

*The Hidi Midden: field illustrations
of small finds by levels*

Nicholas David, University of Calgary

*Note that glass beads are not individually labeled on these figures.
See Figure 34 for labeled beads.*

Scale indicated by millimeter paper background.

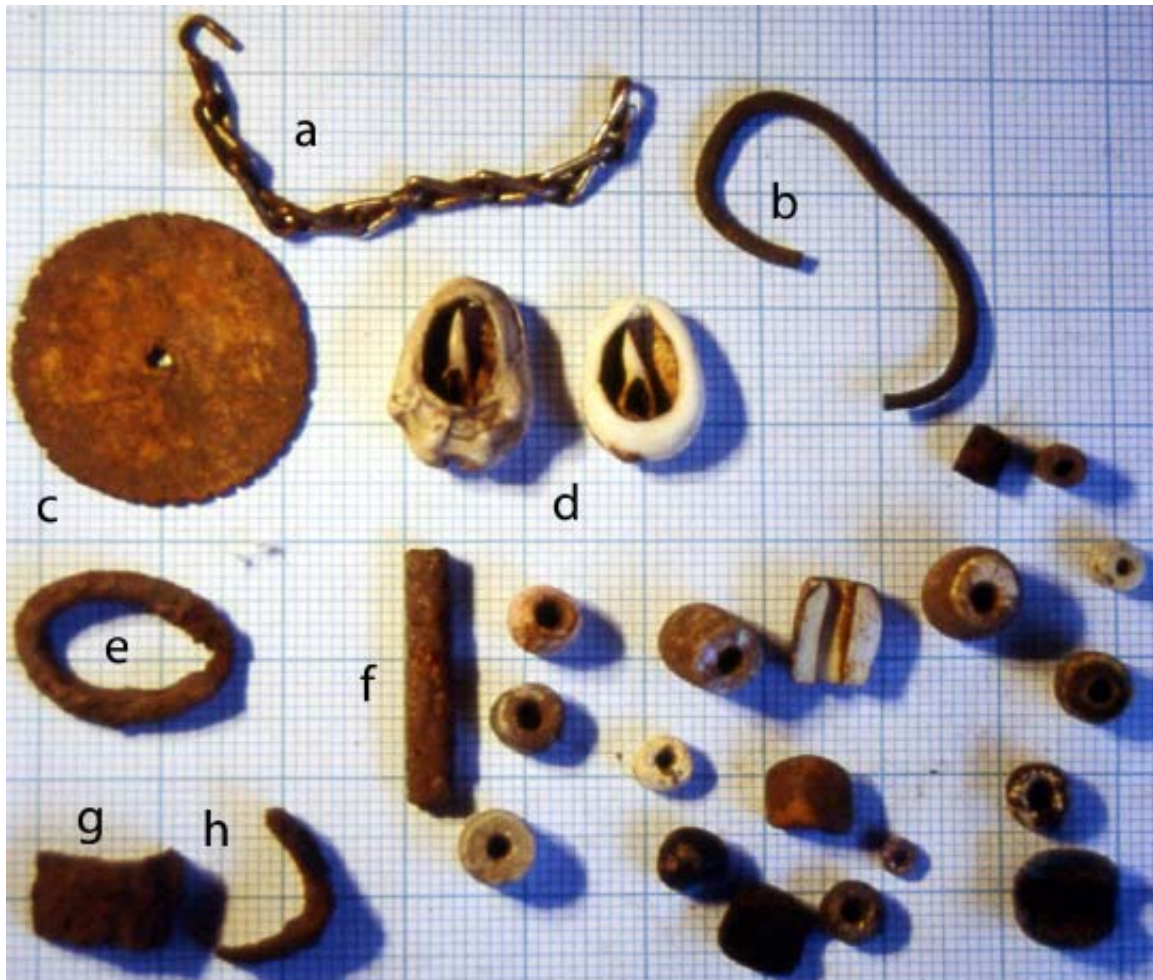


Figure 12. Level 1 selected small finds: a) industrial chain fragment; b) brass wire; c) bone disc; d) cowries; e) iron ring; f) tubular iron bead; g, h) curved iron band fragments.



Figure 13. Level 2 selected small finds: a, b) ceramic ring bead and fragment; c) cowry; d) awl?; e) iron fragment; f) short tubular iron bead; g) iron object, possible costume item; h) iron ring.

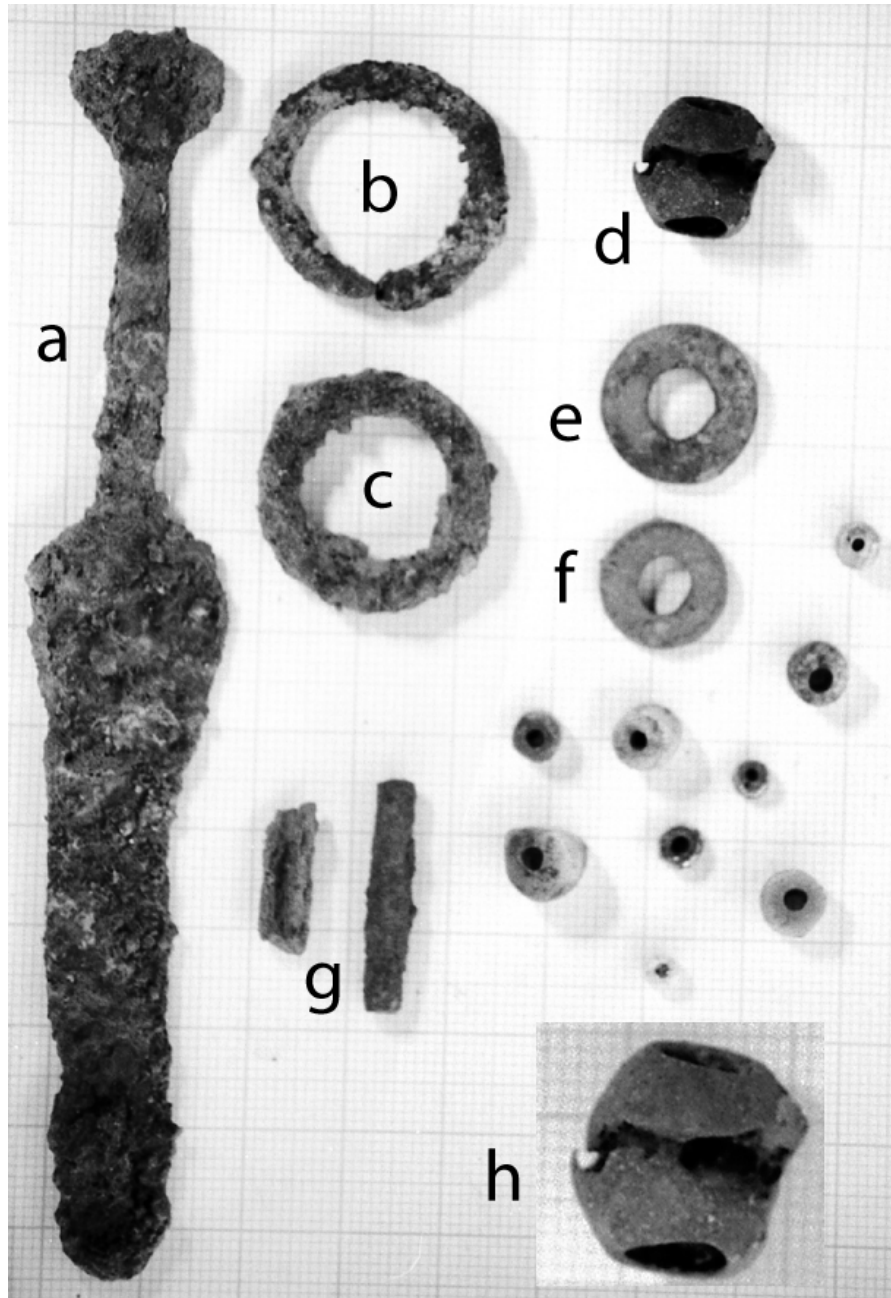


Figure 14. Level 3 selected small finds: a) iron knife; b, c) iron rings; d) damaged brass bead, enlarged in the inset h; e, f) ceramic ring beads; g) tubular iron bead and fragment.

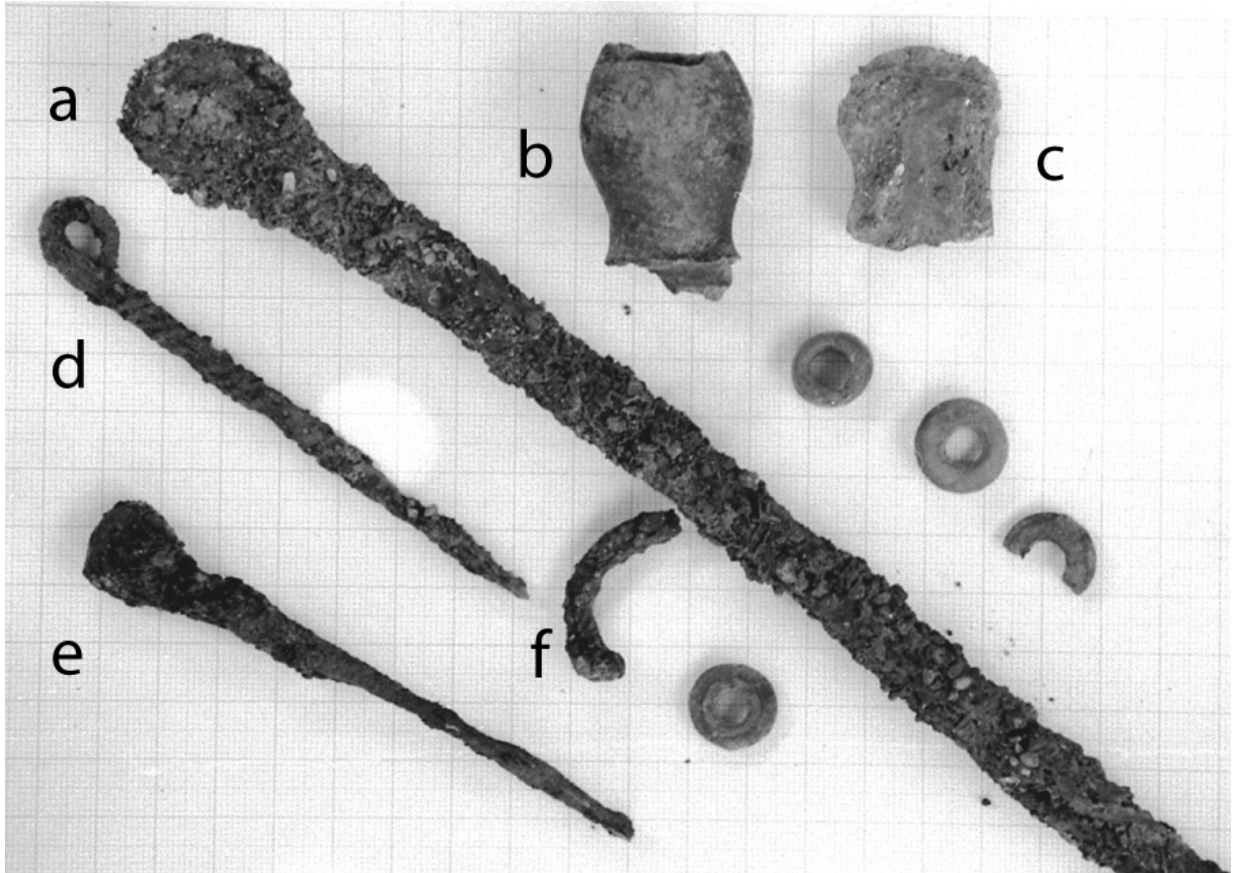


Figure 15. Selected small finds from Level 4 with item a from level 5: a) iron rod with eye, thatching needle?; b, c) fragments of tobacco pips or small flasks; d, e) iron awls; f) child's iron bracelet fragment.



Figure 16. Level 5 selected small finds: a) cowry; b) head of lip pin; c) lip pin; d) iron tool socket; e) iron bracelet.



Figure 17. Level 6 selected small finds: a) iron rod; b) ceramic ring bead; c) ceramic globular bead; d) ceramic carinated bead; e-g) carnelian beads; h-j) iron fragments; k) sub-cylindrical pottery fragment; l) perforated head of ceramic amulet?

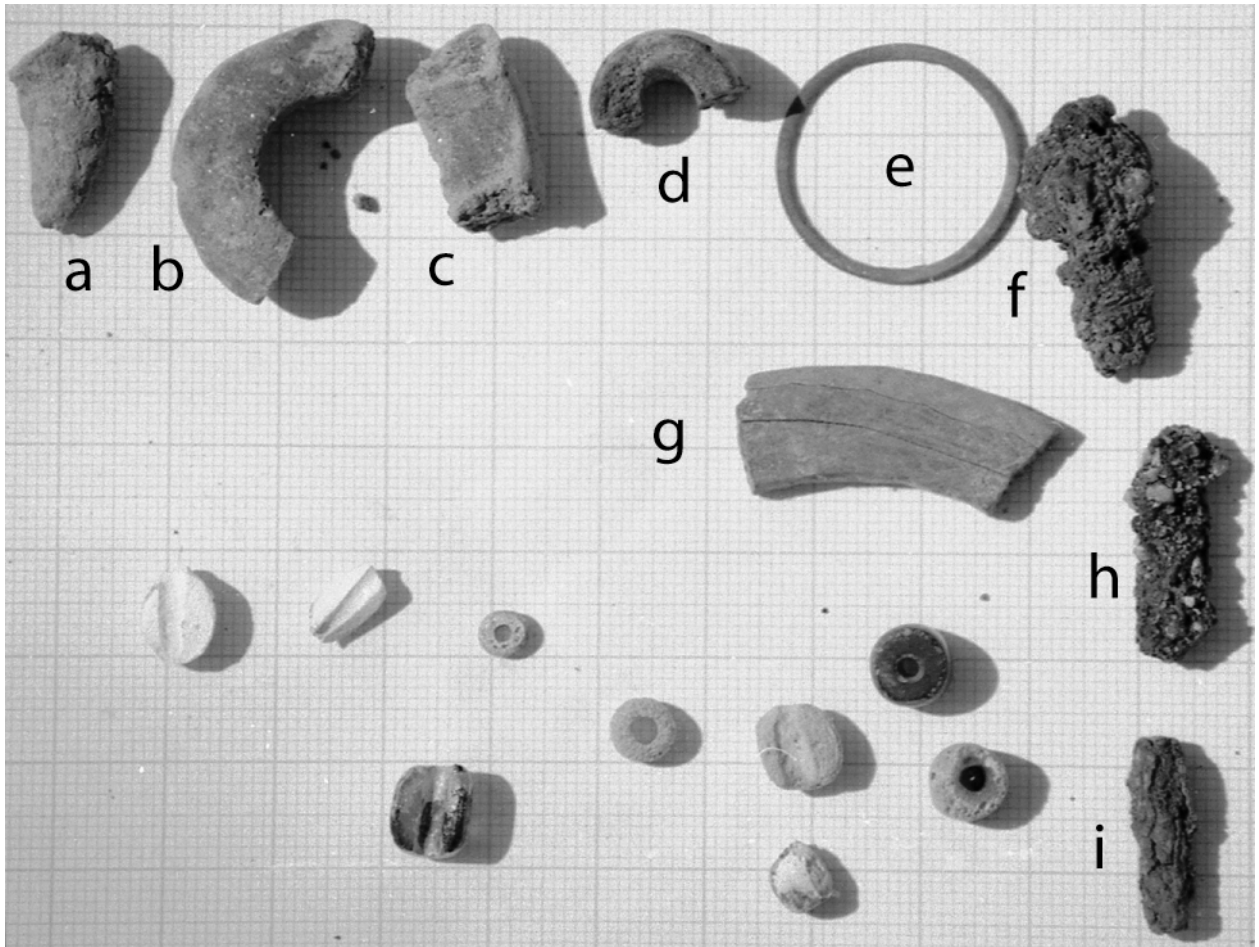


Figure 18. Level 7: selected small finds: a) ceramic appliqué spike?; b-c) ceramic strap handles?; d) unidentified ceramic; e) brass wire ring; f) iron awl head?; g) ivory bangle fragment; h, i) iron fragments.

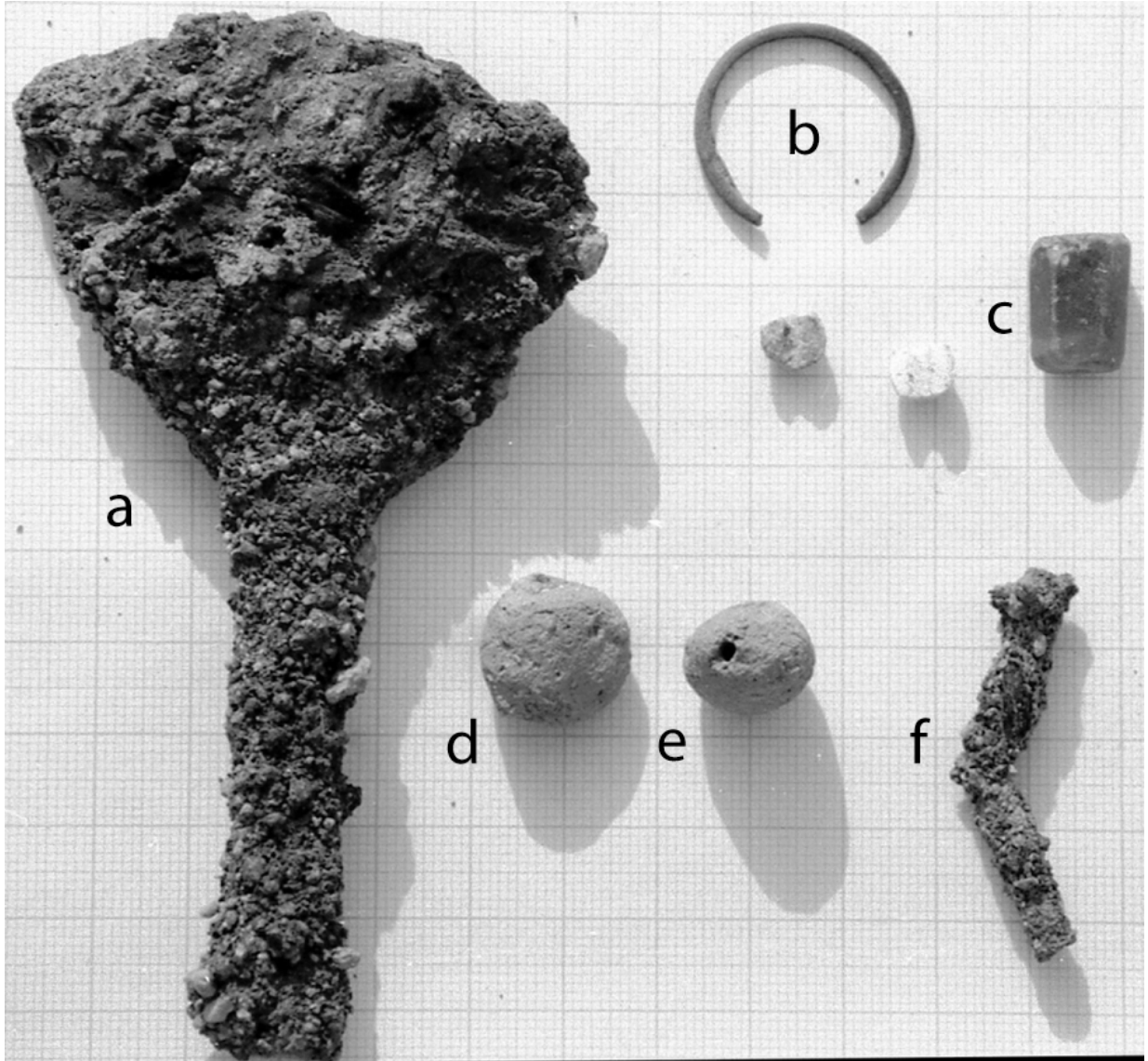


Figure 19. Level 8 selected small finds: a) iron razor; b) brass iron ring fragment; c) carnelian bead; d, e) globular ceramic beads; f) iron fragment.

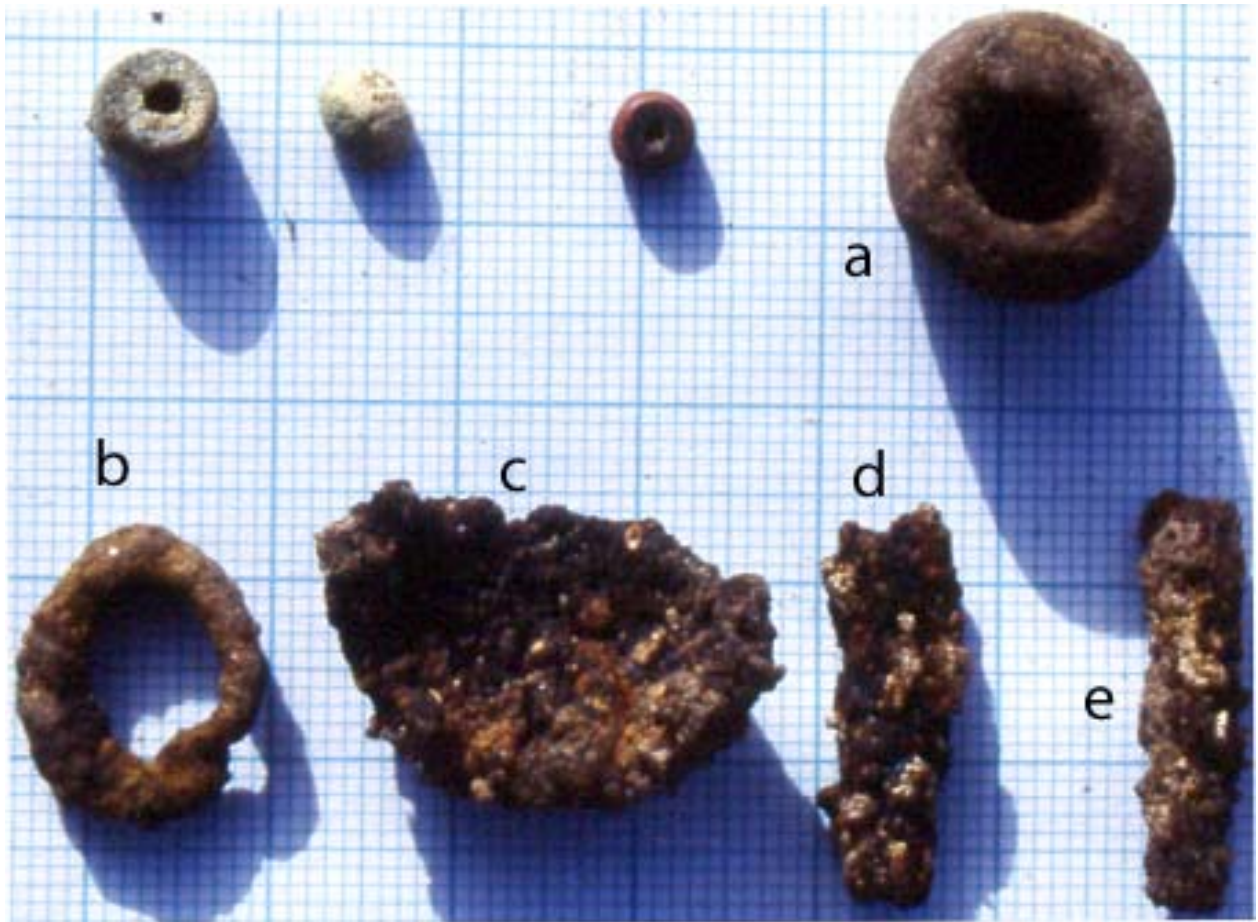


Figure 20. Level 9 selected small finds: a) ceramic ring; b) iron ring; c) flattened iron fragment; d, e) iron fragments.

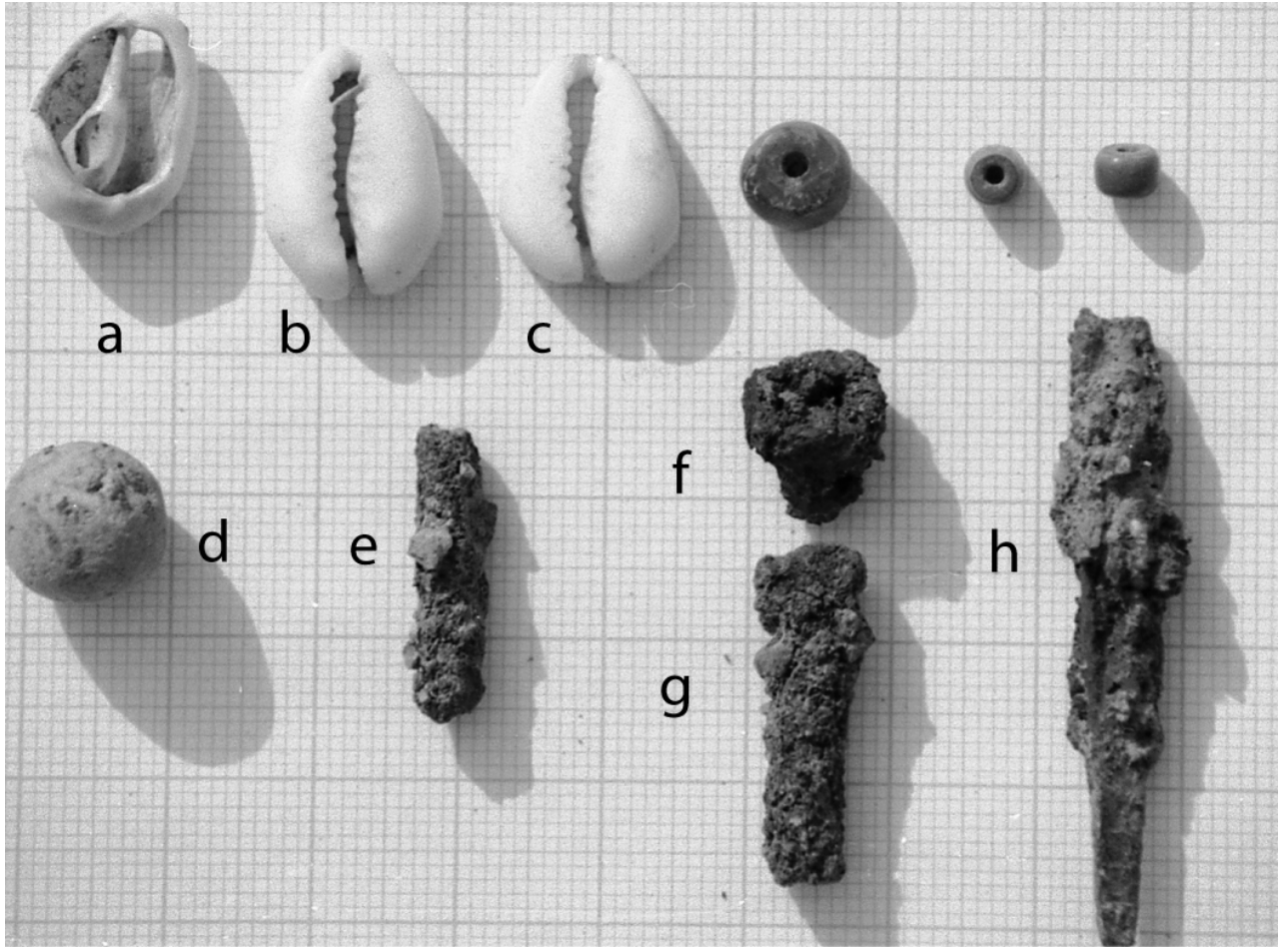


Figure 21. Level 10 selected small finds: a-c) cowries; d) ceramic pellet; e-h) iron fragments.

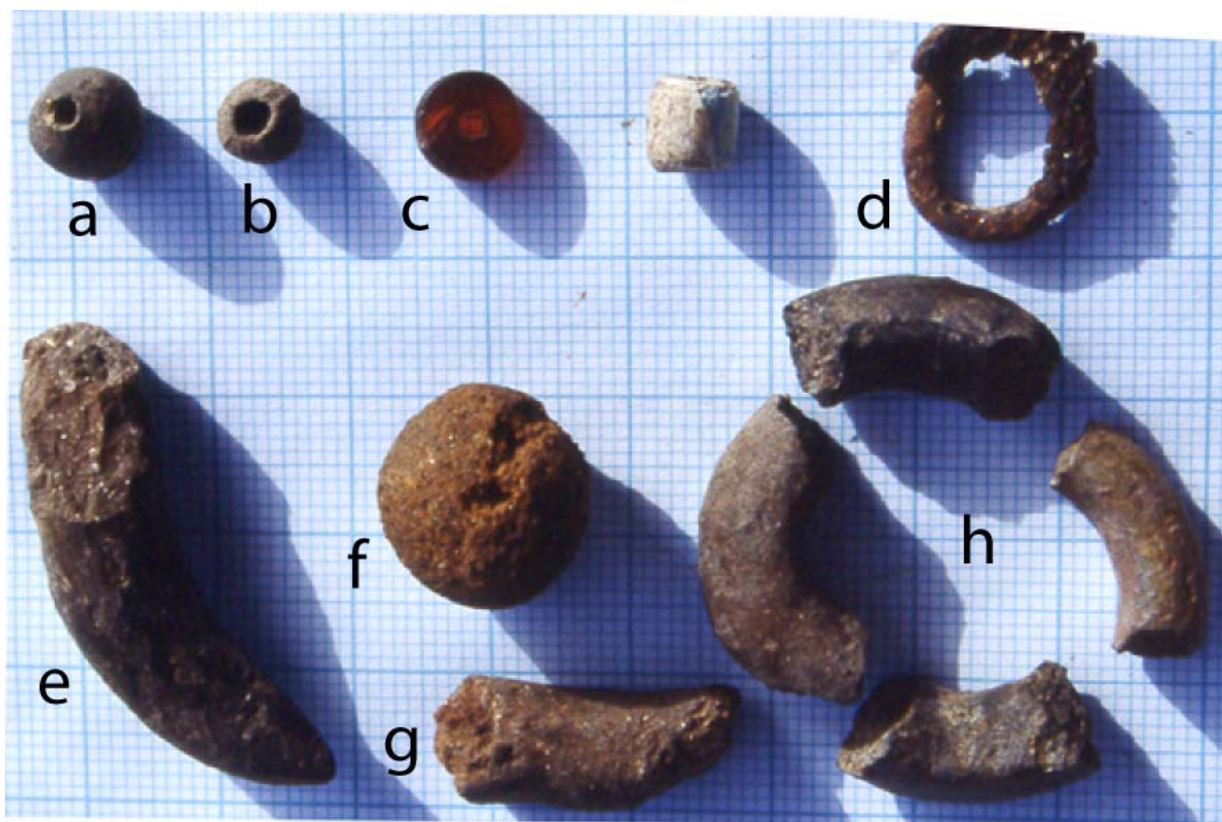


Figure 22. Level 11 selected small finds: a) ceramic bead; b) *Celtis* fruit bead; c) carnelian bead; d) iron ring; e, g) spike pot appliqué; f) ceramic pellet; h) four fragments, 2 black burnished of ceramic rings.

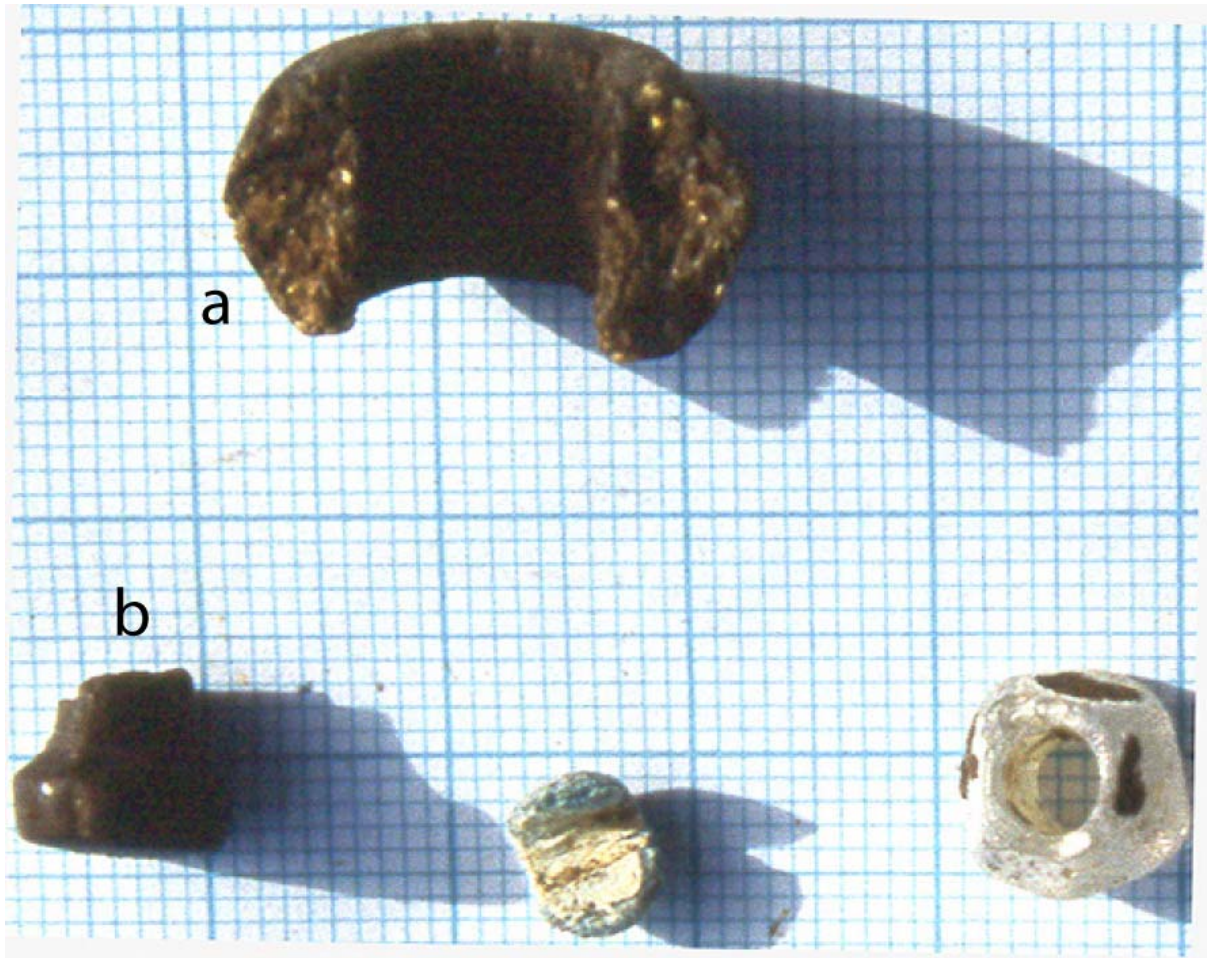


Figure 23. Level 12 selected small finds: a) ceramic ring fragment, carinated; b) bone lip pin head (charred).

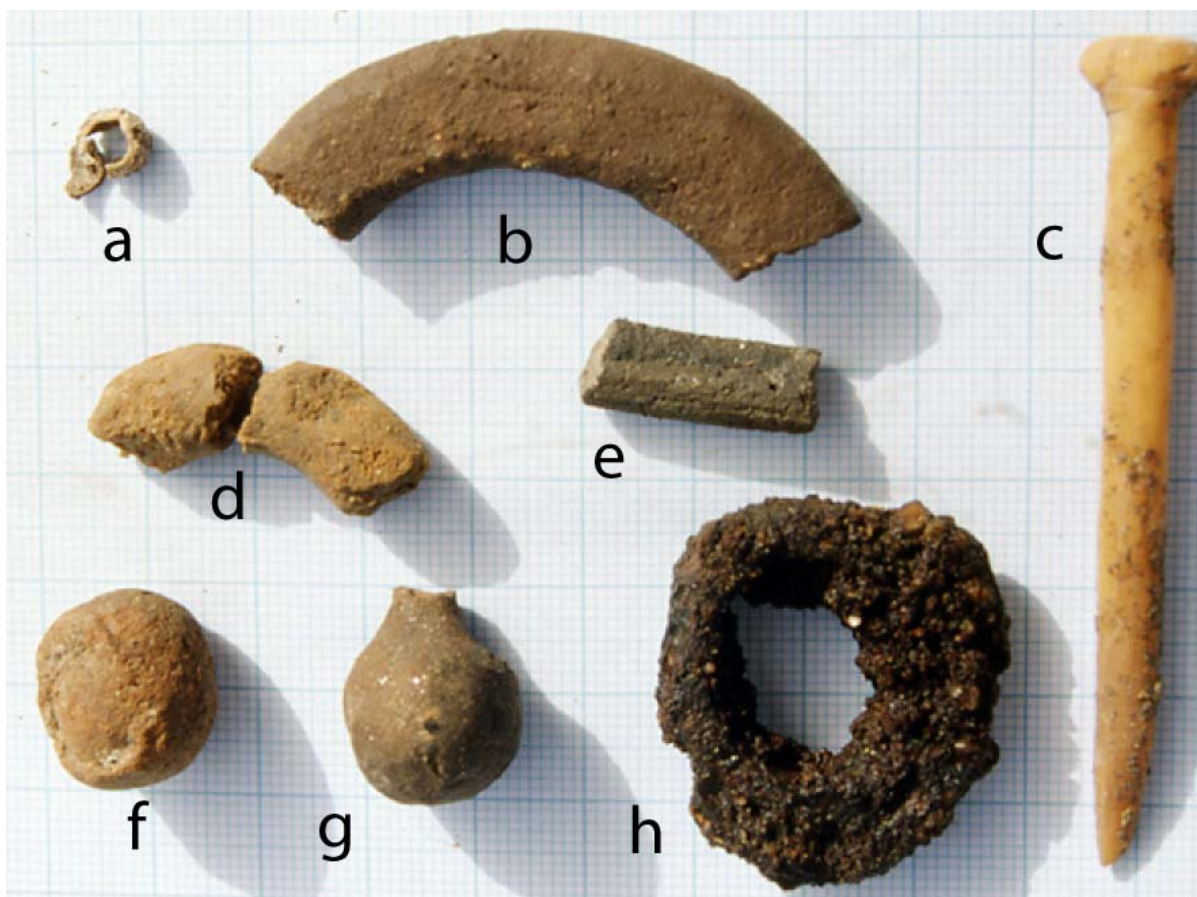


Figure 24. Level 13 selected small finds: a) *Celtis* fruit bead; b, d) ceramic ring fragments; c) bone lip pin; e) ceramic object; f) ceramic pellet; g) ceramic pear-shaped object; h) spirally wound piece, identified as spear butt binding.

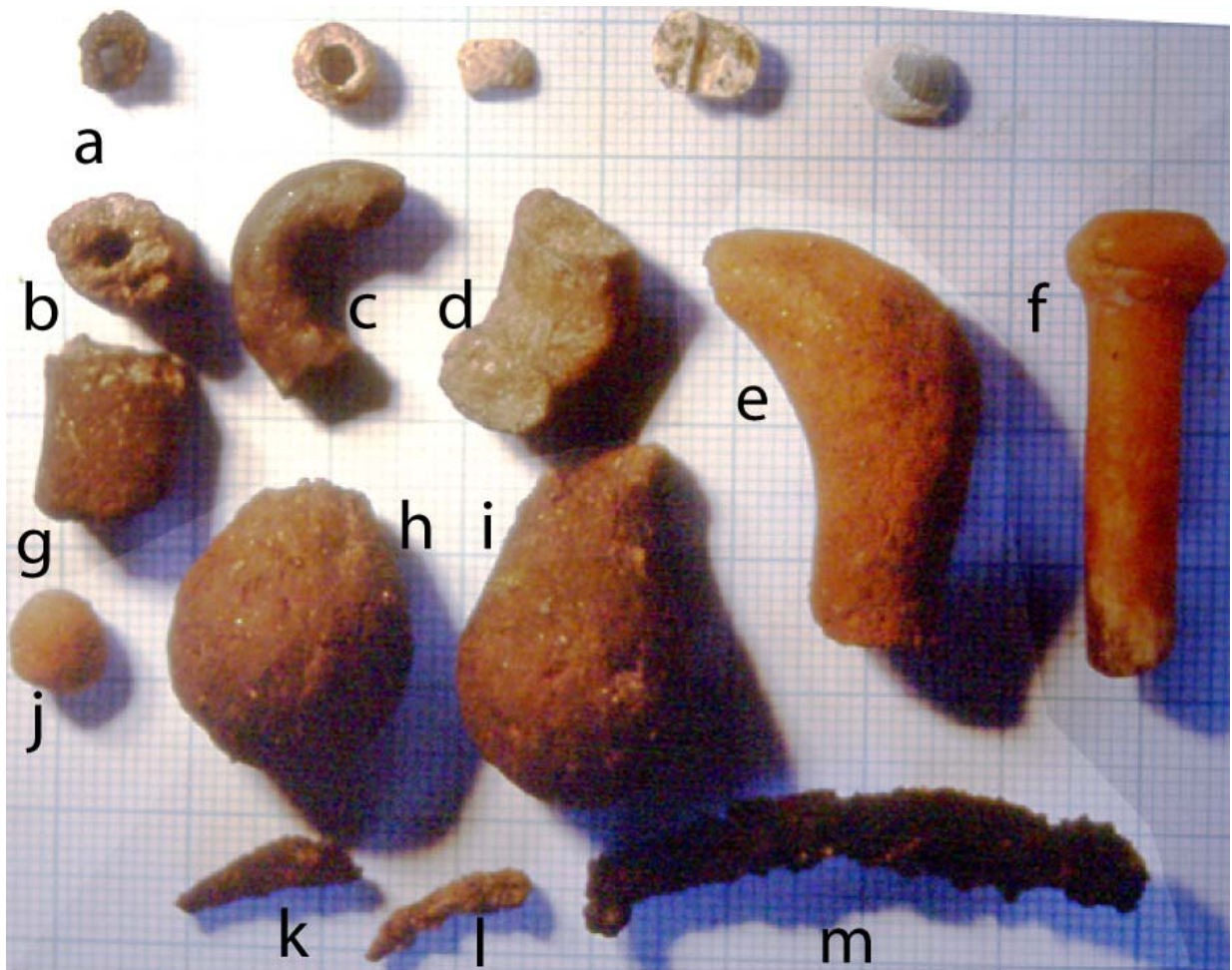


Figure 25. Level 14 selected small finds: a) iron bead; b) crude ceramic bead, damaged; c) ceramic ring fragment d) ceramic bracelet or strap handle fragment; e) ceramic spike appliqué ?; f) bone lip pin fragment; g) sub-cylindrical ceramic fragment; h, i) pear-shaped ceramic objects; j) ceramic pellet; k-m) iron fragments.

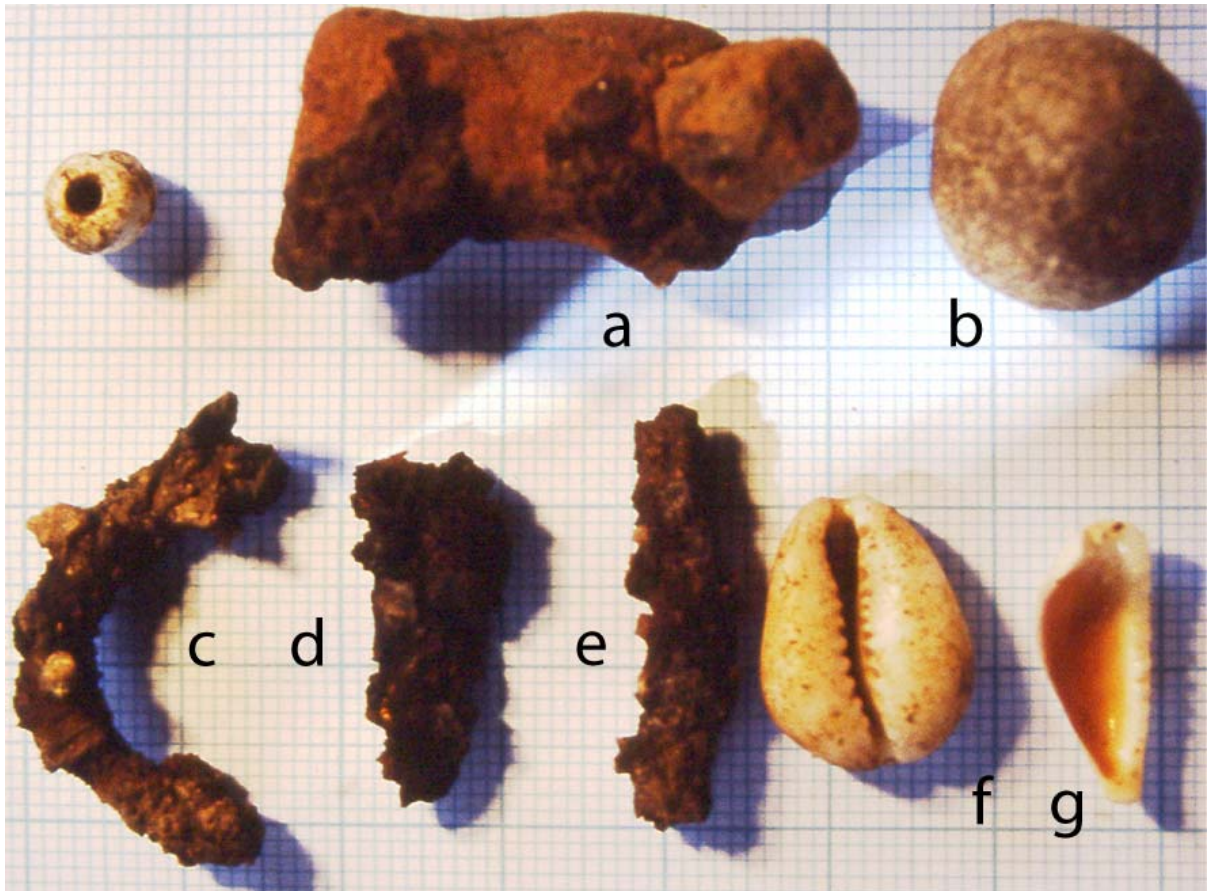


Figure 26. Level 15 selected small finds; a) damaged animal figurine; b) large ceramic pellet; c-e) iron fragments; f, g) cowry and fragment.

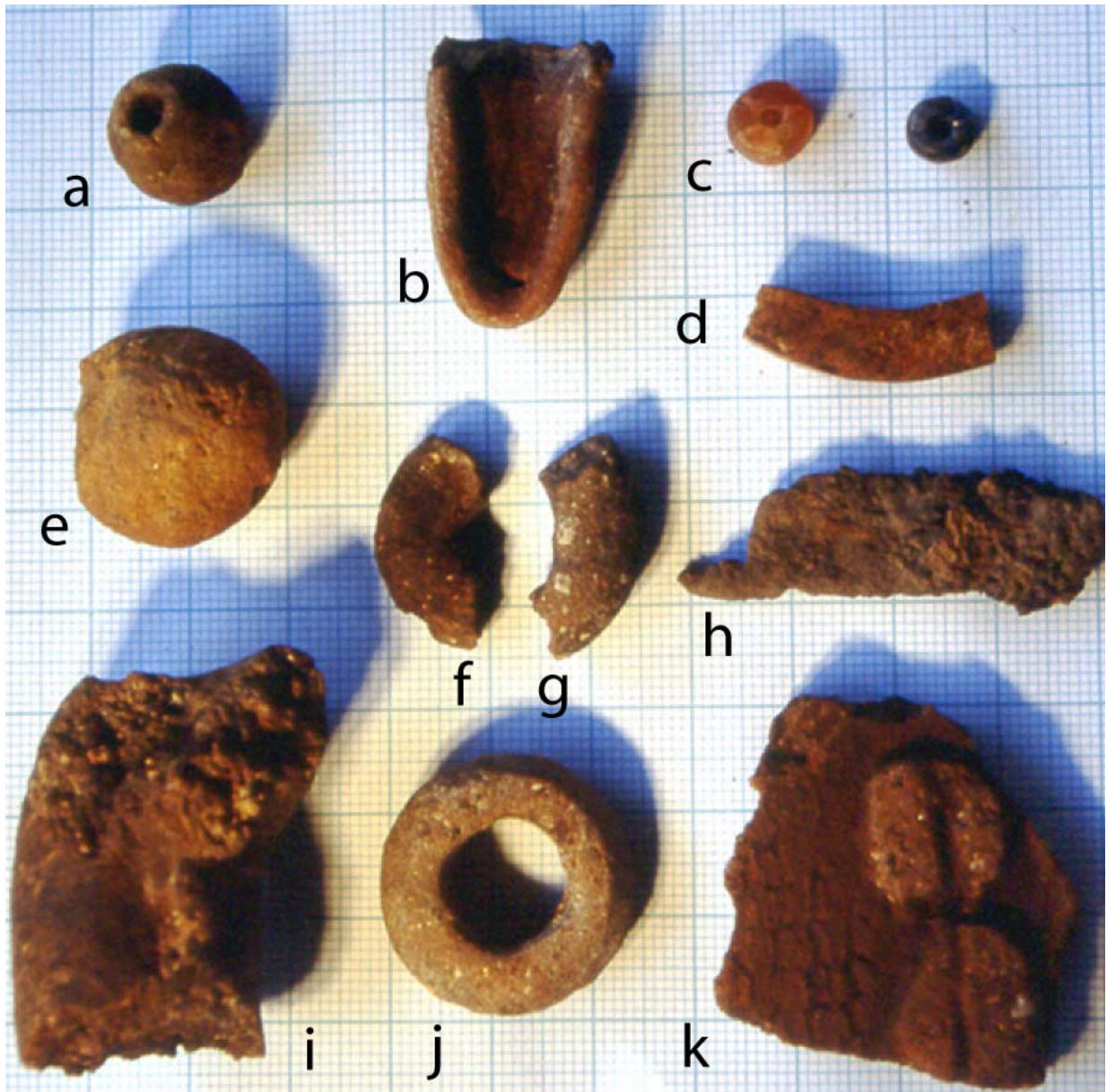


Figure 27. Level 16 selected small finds: a) ceramic pellet with partial perforation; b) ceramic “scoop” fragment; c) carnelian short globular-tubular bead; d) ivory bangle fragment; e) ceramic pellet; f, g) ceramic ring fragments; h) iron knife blade fragment; i) ceramic animal figurine fragment; k) sherd with cowry (?) appliqués.