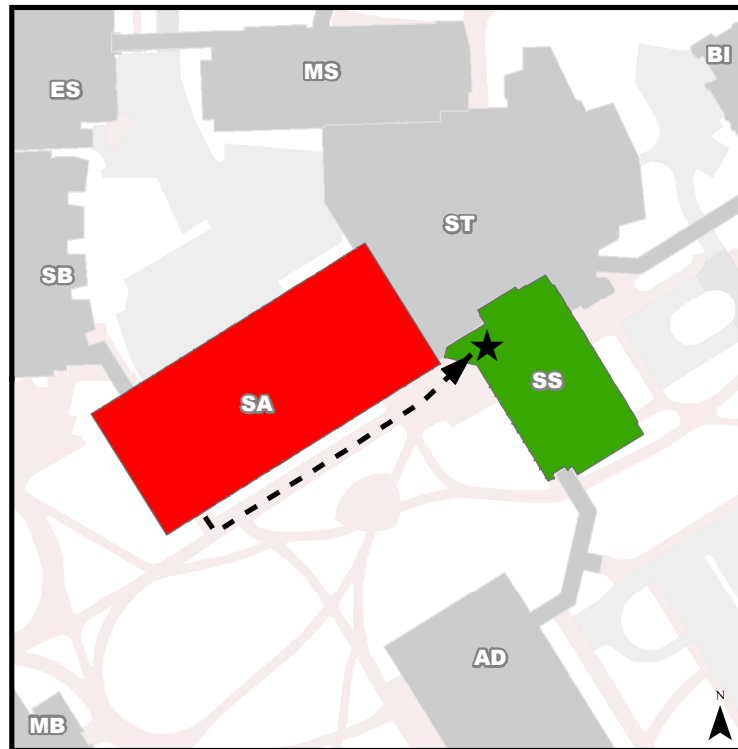


## Emergency Evacuation Procedures

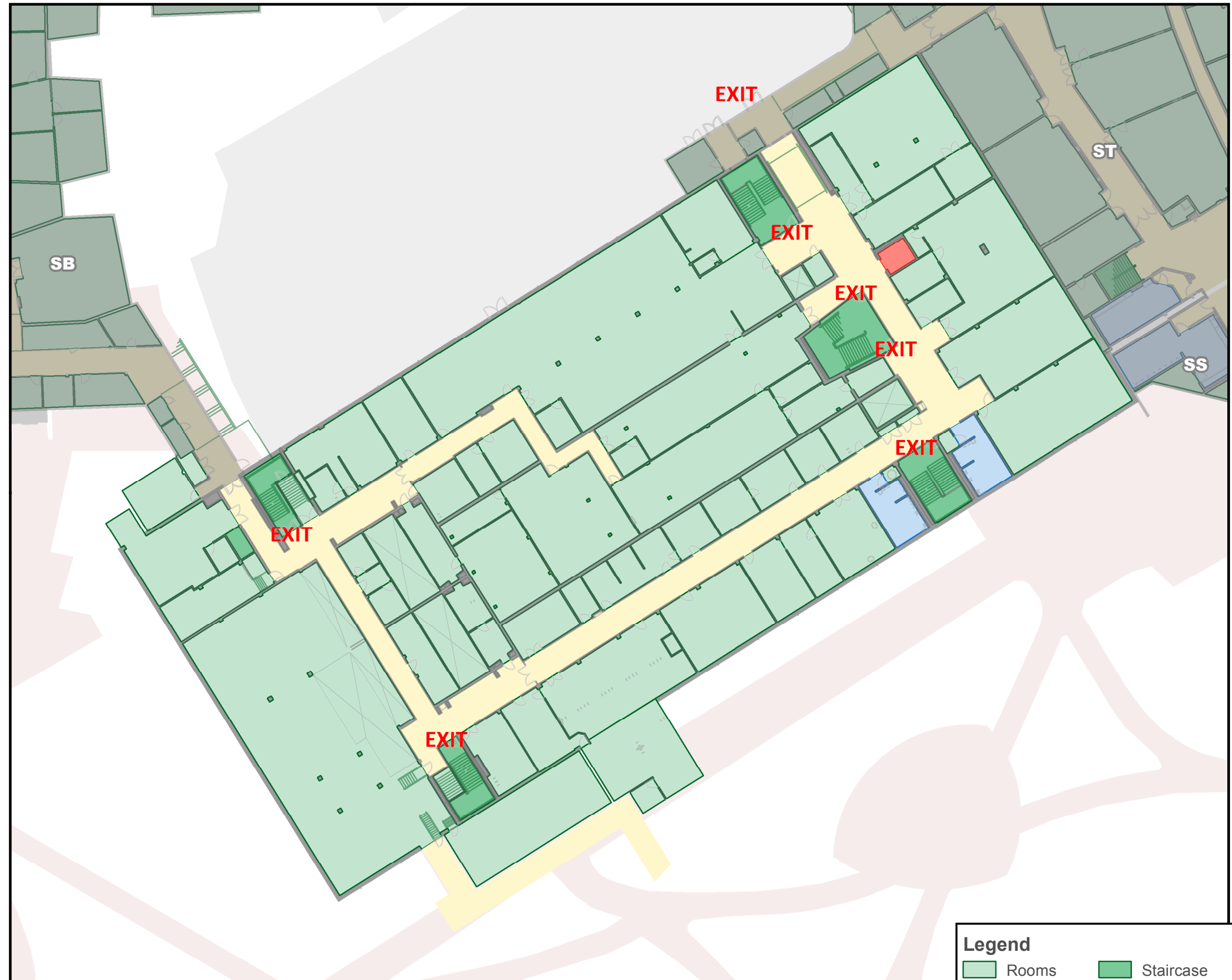
- Activate the **nearest** fire alarm pull station along exit path.
- Take coat and keys if immediately available.
- Evacuate building through the nearest exit. **Use stairs, do not use elevators.**
- Close all doors along your exit route.
- Move away from the building & proceed to Assembly Point

If you have information regarding the emergency call Campus Security at **403-220-5333** from a safe location

## Evacuation Assembly Point Social Science (SS)



- Building You Are In
- Assembly Point (SS: Food Court)



ucmaps@ucalgary.ca  
9/30/2015

### Legend

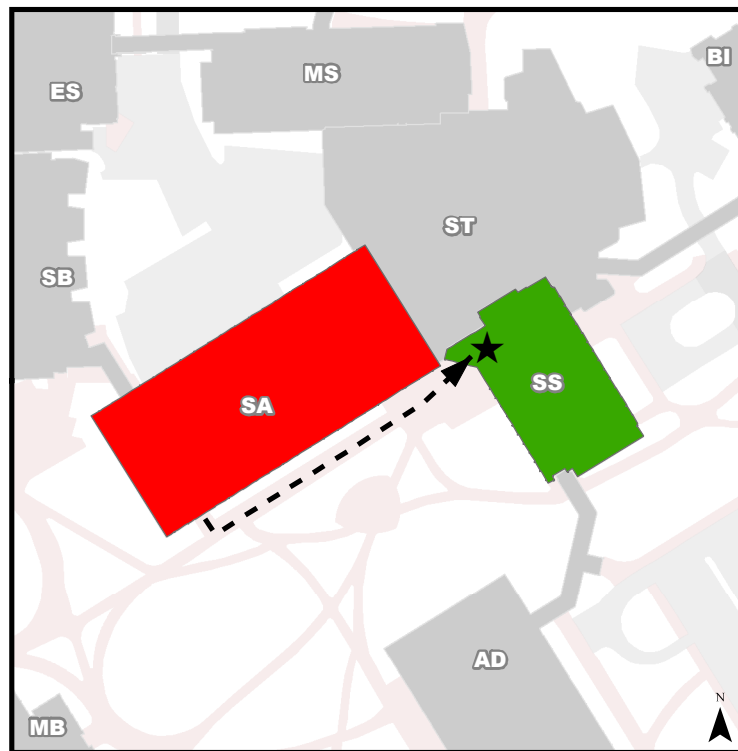
- |   |  |
|---|--|
| <span style="display: inline-block; width: 15px; height: 15px; background-color: lightgreen; border: 1px solid black; margin-right: 5px;"></span> Rooms   | <span style="display: inline-block; width: 15px; height: 15px; background-color: darkgreen; border: 1px solid black; margin-right: 5px;"></span> Staircase |
| <span style="display: inline-block; width: 15px; height: 15px; background-color: lightblue; border: 1px solid black; margin-right: 5px;"></span> Washroom | <span style="display: inline-block; width: 15px; height: 15px; background-color: yellow; border: 1px solid black; margin-right: 5px;"></span> Hallway      |
| <span style="display: inline-block; width: 15px; height: 15px; background-color: red; border: 1px solid black; margin-right: 5px;"></span> Elevator       | <b>You Are Here</b>  |

## Emergency Evacuation Procedures

- A. Activate the **nearest** fire alarm pull station along exit path.
- B. Take coat and keys if immediately available.
- C. Evacuate building through the nearest exit. **Use stairs, do not use elevators.**
- D. Close all doors along your exit route.
- E. Move away from the building & proceed to Assembly Point

If you have information regarding the emergency call Campus Security at **403-220-5333** from a safe location

## Evacuation Assembly Point Social Science (SS)



- Building You Are In
- Assembly Point (SS: Food Court)



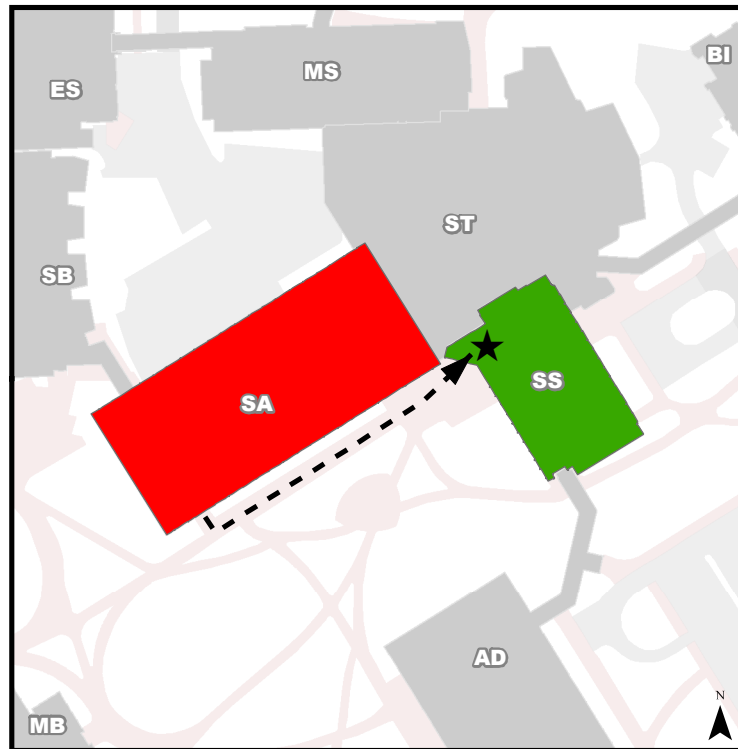
Legend	
<span style="display: inline-block; width: 15px; height: 15px; background-color: lightgreen; border: 1px solid black;"></span> Rooms	<span style="display: inline-block; width: 15px; height: 15px; background-color: darkgreen; border: 1px solid black;"></span> Staircase
<span style="display: inline-block; width: 15px; height: 15px; background-color: lightblue; border: 1px solid black;"></span> Washroom	<span style="display: inline-block; width: 15px; height: 15px; background-color: yellow; border: 1px solid black;"></span> Hallway
<span style="display: inline-block; width: 15px; height: 15px; background-color: red; border: 1px solid black;"></span> Elevator	<b>You Are Here</b>

## Emergency Evacuation Procedures

- A. Activate the **nearest** fire alarm pull station along exit path.
- B. Take coat and keys if immediately available.
- C. Evacuate building through the nearest exit. **Use stairs, do not use elevators.**
- D. Close all doors along your exit route.
- E. Move away from the building & proceed to Assembly Point

If you have information regarding the emergency call Campus Security at **403-220-5333** from a safe location

## Evacuation Assembly Point Social Science (SS)



- Building You Are In
- Assembly Point (SS: Food Court)



### Legend

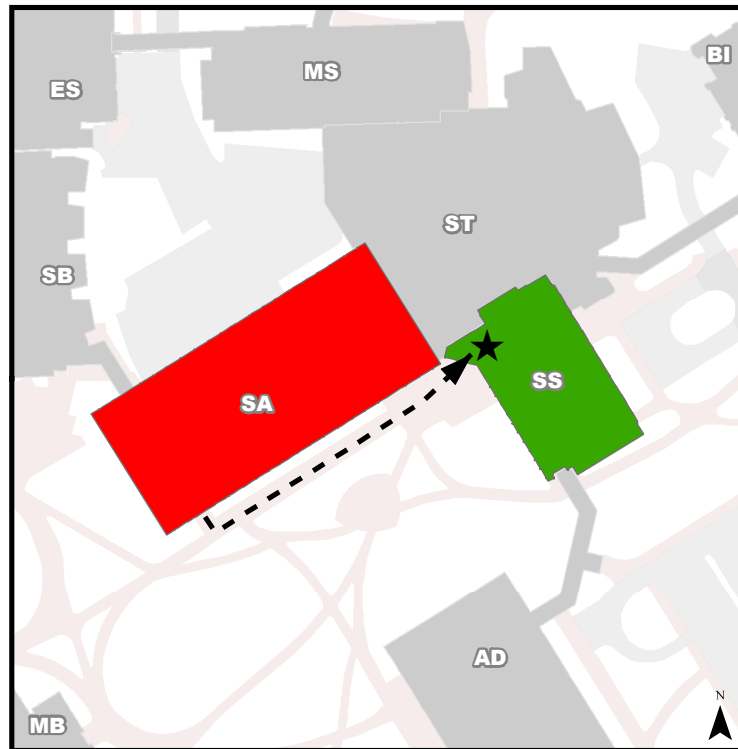
- |  |   |
|--|---|
| <span style="display: inline-block; width: 15px; height: 15px; background-color: lightgreen; border: 1px solid black;"></span> Rooms   | <span style="display: inline-block; width: 15px; height: 15px; background-color: darkgreen; border: 1px solid black;"></span> Staircase |
| <span style="display: inline-block; width: 15px; height: 15px; background-color: lightblue; border: 1px solid black;"></span> Washroom | <span style="display: inline-block; width: 15px; height: 15px; background-color: yellow; border: 1px solid black;"></span> Hallway      |
| <span style="display: inline-block; width: 15px; height: 15px; background-color: red; border: 1px solid black;"></span> Elevator       | <span style="color: red;">You Are Here</span>   |

## Emergency Evacuation Procedures

- A. Activate the **nearest** fire alarm pull station along exit path.
- B. Take coat and keys if immediately available.
- C. Evacuate building through the nearest exit. **Use stairs, do not use elevators.**
- D. Close all doors along your exit route.
- E. Move away from the building & proceed to Assembly Point

If you have information regarding the emergency call Campus Security at **403-220-5333** from a safe location

## Evacuation Assembly Point Social Science (SS)



- Building You Are In
- Assembly Point (SS: Food Court)



### Legend

- |   |  |
|---|--|
| <span style="display: inline-block; width: 15px; height: 15px; background-color: lightgreen; border: 1px solid black; margin-right: 5px;"></span> Rooms   | <span style="display: inline-block; width: 15px; height: 15px; background-color: darkgreen; border: 1px solid black; margin-right: 5px;"></span> Staircase |
| <span style="display: inline-block; width: 15px; height: 15px; background-color: lightblue; border: 1px solid black; margin-right: 5px;"></span> Washroom | <span style="display: inline-block; width: 15px; height: 15px; background-color: yellow; border: 1px solid black; margin-right: 5px;"></span> Hallway      |
| <span style="display: inline-block; width: 15px; height: 15px; background-color: red; border: 1px solid black; margin-right: 5px;"></span> Elevator       | <b>You Are Here</b>  |