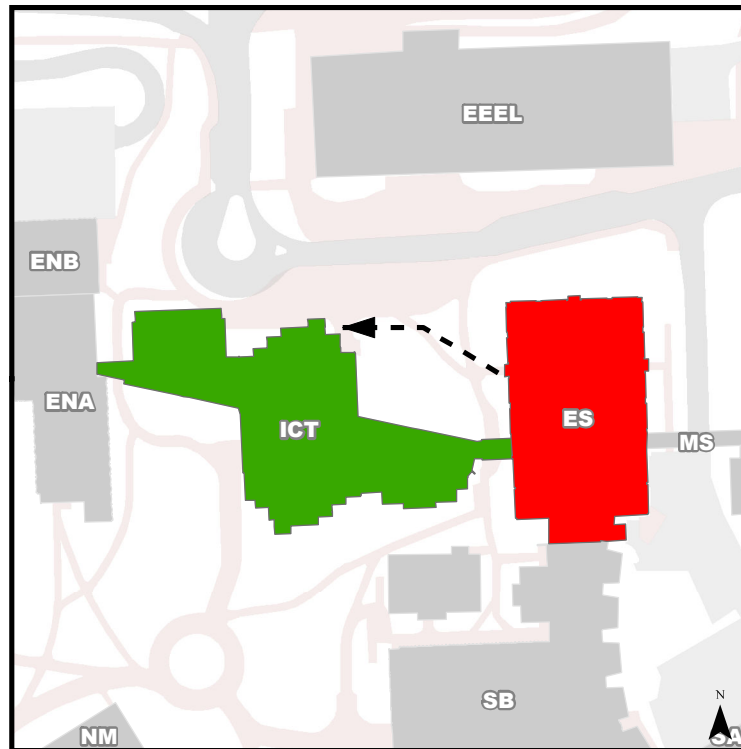


Emergency Evacuation Procedures

- Activate the **nearest** fire alarm pull station along exit path.
- Take coat and keys if immediately available.
- Evacuate building through the nearest exit. **Use stairs, do not use elevators.**
- Close all doors along your exit route.
- Move away from the building & proceed to Assembly Point

If you have information regarding the emergency call Campus Security at
403-220-5333 from a safe location

Evacuation Assembly Point Information & Communications Technologies (ICT)



- Building You Are In
- Assembly Point During an Emergency

Earth Science (ES)

Floor: 01



ucmaps@ucalgary.ca
Dec 18, 2012

Legend

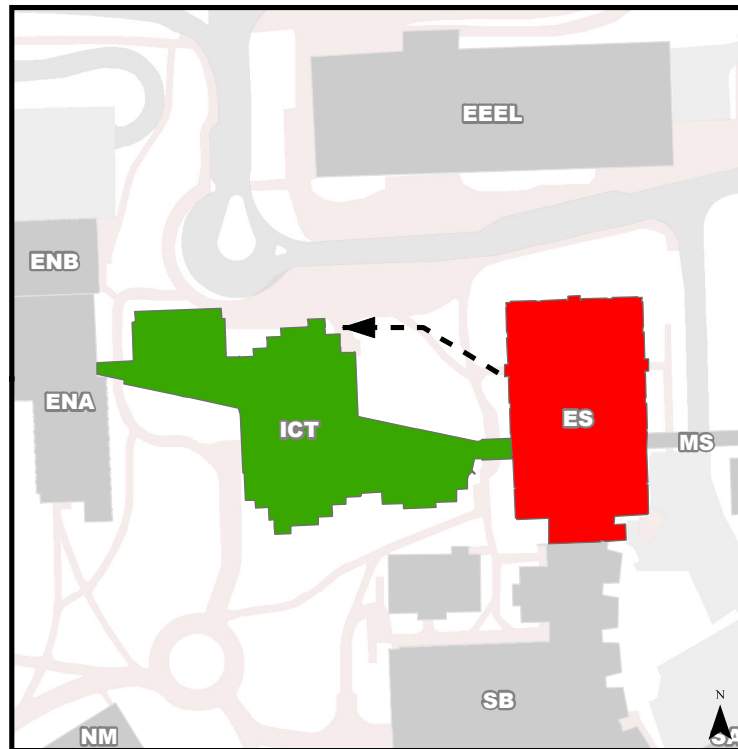
- | | |
|--|--|
| Rooms | Staircases |
| Washrooms | Hallways |
| Elevators | You Are Here |

Emergency Evacuation Procedures

- Activate the **nearest** fire alarm pull station along exit path.
- Take coat and keys if immediately available.
- Evacuate building through the nearest exit. **Use stairs, do not use elevators.**
- Close all doors along your exit route.
- Move away from the building & proceed to Assembly Point

If you have information regarding the emergency call Campus Security at **403-220-5333** from a safe location

Evacuation Assembly Point Information & Communications Technologies (ICT)



- Building You Are In
- Assembly Point During an Emergency

Earth Science (ES)

Floor: 02



ucmaps@ucalgary.ca
Dec 18, 2012

Legend

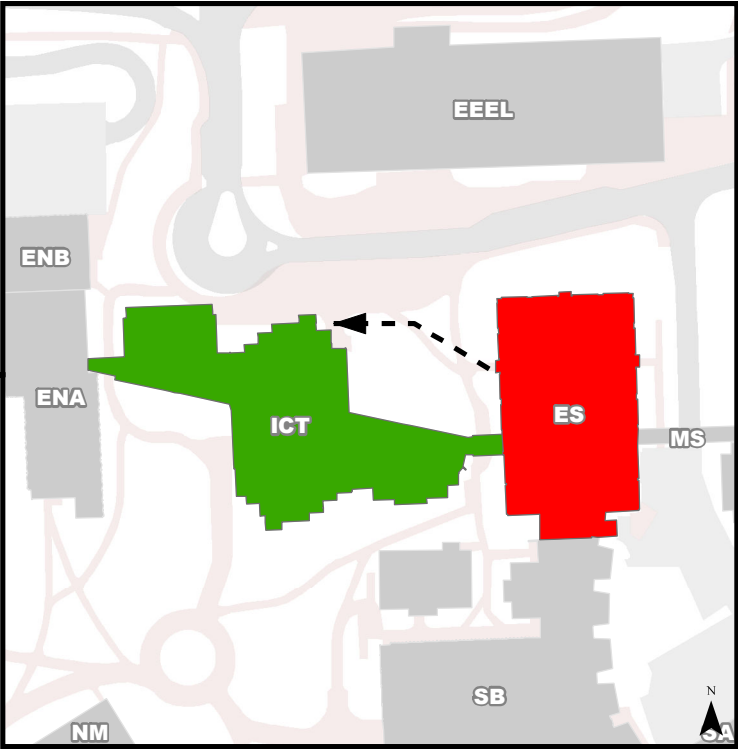
- | | |
|--|--|
| Rooms | Staircases |
| Washrooms | Hallways |
| Elevators | You Are Here |

Emergency Evacuation Procedures

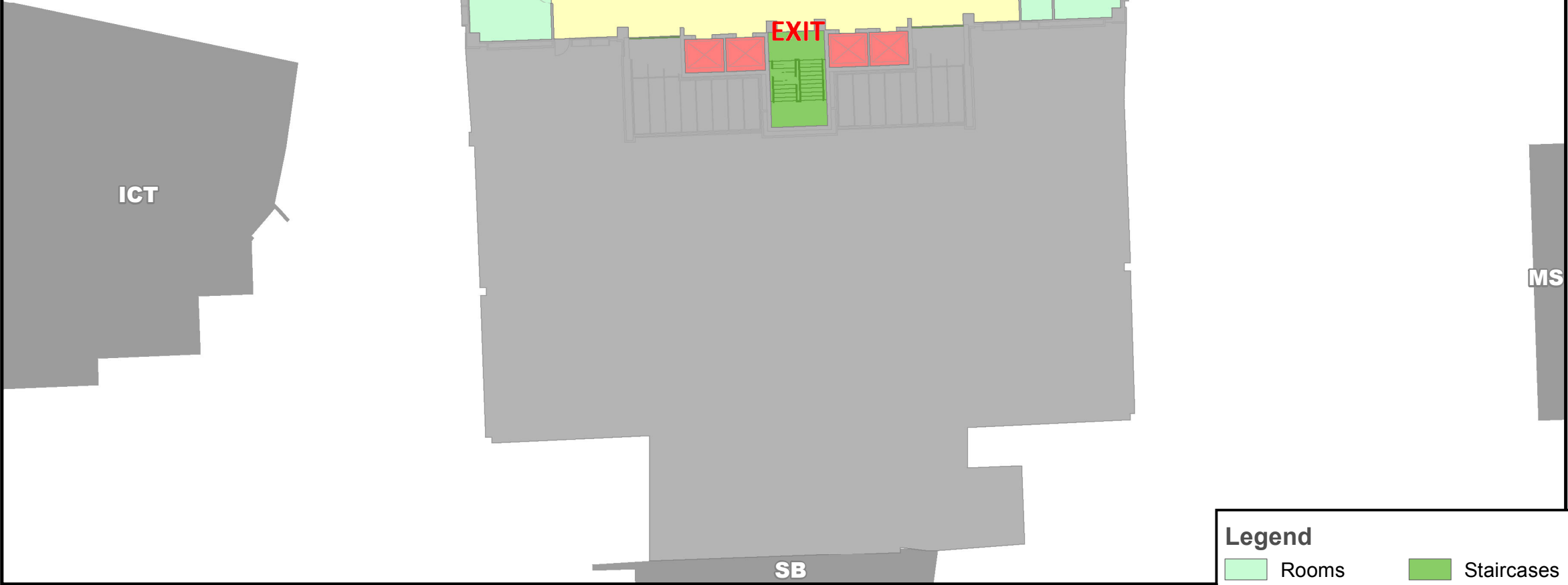
- Activate the **nearest** fire alarm pull station along exit path.
- Take coat and keys if immediately available.
- Evacuate building through the nearest exit. **Use stairs, do not use elevators.**
- Close all doors along your exit route.
- Move away from the building & proceed to Assembly Point

If you have information regarding the emergency call Campus Security at **403-220-5333** from a safe location

Evacuation Assembly Point Information & Communications Technologies (ICT)



- Building You Are In
- Assembly Point During an Emergency



Legend

■ Rooms

■ Washrooms

■ Elevators

■ Staircases

■ Hallways

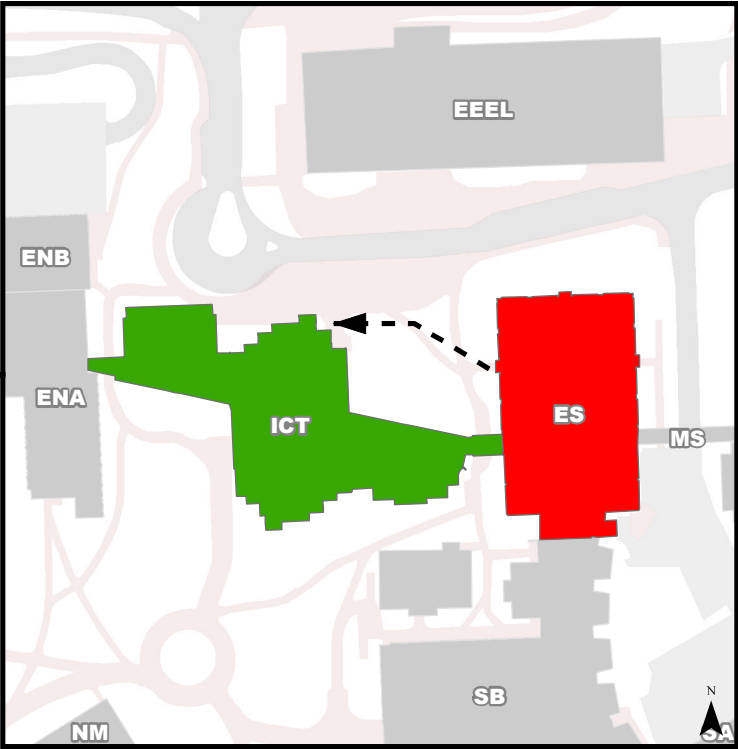
You Are Here

Emergency Evacuation Procedures

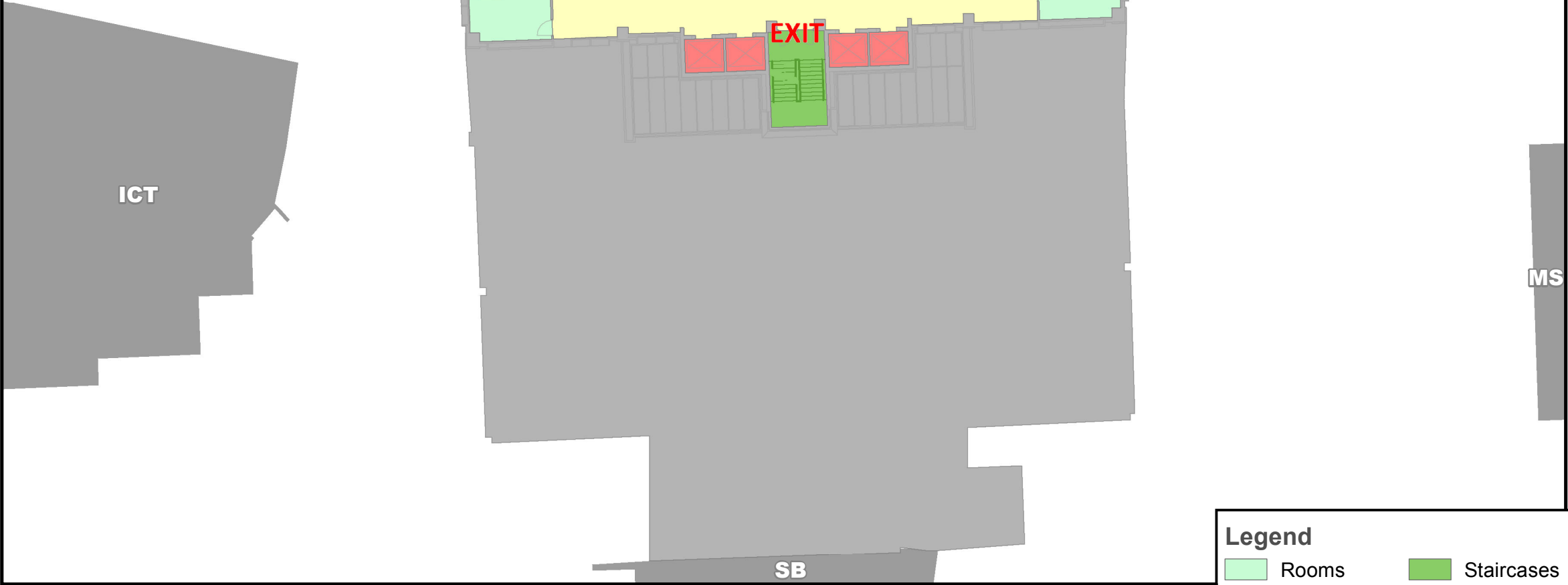
- Activate the **nearest** fire alarm pull station along exit path.
- Take coat and keys if immediately available.
- Evacuate building through the nearest exit. **Use stairs, do not use elevators.**
- Close all doors along your exit route.
- Move away from the building & proceed to Assembly Point

If you have information regarding the emergency call Campus Security at **403-220-5333** from a safe location

Evacuation Assembly Point Information & Communications Technologies (ICT)



- Building You Are In
- Assembly Point During an Emergency



Legend

Rooms

Washrooms

Elevators

Staircases

Hallways

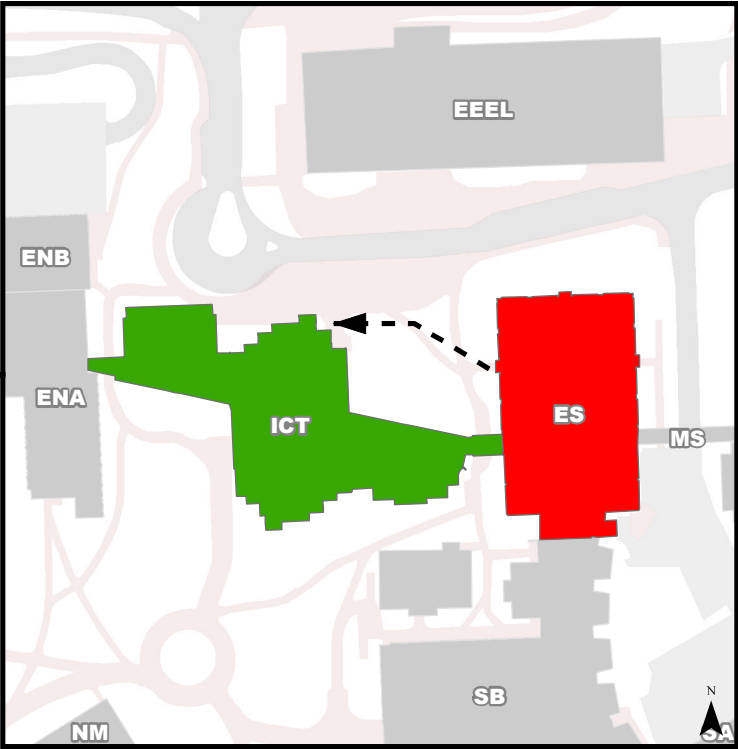
You Are Here

Emergency Evacuation Procedures

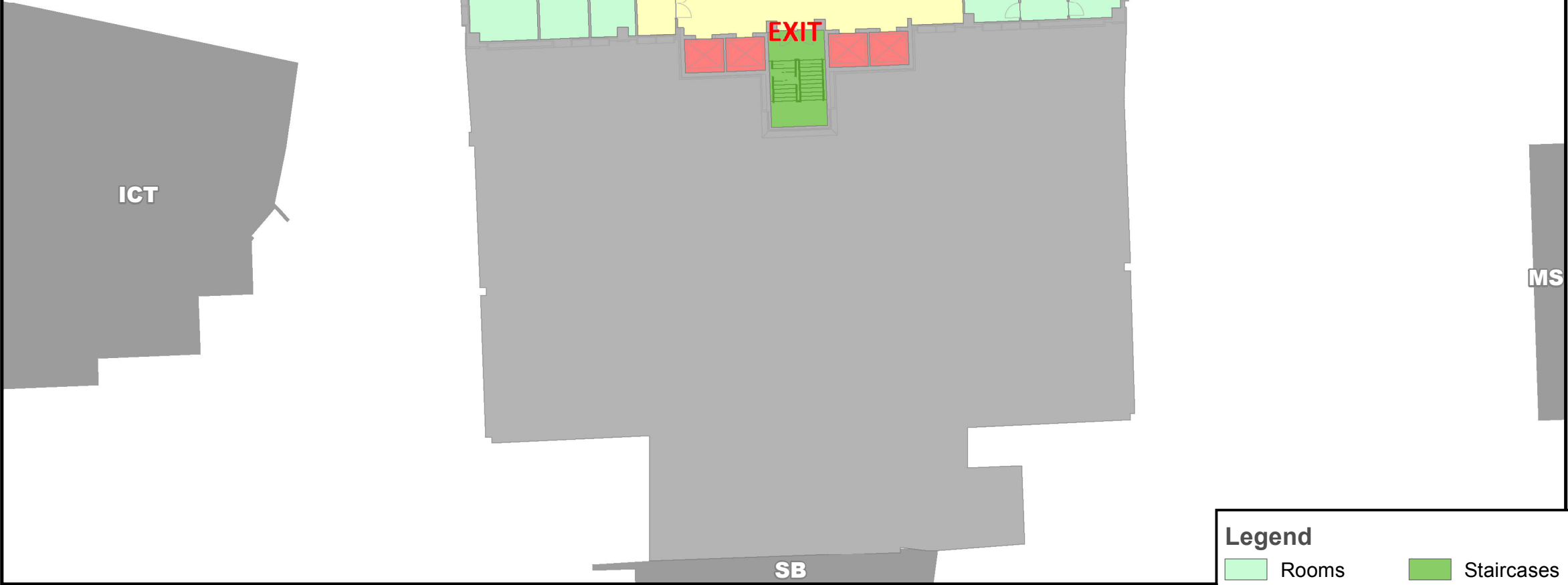
- Activate the **nearest** fire alarm pull station along exit path.
- Take coat and keys if immediately available.
- Evacuate building through the nearest exit. **Use stairs, do not use elevators.**
- Close all doors along your exit route.
- Move away from the building & proceed to Assembly Point

If you have information regarding the emergency call Campus Security at
403-220-5333 from a safe location

Evacuation Assembly Point Information & Communications Technologies (ICT)



- Building You Are In
- Assembly Point During an Emergency



Legend

■ Rooms

■ Washrooms

■ Elevators

■ Staircases

■ Hallways

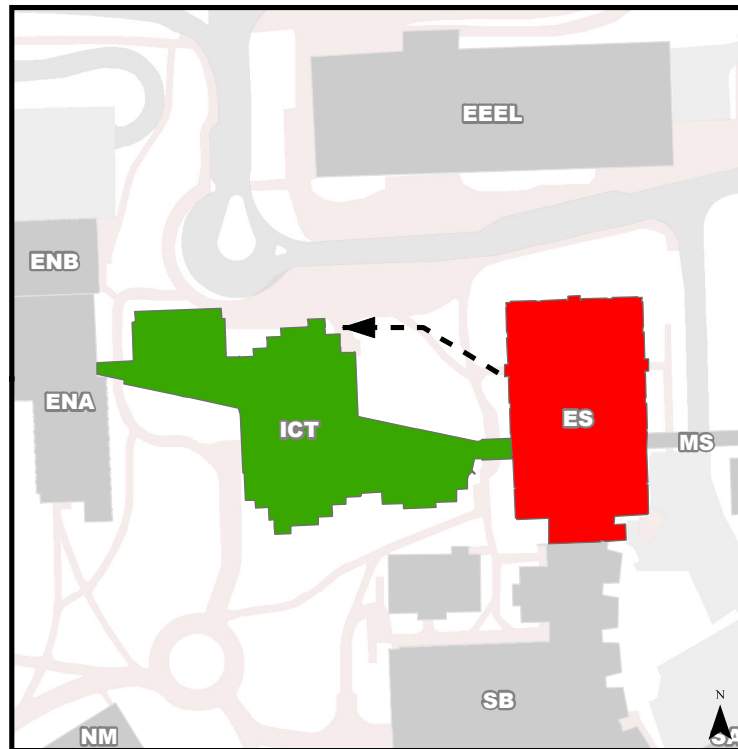
You Are Here

Emergency Evacuation Procedures

- Activate the **nearest** fire alarm pull station along exit path.
- Take coat and keys if immediately available.
- Evacuate building through the nearest exit. **Use stairs, do not use elevators.**
- Close all doors along your exit route.
- Move away from the building & proceed to Assembly Point

If you have information regarding the emergency call Campus Security at
403-220-5333 from a safe location

Evacuation Assembly Point Information & Communications Technologies (ICT)



- Building You Are In
- Assembly Point During an Emergency

Earth Science (ES)

Floor: 06



ucmaps@ucalgary.ca
Dec 18, 2012

Legend

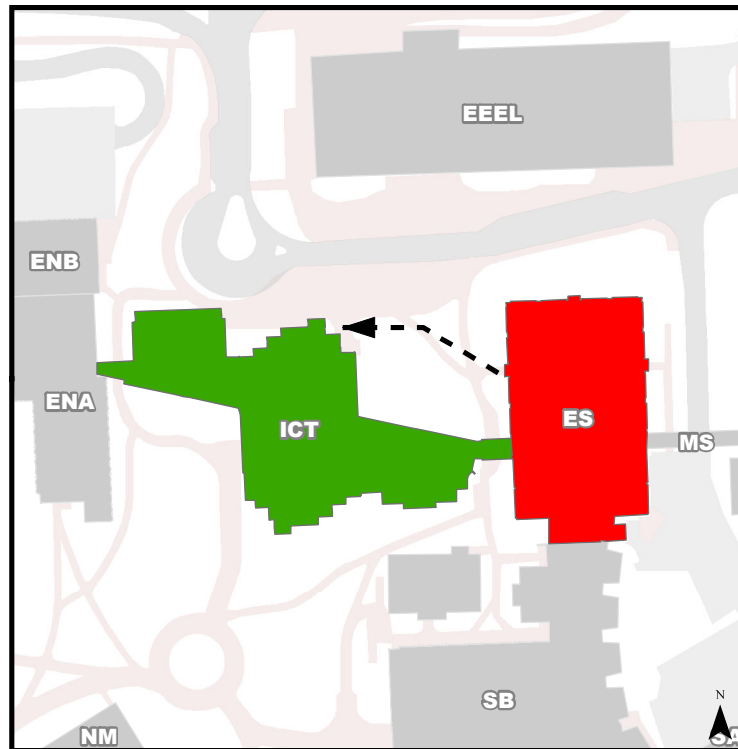
- | | |
|--|--|
| Rooms | Staircases |
| Washrooms | Hallways |
| Elevators | You Are Here |

Emergency Evacuation Procedures

- Activate the **nearest** fire alarm pull station along exit path.
- Take coat and keys if immediately available.
- Evacuate building through the nearest exit. **Use stairs, do not use elevators.**
- Close all doors along your exit route.
- Move away from the building & proceed to Assembly Point

If you have information regarding the emergency call Campus Security at
403-220-5333 from a safe location

Evacuation Assembly Point Information & Communications Technologies (ICT)



- Building You Are In
- Assembly Point During an Emergency

Earth Science (ES)

Floor: 07



ucmaps@ucalgary.ca
Dec 18, 2012

Legend

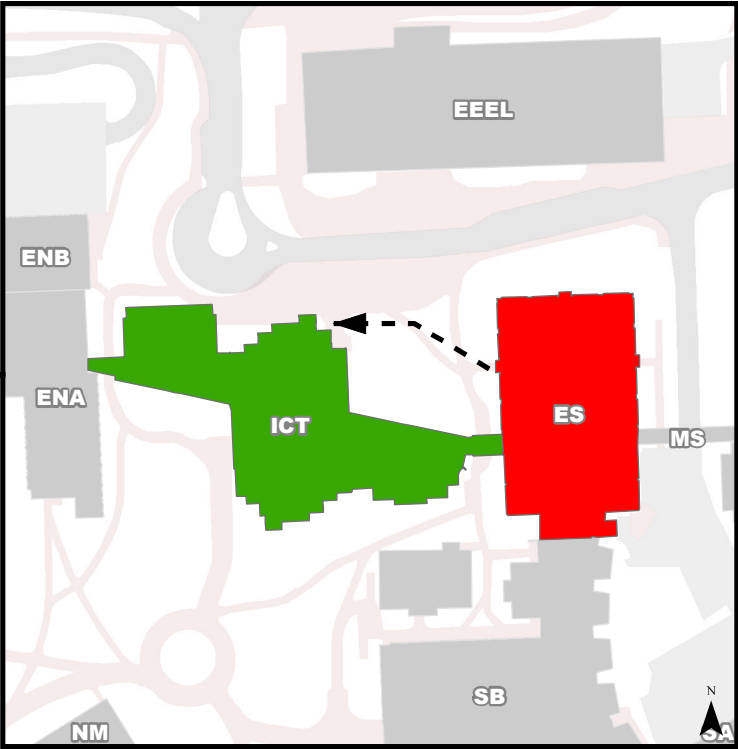
- | | |
|--|--|
| Rooms | Staircases |
| Washrooms | Hallways |
| Elevators | You Are Here |

Emergency Evacuation Procedures

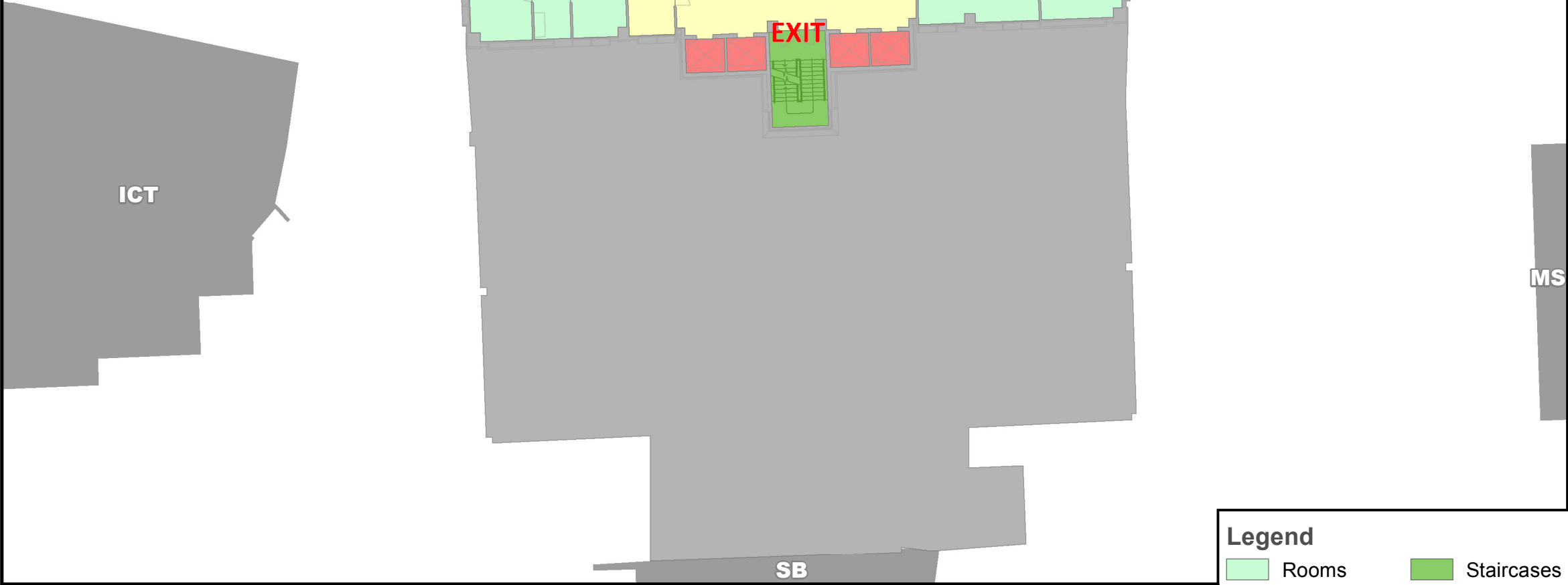
- Activate the **nearest** fire alarm pull station along exit path.
- Take coat and keys if immediately available.
- Evacuate building through the nearest exit. **Use stairs, do not use elevators.**
- Close all doors along your exit route.
- Move away from the building & proceed to Assembly Point

If you have information regarding the emergency call Campus Security at **403-220-5333** from a safe location

Evacuation Assembly Point Information & Communications Technologies (ICT)



- Building You Are In
- Assembly Point During an Emergency



Legend

Rooms

Washrooms

Elevators

Staircases

Hallways

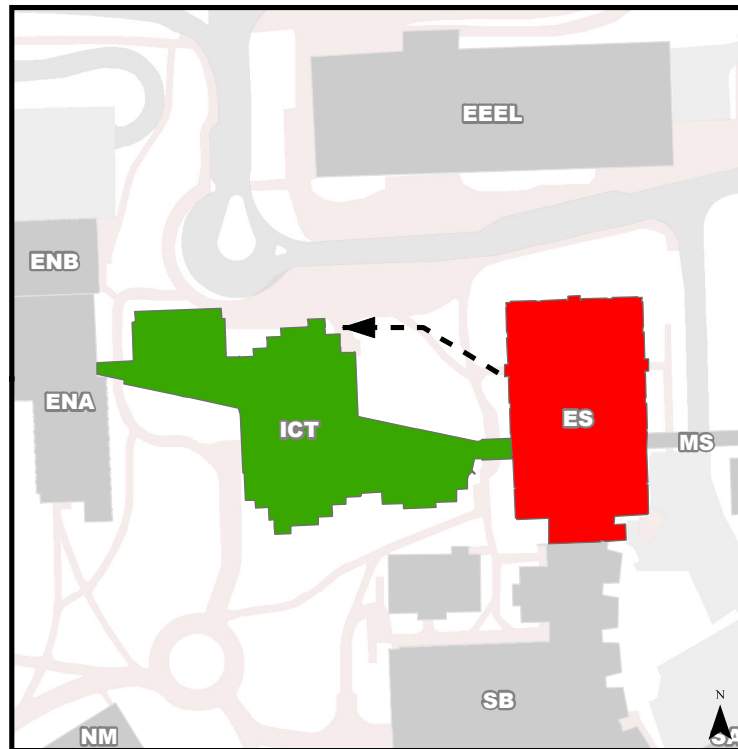
You Are Here

Emergency Evacuation Procedures

- Activate the **nearest** fire alarm pull station along exit path.
- Take coat and keys if immediately available.
- Evacuate building through the nearest exit. **Use stairs, do not use elevators.**
- Close all doors along your exit route.
- Move away from the building & proceed to Assembly Point

If you have information regarding the emergency call Campus Security at
403-220-5333 from a safe location

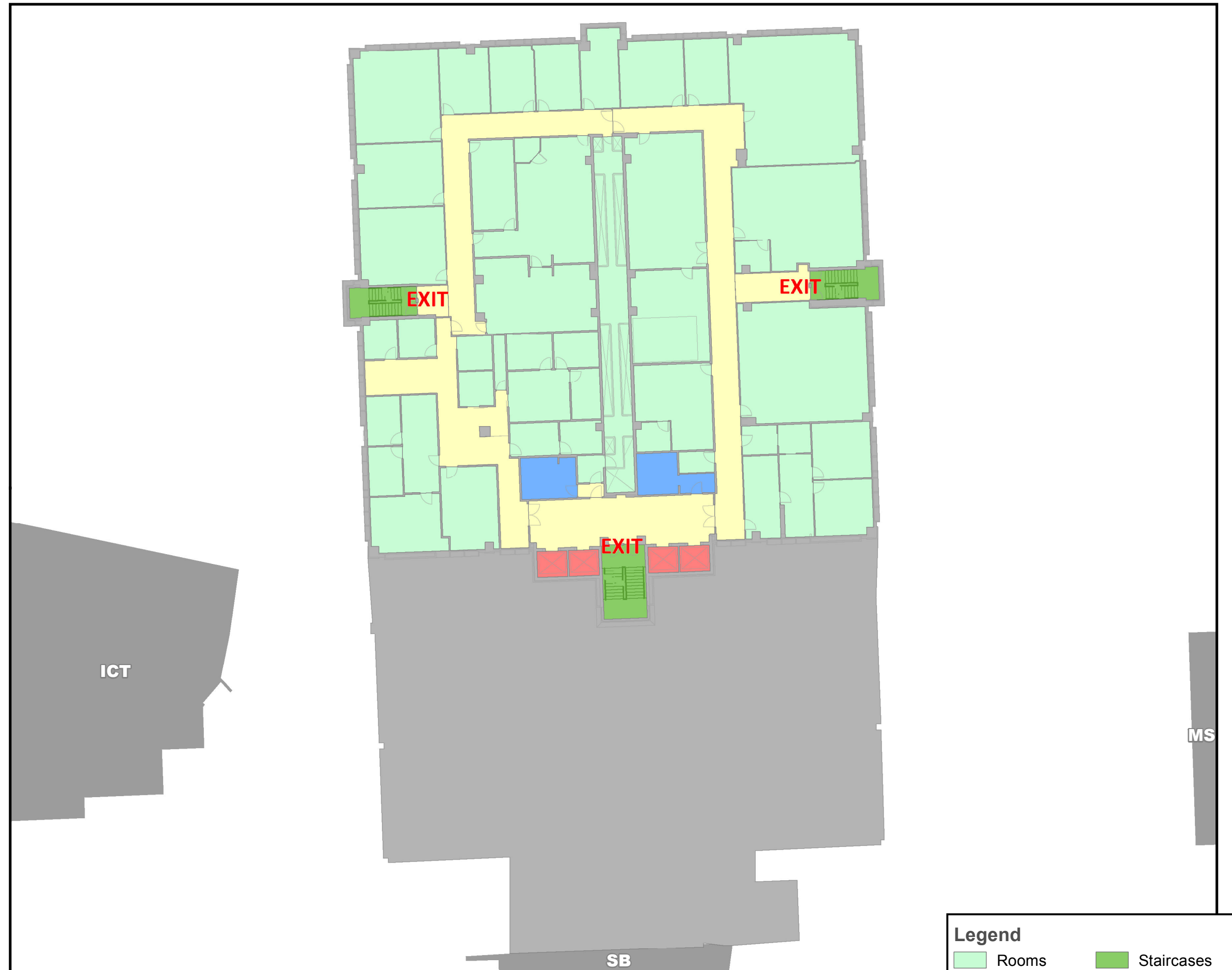
Evacuation Assembly Point Information & Communications Technologies (ICT)



- Building You Are In
- Assembly Point During an Emergency

Earth Science (ES)

Floor: 09



ucmaps@ucalgary.ca
Dec 18, 2012

Legend

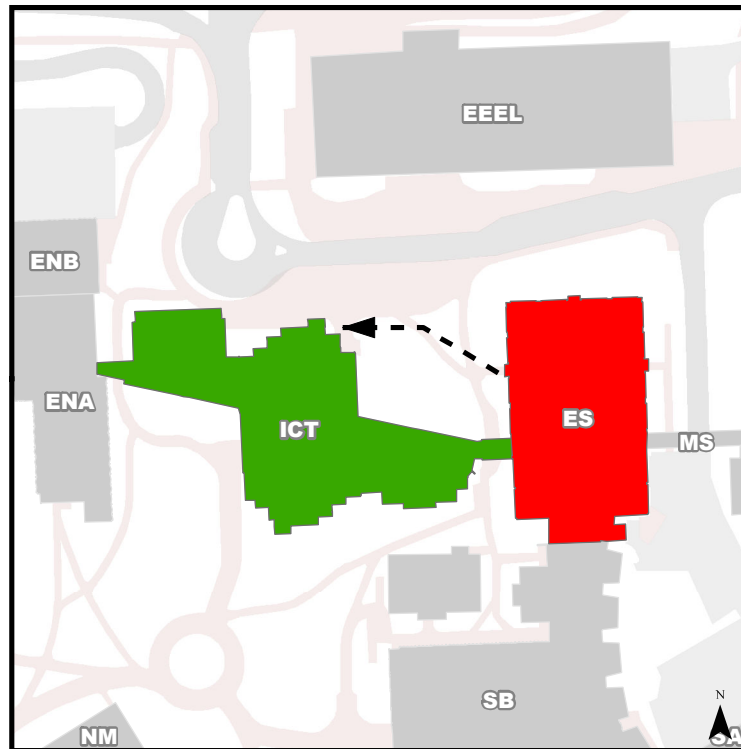
- | | |
|--|--|
| Rooms | Staircases |
| Washrooms | Hallways |
| Elevators | You Are Here |

Emergency Evacuation Procedures

- Activate the **nearest** fire alarm pull station along exit path.
- Take coat and keys if immediately available.
- Evacuate building through the nearest exit. **Use stairs, do not use elevators.**
- Close all doors along your exit route.
- Move away from the building & proceed to Assembly Point

If you have information regarding the emergency call Campus Security at **403-220-5333** from a safe location

Evacuation Assembly Point Information & Communications Technologies (ICT)



- Building You Are In
- Assembly Point During an Emergency

Earth Science (ES)

Floor: 10



ucmaps@ucalgary.ca
Dec 18, 2012

Legend

- | | |
|--|--|
| Rooms | Staircases |
| Washrooms | Hallways |
| Elevators | You Are Here |

Emergency Evacuation Procedures

- Activate the **nearest** fire alarm pull station along exit path.
- Take coat and keys if immediately available.
- Evacuate building through the nearest exit. **Use stairs, do not use elevators.**
- Close all doors along your exit route.
- Move away from the building & proceed to Assembly Point

If you have information regarding the emergency call Campus Security at
403-220-5333 from a safe location

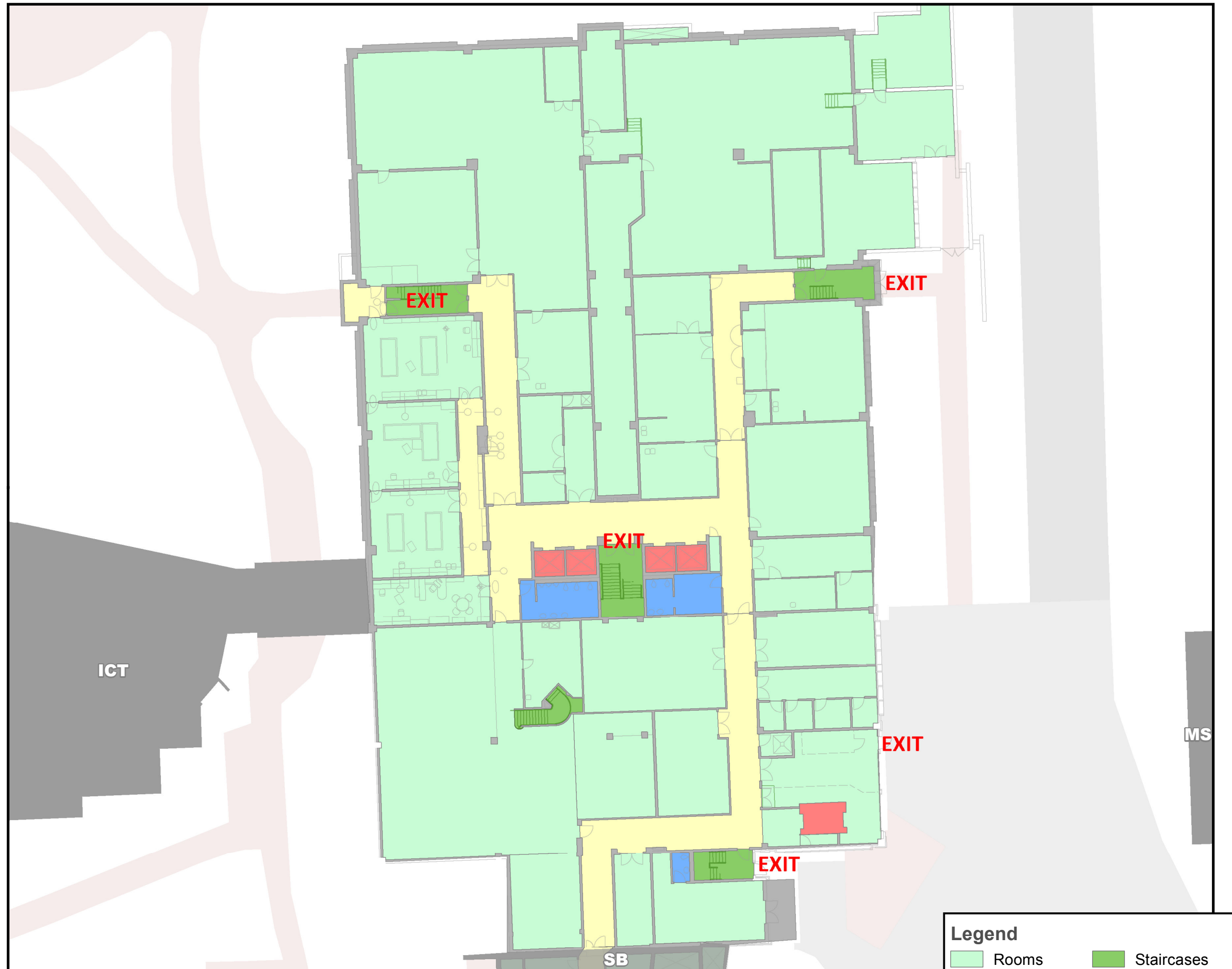
Evacuation Assembly Point Information & Communications Technologies (ICT)



- Building You Are In
- Assembly Point During an Emergency

Earth Science (ES)

Floor: B1



ucmaps@ucalgary.ca
Dec 18, 2012

Legend

- | | |
|--|--|
| Rooms | Staircases |
| Washrooms | Hallways |
| Elevators | You Are Here |

Emergency Evacuation Procedures

- Activate the **nearest** fire alarm pull station along exit path.
- Take coat and keys if immediately available.
- Evacuate building through the nearest exit. **Use stairs, do not use elevators.**
- Close all doors along your exit route.
- Move away from the building & proceed to Assembly Point

If you have information regarding the emergency call Campus Security at
403-220-5333 from a safe location

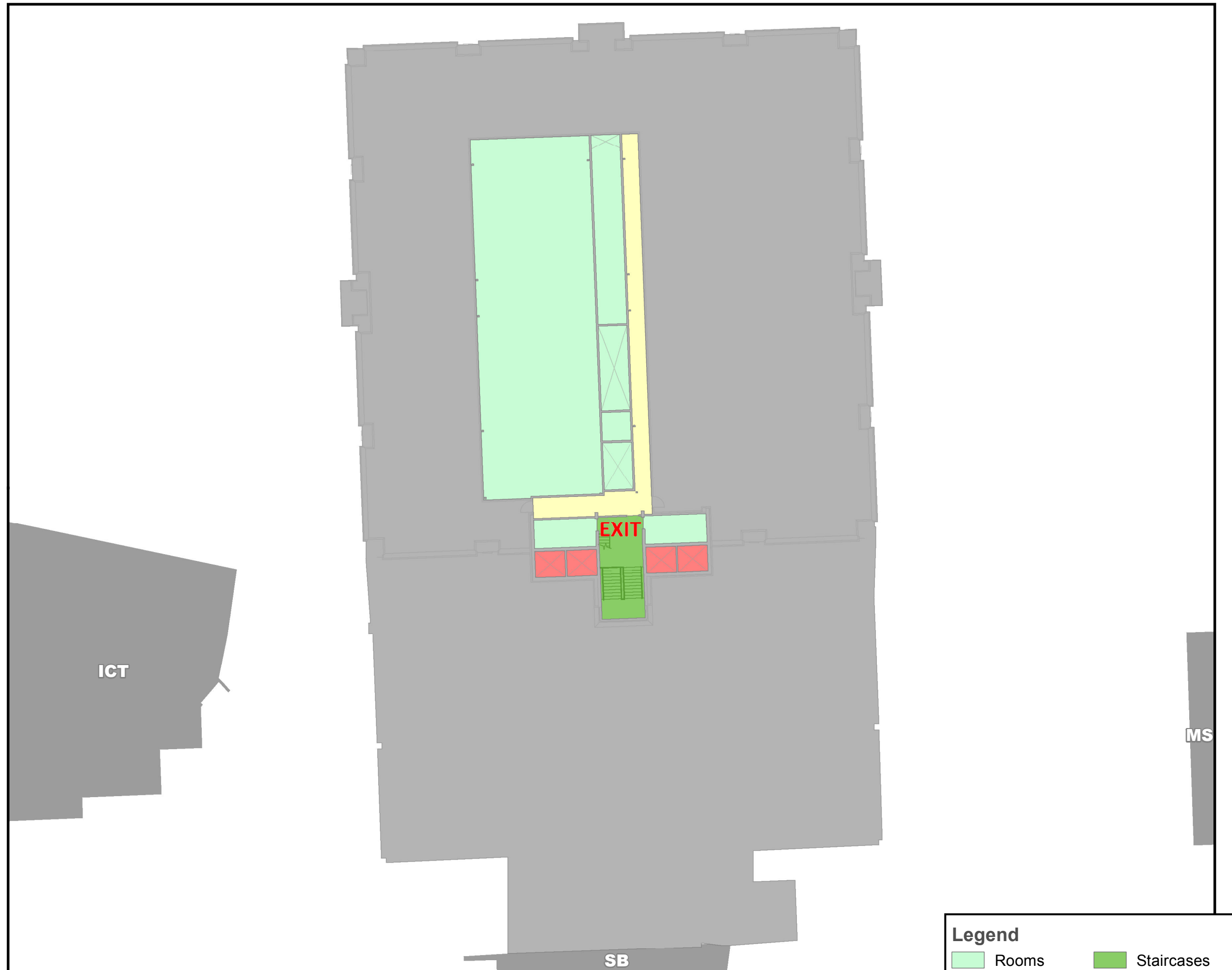
Evacuation Assembly Point Information & Communications Technologies (ICT)



- Building You Are In
- Assembly Point During an Emergency

Earth Science (ES)

Floor: P1



ucmaps@ucalgary.ca
Dec 18, 2012

Legend

- | | |
|---|--|
| Rooms | Staircases |
| Washrooms | Hallways |
| Elevators | |

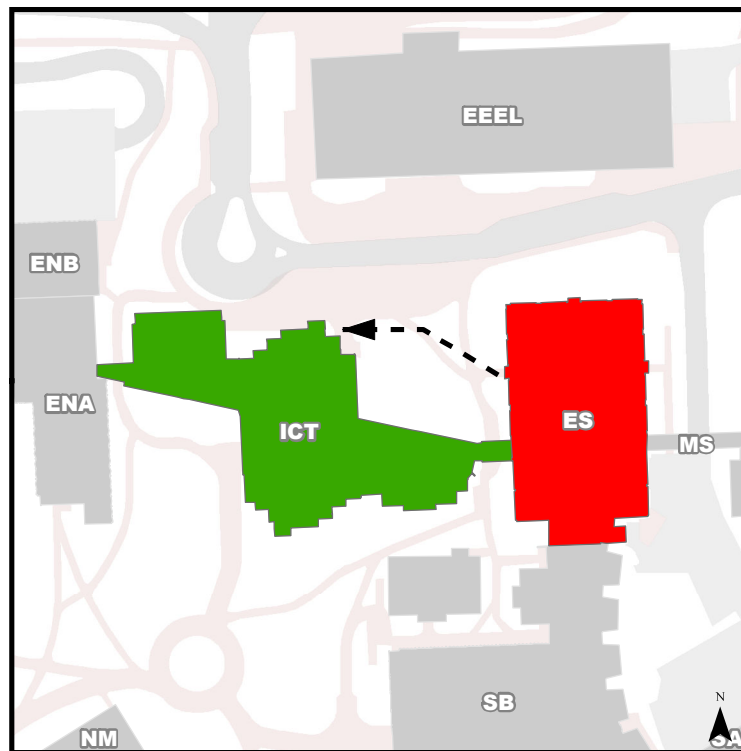
You Are Here

Emergency Evacuation Procedures

- Activate the **nearest** fire alarm pull station along exit path.
- Take coat and keys if immediately available.
- Evacuate building through the nearest exit. **Use stairs, do not use elevators.**
- Close all doors along your exit route.
- Move away from the building & proceed to Assembly Point

If you have information regarding the emergency call Campus Security at
403-220-5333 from a safe location

Evacuation Assembly Point Information & Communications Technologies (ICT)



- Building You Are In
- Assembly Point During an Emergency

Earth Science (ES)

Floor: P2



ucmaps@ucalgary.ca
Dec 18, 2012

| Legend | |
|---|--|
| Rooms | Staircases |
| Washrooms | Hallways |
| Elevators | You Are Here |