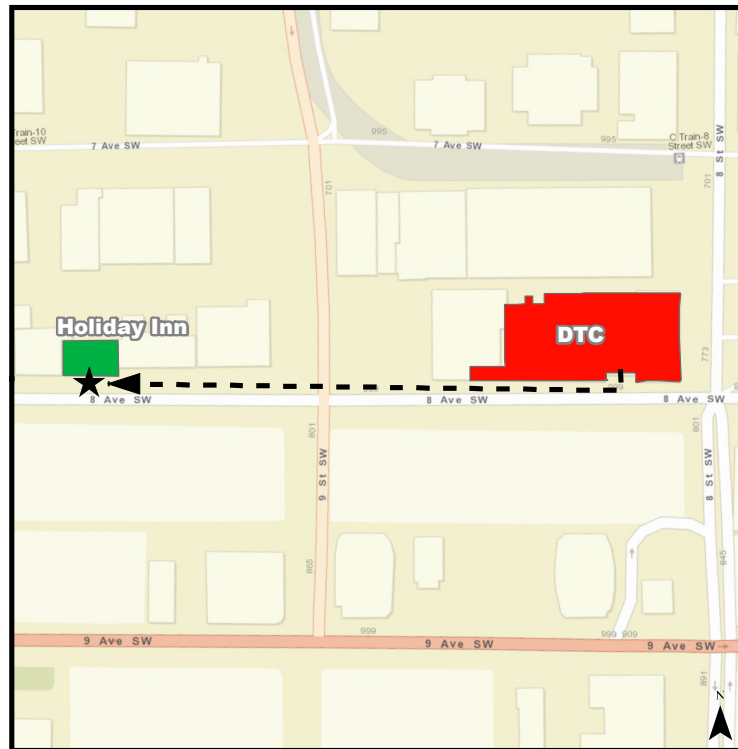


## Emergency Evacuation Procedures

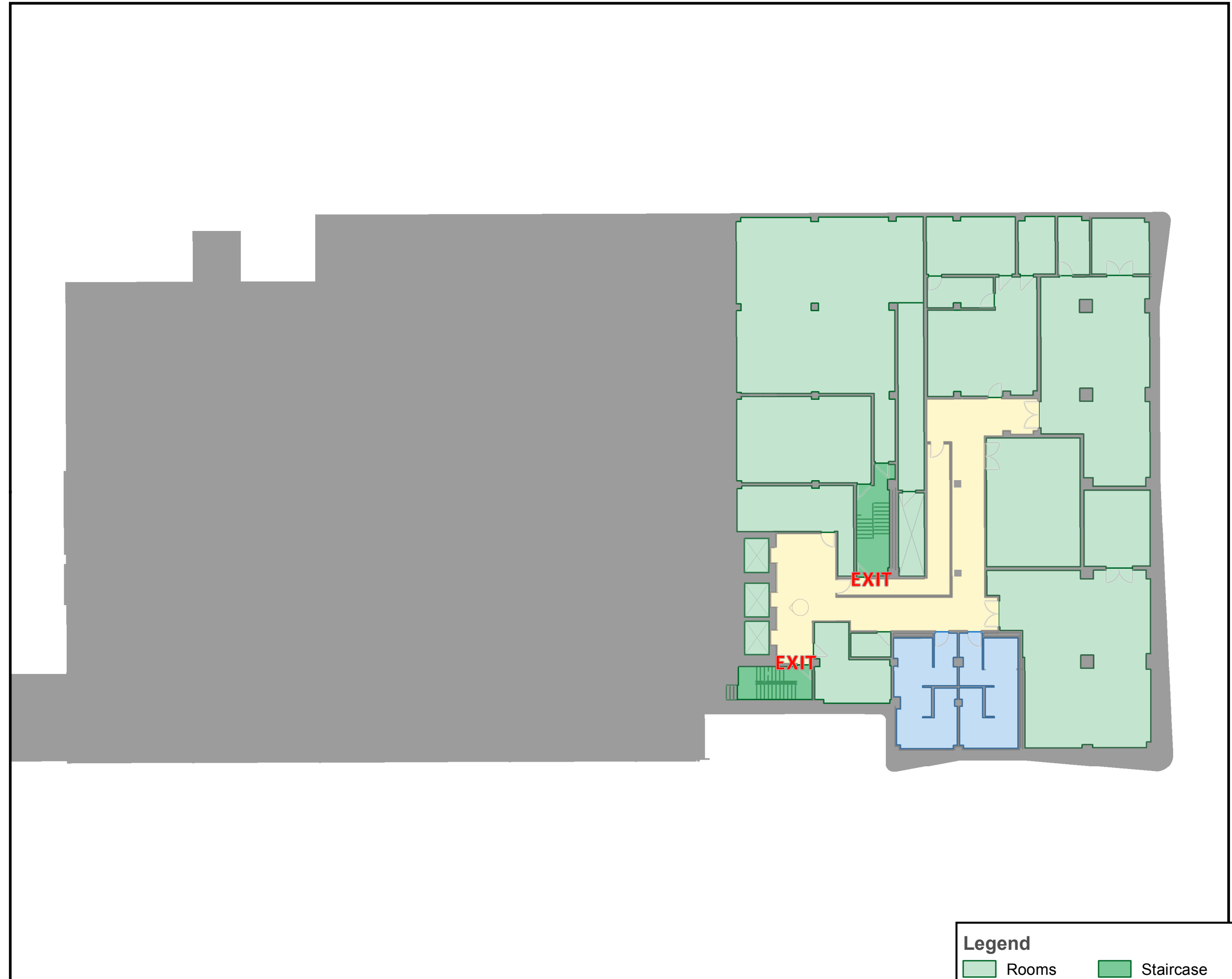
- A. Activate the **nearest** fire alarm pull station along exit path.
- B. Take coat and keys if immediately available.
- C. Evacuate building through the nearest exit. **Use stairs, do not use elevators.**
- D. Close all doors along your exit route.
- E. Move away from the building & proceed to Assembly Point

If you have information regarding the emergency call Campus Security at **403-220-5333** from a safe location

## Evacuation Assembly Point Holiday Inn (1020 8 Ave SW)



- Building You Are In
- Assembly Point (Holiday Inn: Sidewalk)



Service Layer Credits: Sources: Esri, HERE, DeLorme, USGS, Intermap, increment P Corp., NRCAN, Esri Japan, METI, Esri China (Hong Kong), Esri (Thailand), TomTom, MapmyIndia, © OpenStreetMap contributors, and the GIS User Community

ucmaps@ucalgary.ca  
4/8/2016

### Legend

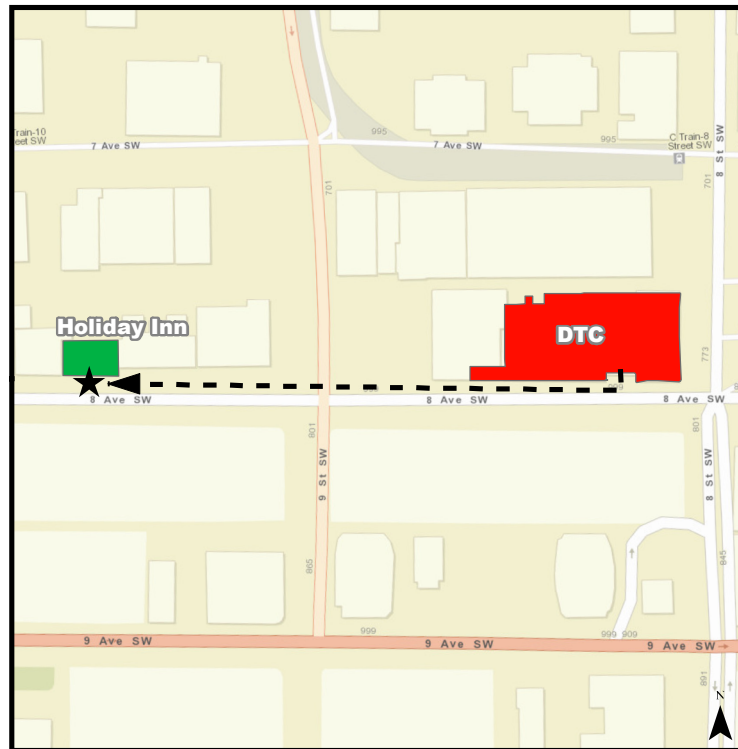
- Rooms
- Staircase
- Washroom
- Hallway
- Elevator
- ★ You Are Here



## Emergency Evacuation Procedures

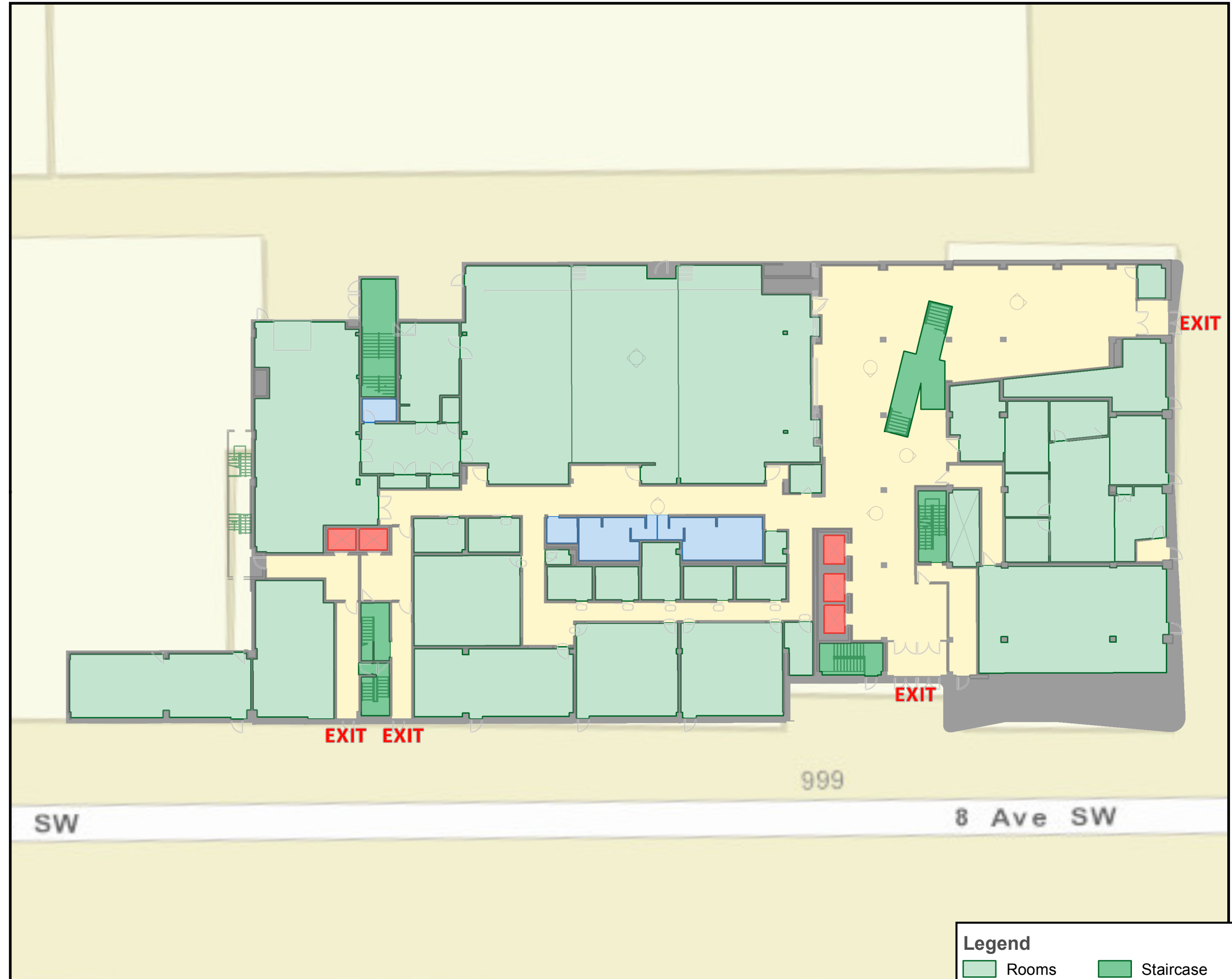
- A. Activate the **nearest** fire alarm pull station along exit path.
- B. Take coat and keys if immediately available.
- C. Evacuate building through the nearest exit. **Use stairs, do not use elevators.**
- D. Close all doors along your exit route.
- E. Move away from the building & proceed to Assembly Point

If you have information regarding the emergency call Campus Security at **403-220-5333** from a safe location






## Evacuation Assembly Point Holiday Inn (1020 8 Ave SW)



-  Building You Are In
-  Assembly Point (Holiday Inn: Sidewalk)



Service Layer Credits: Sources: Esri, HERE, DeLorme, USGS, Intermap, increment P Corp., NRCAN, Esri Japan, METI, Esri China (Hong Kong), Esri (Thailand), TomTom, MapmyIndia, © OpenStreetMap contributors, and the GIS User Community  
ucmaps@ucalgary.ca  
4/8/2016

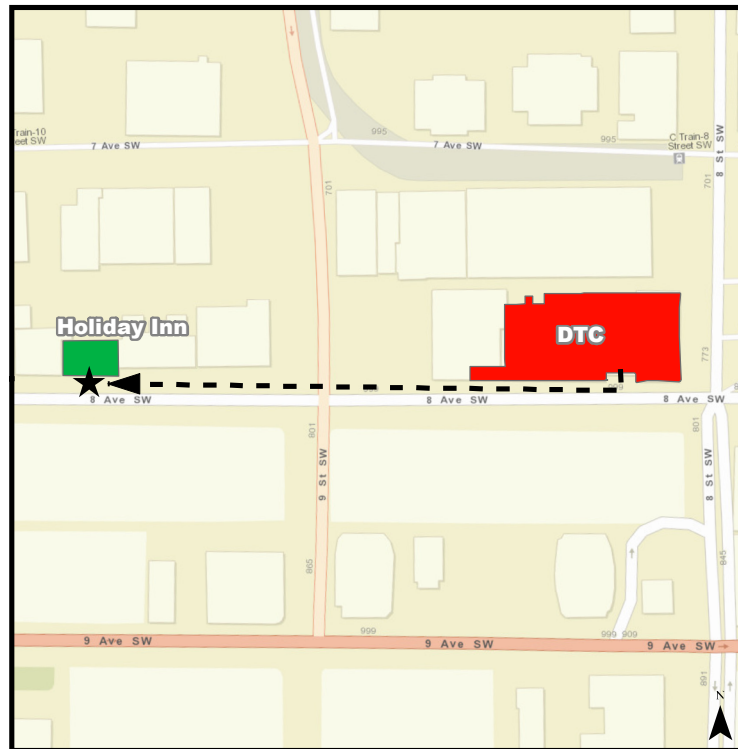
Legend	
 Rooms	 Staircase
 Washroom	 Hallway
 Elevator	<b>You Are Here</b>

## Emergency Evacuation Procedures

- A. Activate the **nearest** fire alarm pull station along exit path.
- B. Take coat and keys if immediately available.
- C. Evacuate building through the nearest exit. **Use stairs, do not use elevators.**
- D. Close all doors along your exit route.
- E. Move away from the building & proceed to Assembly Point

If you have information regarding the emergency call Campus Security at **403-220-5333** from a safe location

## Evacuation Assembly Point Holiday Inn (1020 8 Ave SW)



- Building You Are In
- Assembly Point (Holiday Inn: Sidewalk)

**Legend**

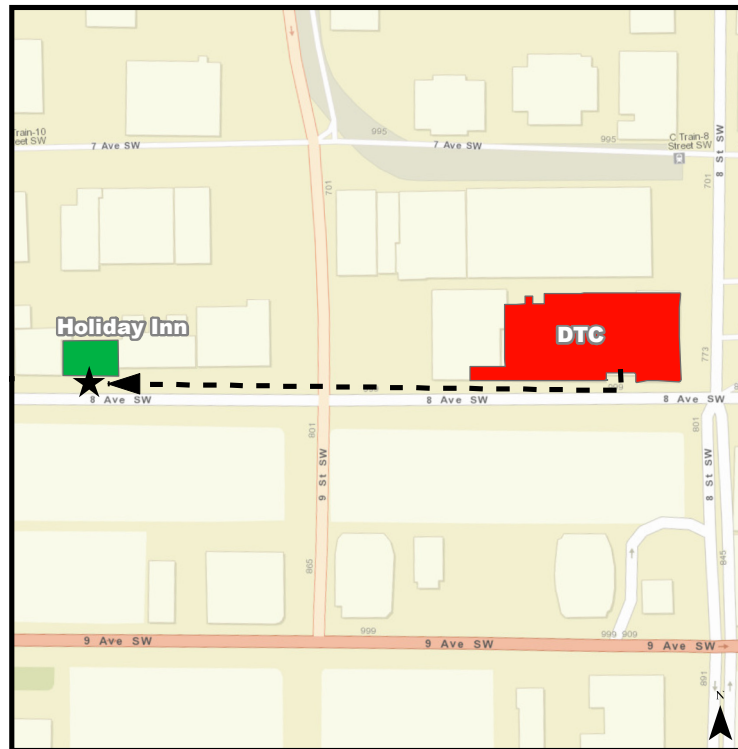
- |  |   |
|--|---|
| <span style="display: inline-block; width: 20px; height: 10px; background-color: lightgreen; border: 1px solid black;"></span> Rooms   | <span style="display: inline-block; width: 20px; height: 10px; background-color: darkgreen; border: 1px solid black;"></span> Staircase |
| <span style="display: inline-block; width: 20px; height: 10px; background-color: lightblue; border: 1px solid black;"></span> Washroom | <span style="display: inline-block; width: 20px; height: 10px; background-color: yellow; border: 1px solid black;"></span> Hallway      |
| <span style="display: inline-block; width: 20px; height: 10px; background-color: red; border: 1px solid black;"></span> Elevator       | <b>You Are Here</b>   |

## Emergency Evacuation Procedures

- A. Activate the **nearest** fire alarm pull station along exit path.
- B. Take coat and keys if immediately available.
- C. Evacuate building through the nearest exit. **Use stairs, do not use elevators.**
- D. Close all doors along your exit route.
- E. Move away from the building & proceed to Assembly Point

If you have information regarding the emergency call Campus Security at **403-220-5333** from a safe location

## Evacuation Assembly Point Holiday Inn (1020 8 Ave SW)



- Building You Are In
- Assembly Point (Holiday Inn: Sidewalk)



Service Layer Credits: Sources: Esri, HERE, DeLorme, USGS, Intermap, increment P Corp., NRCAN, Esri Japan, METI, Esri China (Hong Kong), Esri (Thailand), TomTom, MapmyIndia, © OpenStreetMap contributors, and the GIS User Community  
ucmaps@ucalgary.ca  
4/8/2016

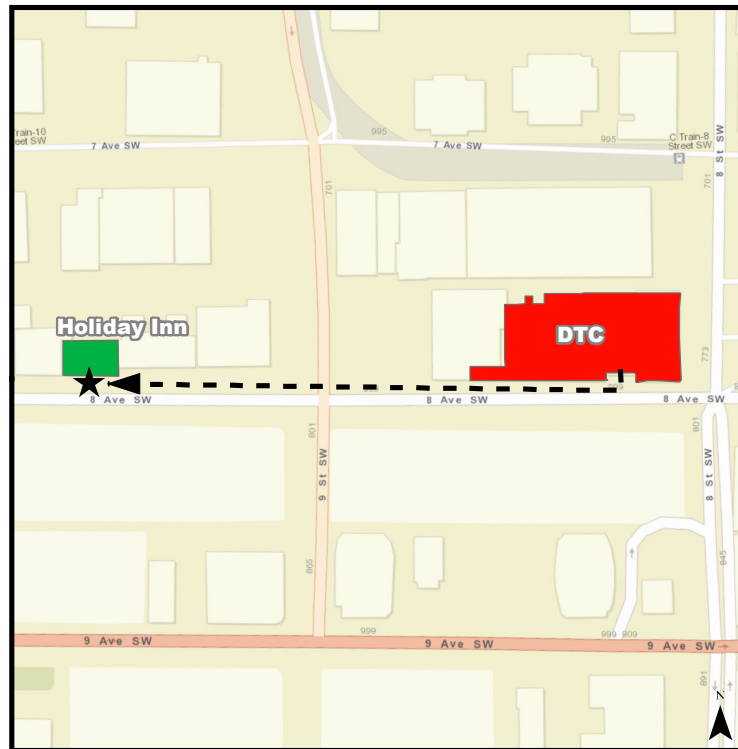
Legend	
<span style="display: inline-block; width: 15px; height: 15px; background-color: lightgreen; border: 1px solid black;"></span> Rooms	<span style="display: inline-block; width: 15px; height: 15px; background-color: green; border: 1px solid black;"></span> Staircase
<span style="display: inline-block; width: 15px; height: 15px; background-color: lightblue; border: 1px solid black;"></span> Washroom	<span style="display: inline-block; width: 15px; height: 15px; background-color: yellow; border: 1px solid black;"></span> Hallway
<span style="display: inline-block; width: 15px; height: 15px; background-color: red; border: 1px solid black;"></span> Elevator	<b>You Are Here</b>

## Emergency Evacuation Procedures

- A. Activate the **nearest** fire alarm pull station along exit path.
- B. Take coat and keys if immediately available.
- C. Evacuate building through the nearest exit. **Use stairs, do not use elevators.**
- D. Close all doors along your exit route.
- E. Move away from the building & proceed to Assembly Point

If you have information regarding the emergency call Campus Security at **403-220-5333** from a safe location

## Evacuation Assembly Point Holiday Inn (1020 8 Ave SW)



- Building You Are In
- Assembly Point (Holiday Inn: Sidewalk)



Service Layer Credits: Sources: Esri, HERE, DeLorme, USGS, Intermap, increment P Corp., NRCAN, Esri Japan, METI, Esri China (Hong Kong), Esri (Thailand), TomTom, MapmyIndia, © OpenStreetMap contributors, and the GIS User Community  
 ucmaps@ucalgary.ca  
 4/8/2016

Legend	
<span style="display: inline-block; width: 15px; height: 10px; background-color: lightgreen; border: 1px solid black;"></span> Rooms	<span style="display: inline-block; width: 15px; height: 10px; background-color: darkgreen; border: 1px solid black;"></span> Staircase
<span style="display: inline-block; width: 15px; height: 10px; background-color: lightblue; border: 1px solid black;"></span> Washroom	<span style="display: inline-block; width: 15px; height: 10px; background-color: yellow; border: 1px solid black;"></span> Hallway
<span style="display: inline-block; width: 15px; height: 10px; background-color: red; border: 1px solid black;"></span> Elevator	<b>You Are Here</b>

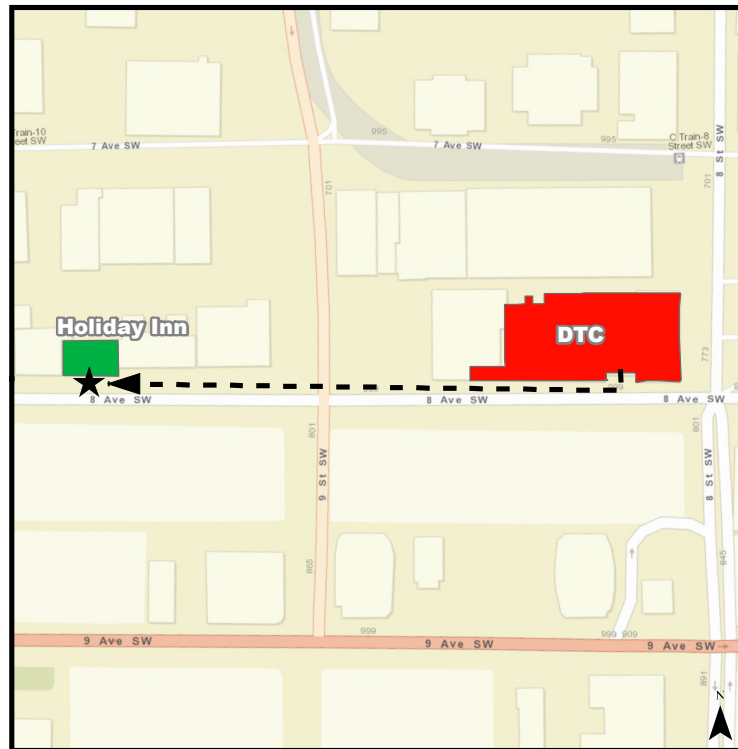


## Emergency Evacuation Procedures

- Activate the **nearest** fire alarm pull station along exit path.
- Take coat and keys if immediately available.
- Evacuate building through the nearest exit. **Use stairs, do not use elevators.**
- Close all doors along your exit route.
- Move away from the building & proceed to Assembly Point

If you have information regarding the emergency call Campus Security at **403-220-5333** from a safe location

## Evacuation Assembly Point Holiday Inn (1020 8 Ave SW)



- Building You Are In
- Assembly Point (Holiday Inn: Sidewalk)



Service Layer Credits: Sources: Esri, HERE, DeLorme, USGS, Intermap, increment P Corp., NRCAN, Esri Japan, METI, Esri China (Hong Kong), Esri (Thailand), TomTom, MapmyIndia, © OpenStreetMap contributors, and the GIS User Community  
ucmaps@ucalgary.ca  
4/8/2016

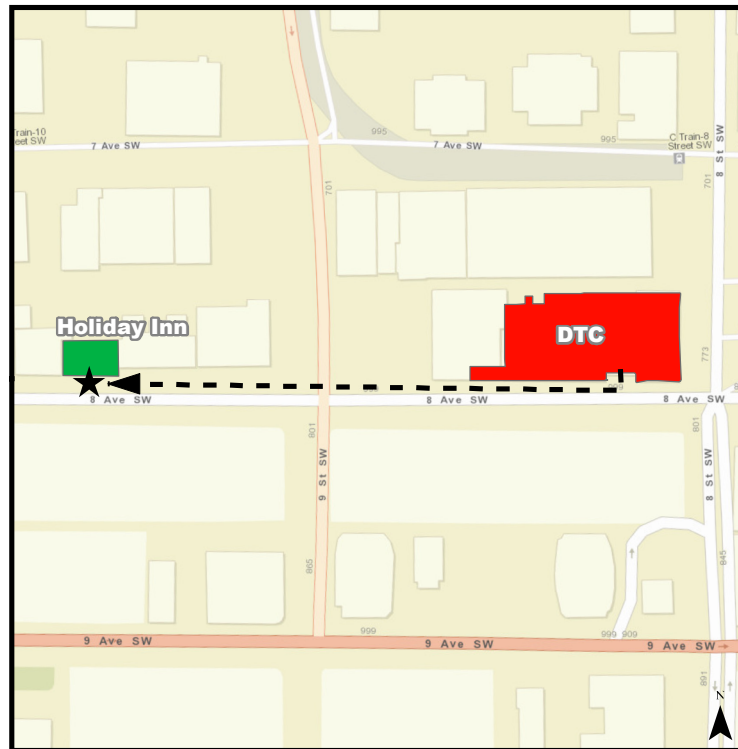
Legend	
<span style="display: inline-block; width: 15px; height: 10px; background-color: #c8e6c9; border: 1px solid black;"></span> Rooms	<span style="display: inline-block; width: 15px; height: 10px; background-color: #4caf50; border: 1px solid black;"></span> Staircase
<span style="display: inline-block; width: 15px; height: 10px; background-color: #bbdefb; border: 1px solid black;"></span> Washroom	<span style="display: inline-block; width: 15px; height: 10px; background-color: #fff9c4; border: 1px solid black;"></span> Hallway
<span style="display: inline-block; width: 15px; height: 10px; background-color: #f44336; border: 1px solid black;"></span> Elevator	<b>You Are Here</b>

## Emergency Evacuation Procedures

- A. Activate the **nearest** fire alarm pull station along exit path.
- B. Take coat and keys if immediately available.
- C. Evacuate building through the nearest exit. **Use stairs, do not use elevators.**
- D. Close all doors along your exit route.
- E. Move away from the building & proceed to Assembly Point

If you have information regarding the emergency call Campus Security at **403-220-5333** from a safe location

## Evacuation Assembly Point Holiday Inn (1020 8 Ave SW)



- Building You Are In
- Assembly Point (Holiday Inn: Sidewalk)



Service Layer Credits: Sources: Esri, HERE, DeLorme, USGS, Intermap, increment P Corp., NRCAN, Esri Japan, METI, Esri China (Hong Kong), Esri (Thailand), TomTom, MapmyIndia, © OpenStreetMap contributors, and the GIS User Community  
ucmaps@ucalgary.ca  
4/8/2016

### Legend

- Rooms
- Washroom
- Elevator
- Staircase
- Hallway
- You Are Here