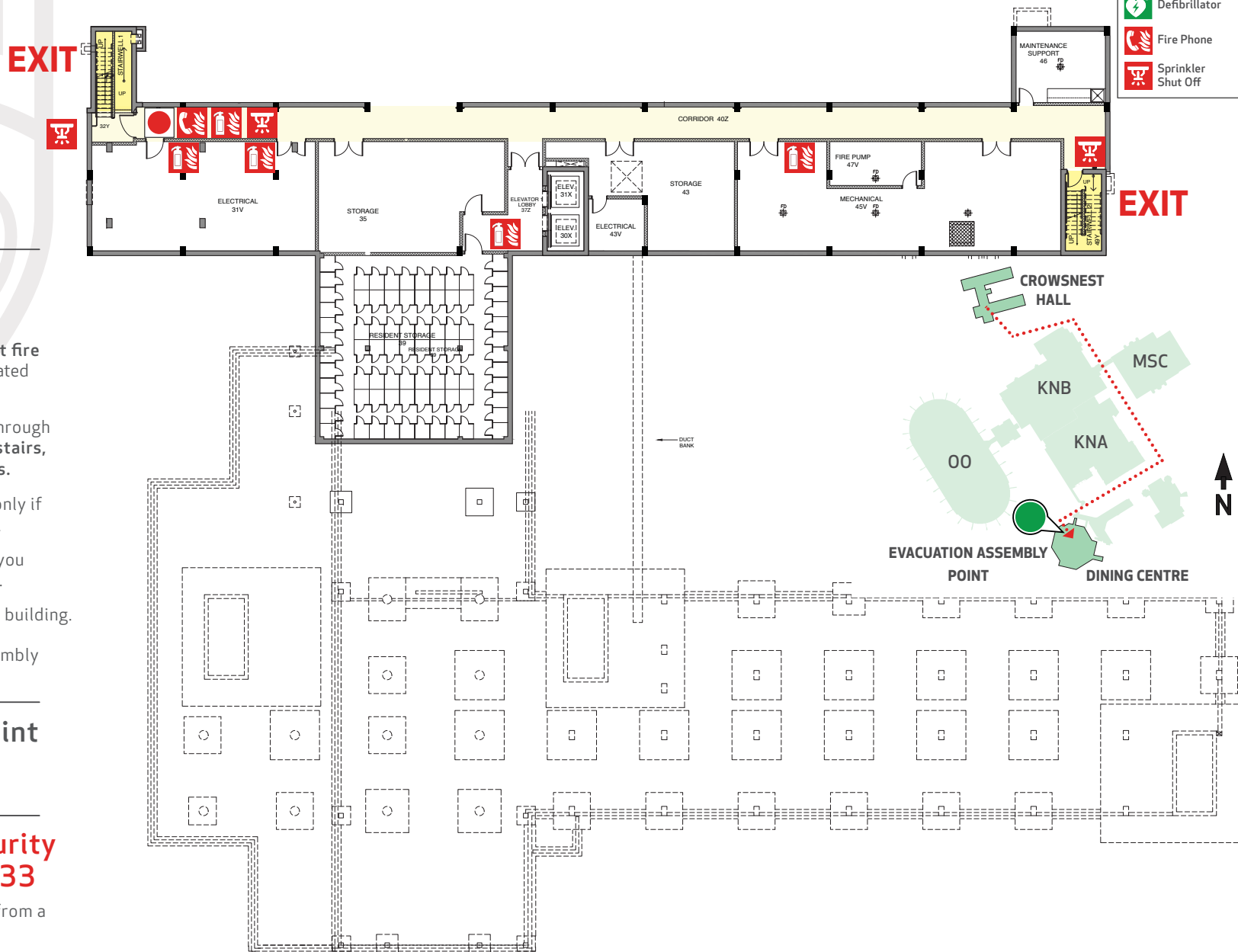


# Emergency Evacuation Map Crowsnest Hall - Basement

Legend	
	You Are Here
	Fire Extinguisher
	Pull Station
	Defibrillator
	Fire Phone
	Sprinkler Shut Off



## Evacuation Procedures

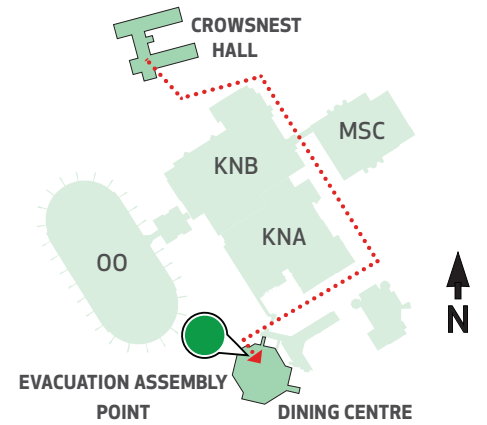
- Activate the nearest fire alarm pull station located long exit path.
- Evacuate building through the nearest exit. Use stairs, do not use elevators.
- Take coat and keys only if immediately available.
- Close doors behind you along your exit route.
- Move away from the building.
- Proceed to the Assembly Point.

## Assembly Point

Primary:  
Dining Centre

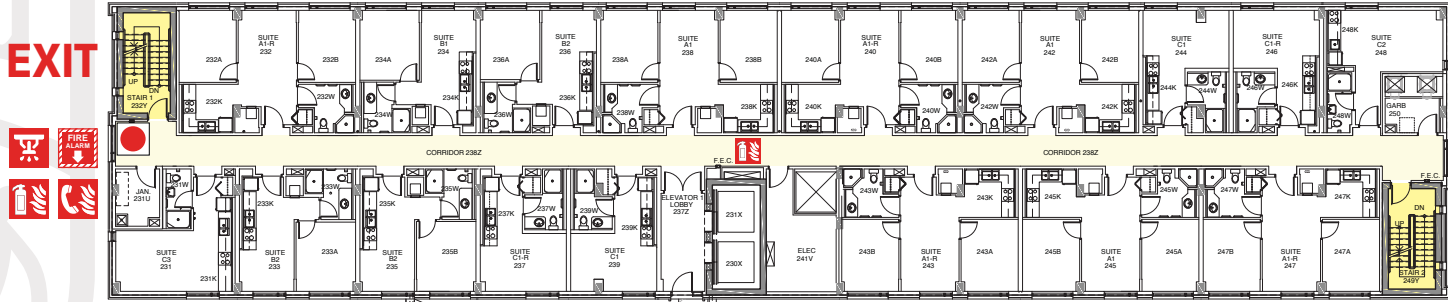
**Campus Security**  
**403-220-5333**

Report emergencies from a safe location.



# Emergency Evacuation Map Crowsnest Hall - Floor Two

Legend	
	You Are Here
	Fire Extinguisher
	Pull Station
	Defibrillator
	Fire Phone
	Sprinkler Shut Off



**EXIT**

**EXIT**

## Evacuation Procedures

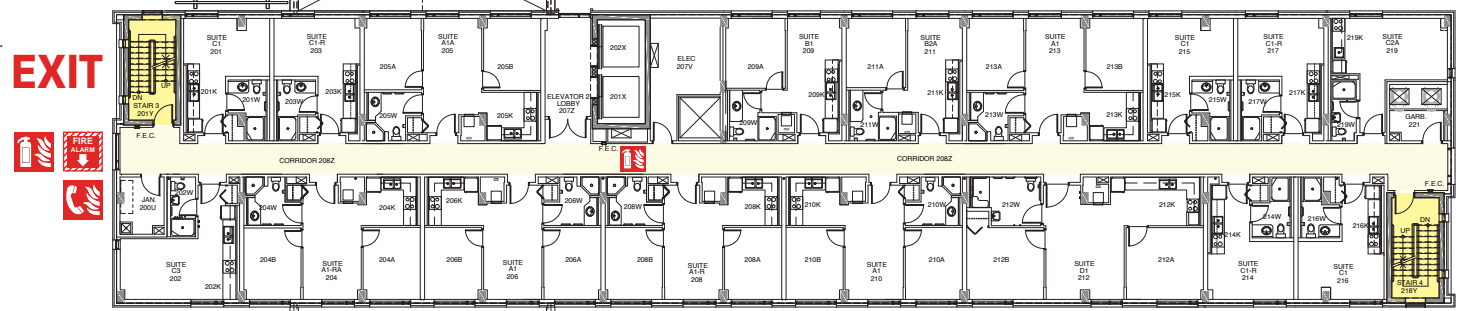
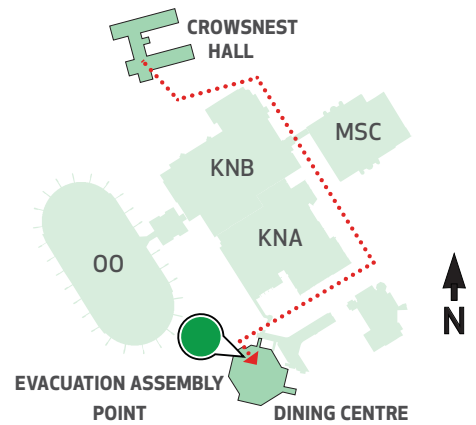
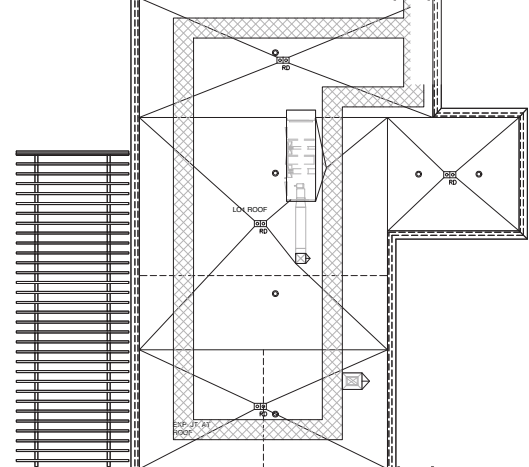
- Activate the nearest fire alarm pull station located long exit path.
- Evacuate building through the nearest exit. Use stairs, do not use elevators.
- Take coat and keys only if immediately available.
- Close doors behind you along your exit route.
- Move away from the building.
- Proceed to the Assembly Point.

## Assembly Point

Primary:  
Dining Centre

Campus Security  
403-220-5333

Report emergencies from a safe location.

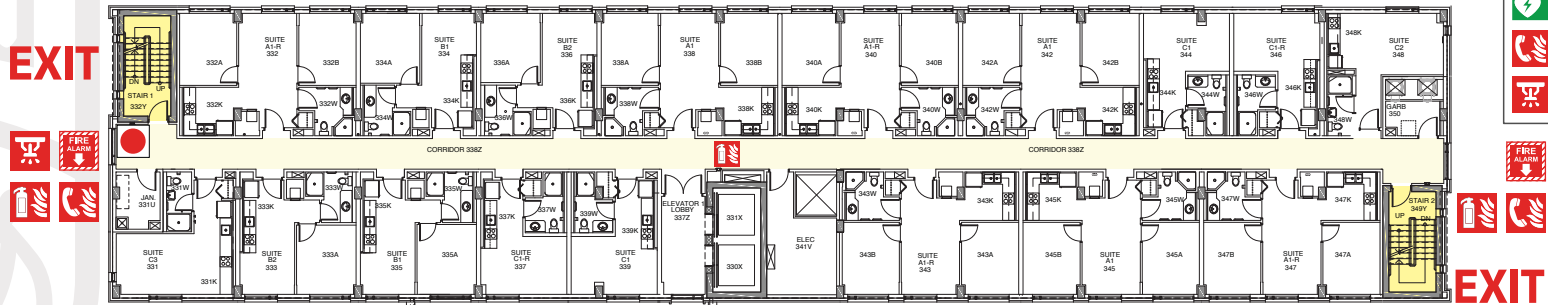


**EXIT**

**EXIT**

# Emergency Evacuation Map Crowsnest Hall - Floor Three

Legend	
	You Are Here
	Fire Extinguisher
	Pull Station
	Defibrillator
	Fire Phone
	Sprinkler Shut Off



**EXIT**

**EXIT**

## Evacuation Procedures

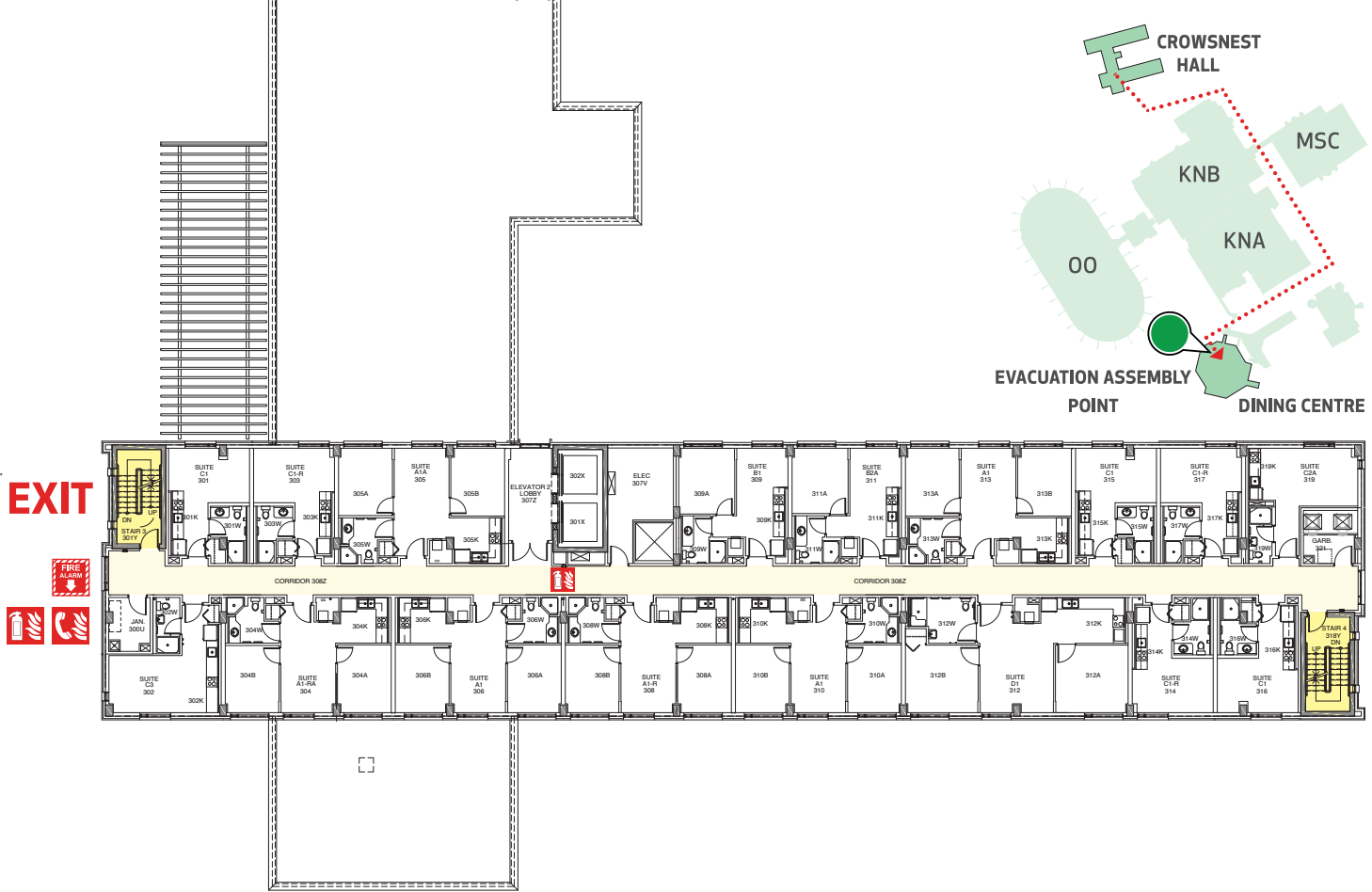
- Activate the nearest fire alarm pull station located long exit path.
- Evacuate building through the nearest exit. Use stairs, do not use elevators.
- Take coat and keys only if immediately available.
- Close doors behind you along your exit route.
- Move away from the building.
- Proceed to the Assembly Point.

## Assembly Point

Primary:  
Dining Centre

Campus Security  
403-220-5333

Report emergencies from a safe location.



**EXIT**

**EXIT**

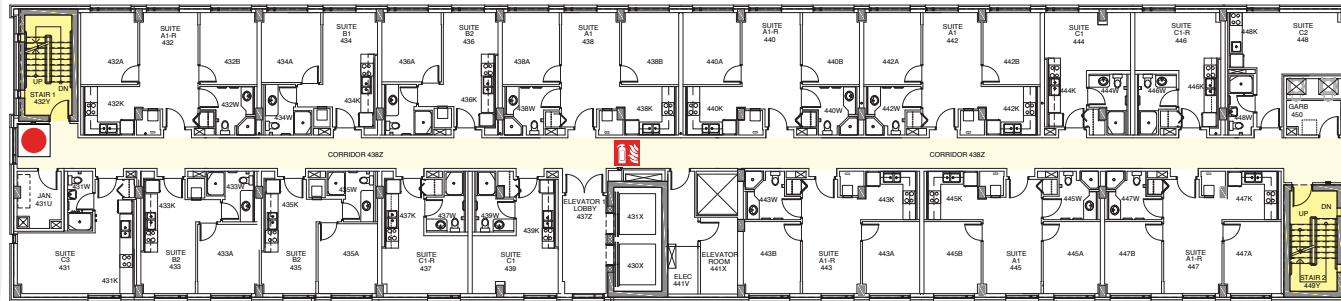
**EXIT**



# Emergency Evacuation Map Crowsnest Hall - Floor Four

Legend	
	You Are Here
	Fire Extinguisher
	Pull Station
	Defibrillator
	Fire Phone
	Sprinkler Shut Off

**EXIT**



**EXIT**

## Evacuation Procedures

- Activate the nearest fire alarm pull station located long exit path.
- Evacuate building through the nearest exit. Use stairs, do not use elevators.
- Take coat and keys only if immediately available.
- Close doors behind you along your exit route.
- Move away from the building.
- Proceed to the Assembly Point.

## Assembly Point

Primary:  
Dining Centre

Campus Security  
403-220-5333

Report emergencies from a safe location.



**EXIT**

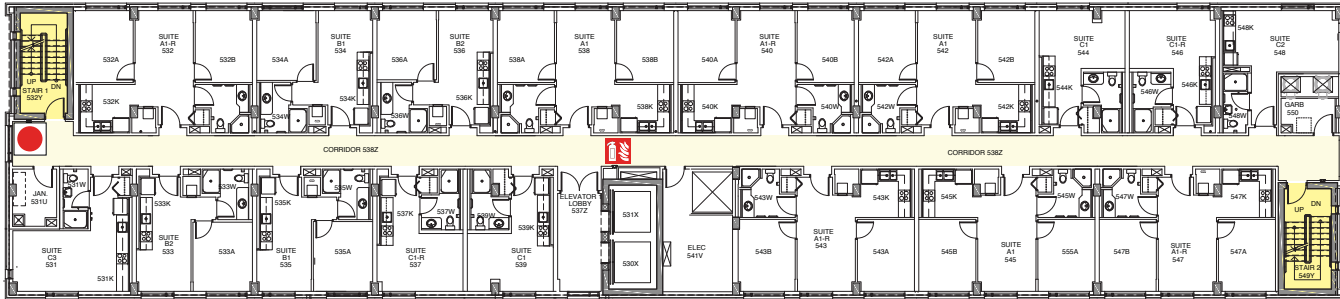


**EXIT**

# Emergency Evacuation Map Crowsnest Hall - Floor Five

Legend	
	You Are Here
	Fire Extinguisher
	Pull Station
	Defibrillator
	Fire Phone
	Sprinkler Shut Off

**EXIT**



**EXIT**

## Evacuation Procedures

- Activate the nearest fire alarm pull station located long exit path.
- Evacuate building through the nearest exit. Use stairs, do not use elevators.
- Take coat and keys only if immediately available.
- Close doors behind you along your exit route.
- Move away from the building.
- Proceed to the Assembly Point.

## Assembly Point

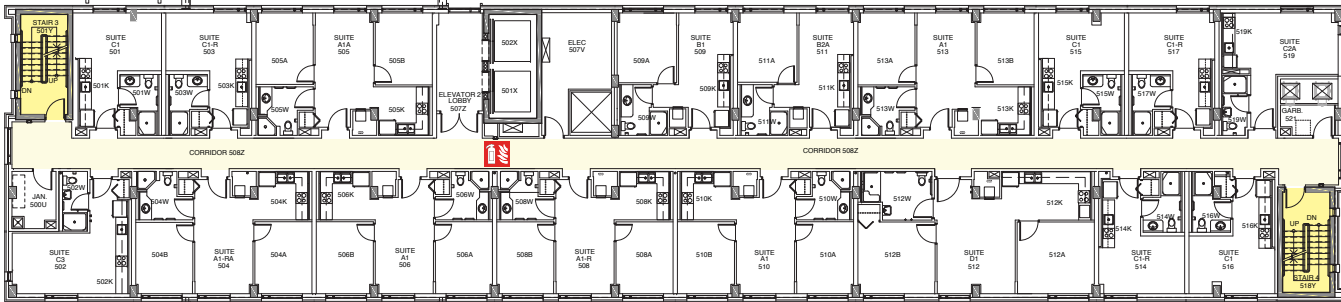
Primary:  
Dining Centre

Campus Security  
403-220-5333

Report emergencies from a safe location.



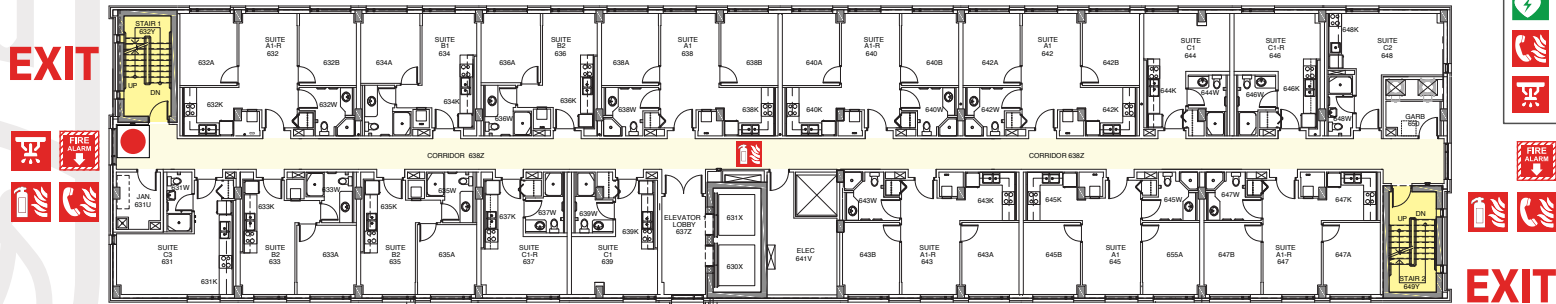
**EXIT**



**EXIT**

# Emergency Evacuation Map Crowsnest Hall - Floor Six

Legend	
	You Are Here
	Fire Extinguisher
	Pull Station
	Defibrillator
	Fire Phone
	Sprinkler Shut Off



**EXIT**

**EXIT**

## Evacuation Procedures

- Activate the nearest fire alarm pull station located long exit path.
- Evacuate building through the nearest exit. Use stairs, do not use elevators.
- Take coat and keys only if immediately available.
- Close doors behind you along your exit route.
- Move away from the building.
- Proceed to the Assembly Point.

## Assembly Point

Primary:  
Dining Centre

Campus Security  
403-220-5333

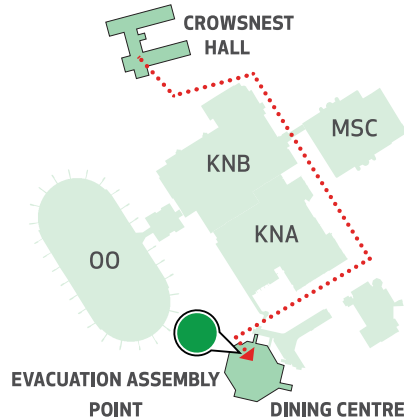
Report emergencies from a safe location.



**EXIT**

**EXIT**

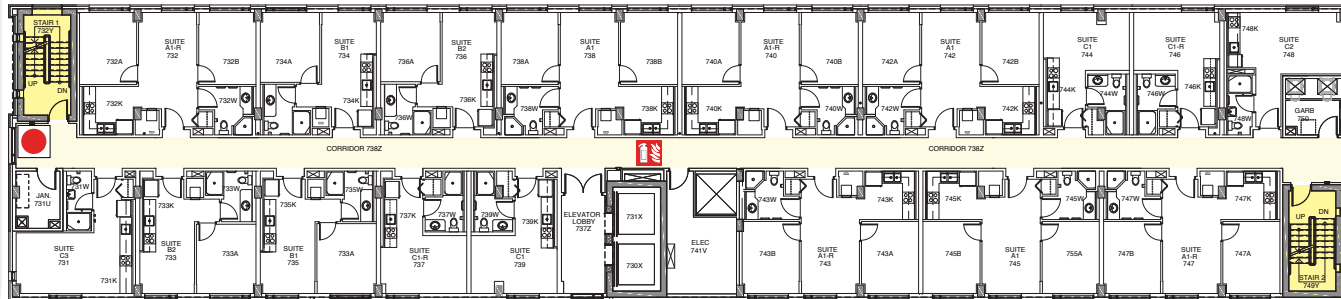
**EXIT**



# Emergency Evacuation Map Crowsnest Hall - Floor Seven

Legend	
	You Are Here
	Fire Extinguisher
	Pull Station
	Defibrillator
	Fire Phone
	Sprinkler Shut Off

**EXIT**



**EXIT**

## Evacuation Procedures

- Activate the nearest fire alarm pull station located long exit path.
- Evacuate building through the nearest exit. Use stairs, do not use elevators.
- Take coat and keys only if immediately available.
- Close doors behind you along your exit route.
- Move away from the building.
- Proceed to the Assembly Point.

## Assembly Point

Primary:  
Dining Centre

Campus Security  
403-220-5333

Report emergencies from a safe location.



**EXIT**



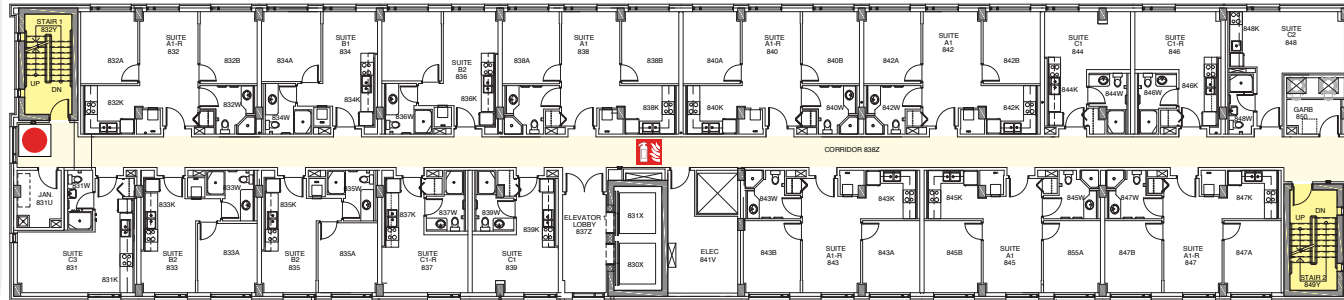
**EXIT**



# Emergency Evacuation Map Crowsnest Hall - Floor Eight & South Building Roof

Legend	
	You Are Here
	Fire Extinguisher
	Pull Station
	Defibrillator
	Fire Phone
	Sprinkler Shut Off

**EXIT**



**EXIT**

## Evacuation Procedures

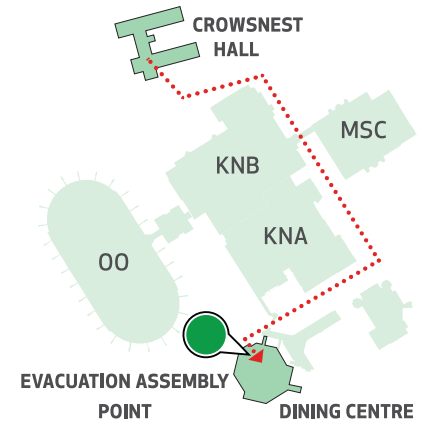
- Activate the nearest fire alarm pull station located long exit path.
- Evacuate building through the nearest exit. Use stairs, do not use elevators.
- Take coat and keys only if immediately available.
- Close doors behind you along your exit route.
- Move away from the building.
- Proceed to the Assembly Point.

## Assembly Point

Primary:  
Dining Centre

**Campus Security**  
**403-220-5333**

Report emergencies from a safe location.



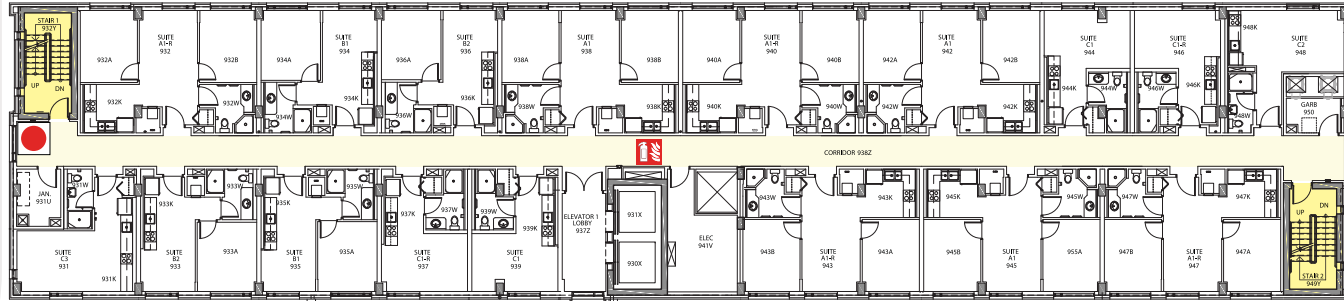
**EXIT**



# Emergency Evacuation Map Crowsnest Hall - Floor Nine

Legend	
	You Are Here
	Fire Extinguisher
	Pull Station
	Defibrillator
	Fire Phone
	Sprinkler Shut Off

**EXIT**



**EXIT**

## Evacuation Procedures

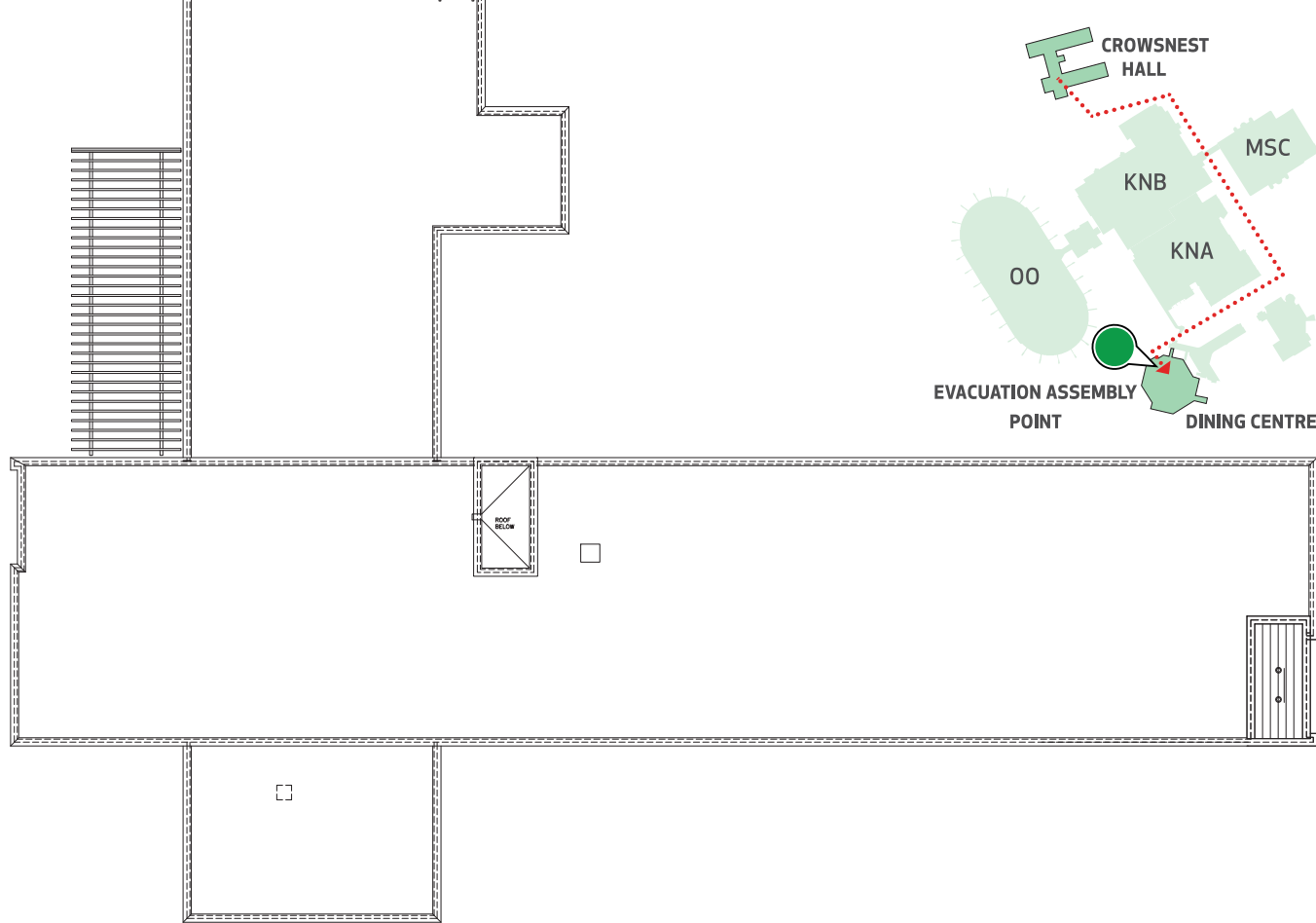
- Activate the nearest fire alarm pull station located long exit path.
- Evacuate building through the nearest exit. Use stairs, do not use elevators.
- Take coat and keys only if immediately available.
- Close doors behind you along your exit route.
- Move away from the building.
- Proceed to the Assembly Point.

## Assembly Point

Primary:  
Dining Centre

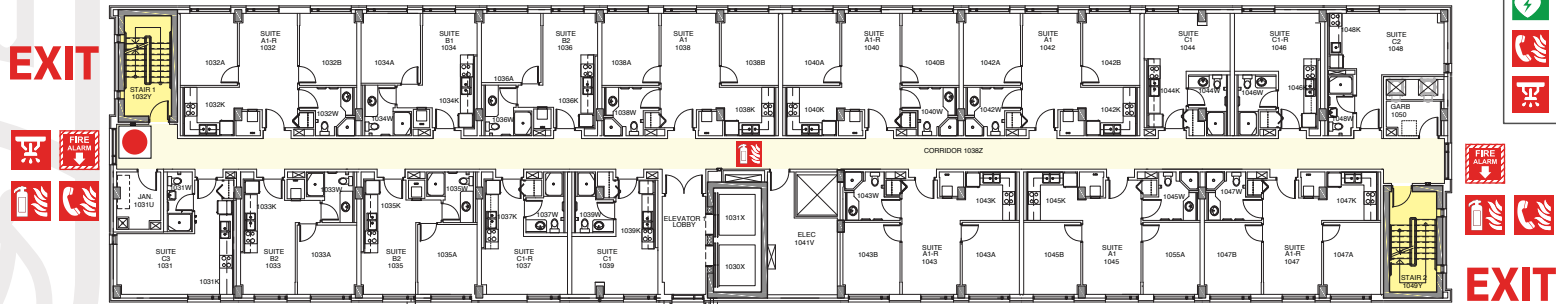
**Campus Security**  
**403-220-5333**

Report emergencies from a safe location.



# Emergency Evacuation Map Crowsnest Hall - Floor Ten

Legend	
	You Are Here
	Fire Extinguisher
	Pull Station
	Defibrillator
	Fire Phone
	Sprinkler Shut Off



## Evacuation Procedures

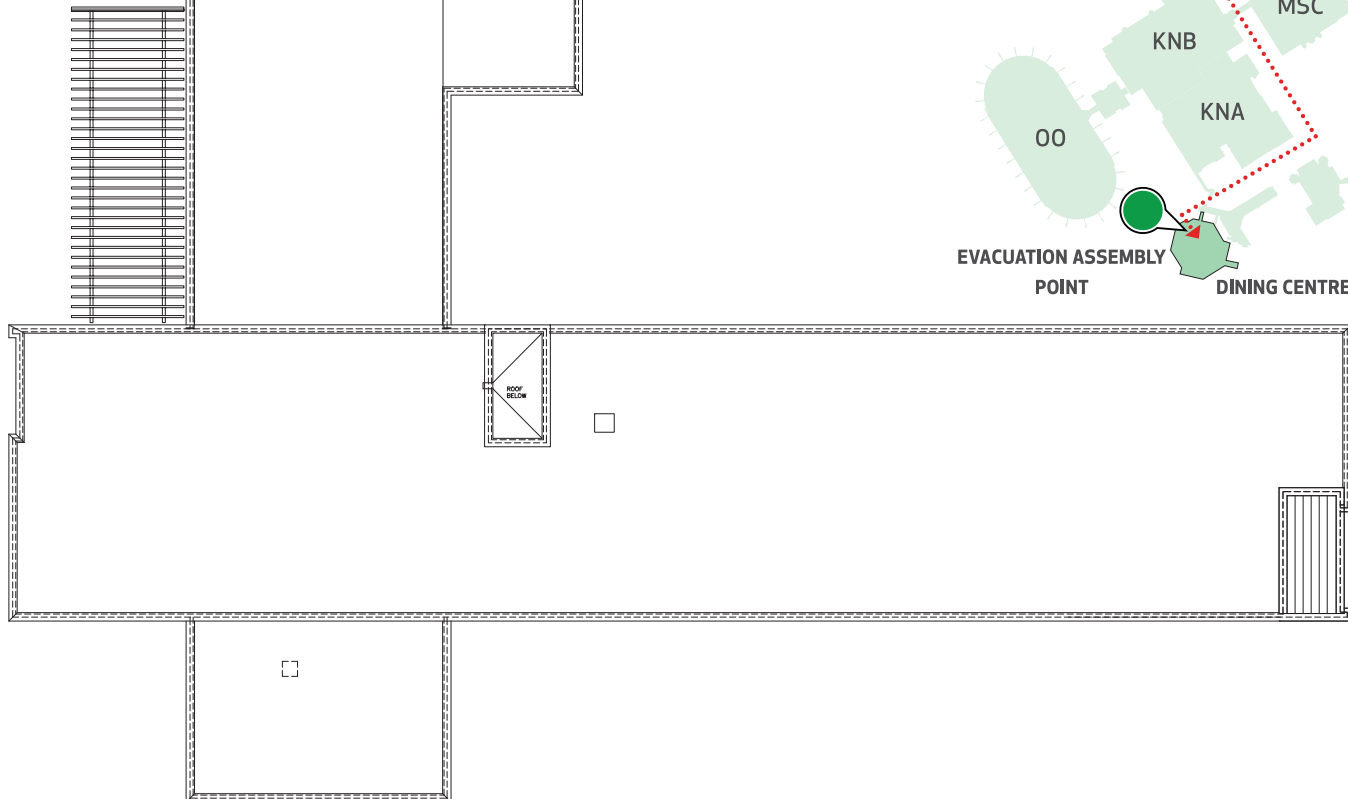
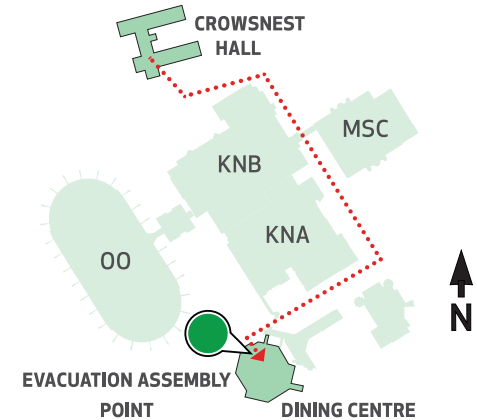
- Activate the nearest fire alarm pull station located long exit path.
- Evacuate building through the nearest exit. Use stairs, do not use elevators.
- Take coat and keys only if immediately available.
- Close doors behind you along your exit route.
- Move away from the building.
- Proceed to the Assembly Point.

## Assembly Point

Primary:  
Dining Centre

**Campus Security**  
**403-220-5333**

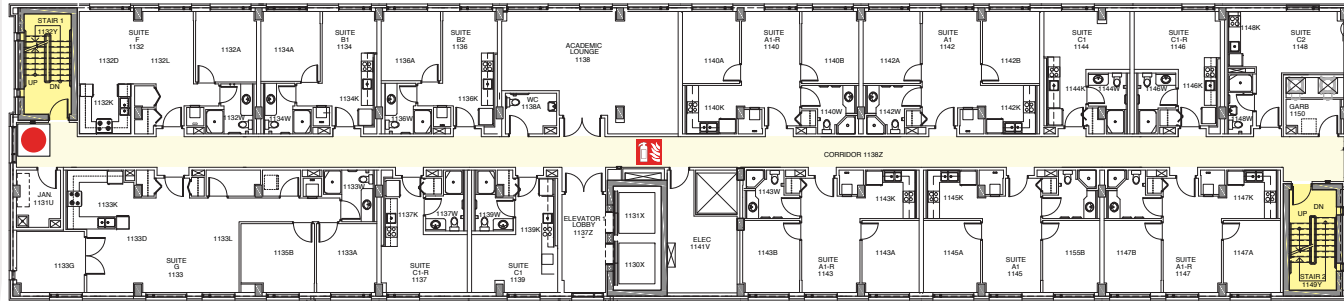
Report emergencies from a safe location.



# Emergency Evacuation Map Crowsnest Hall - Floor Eleven

Legend	
	You Are Here
	Fire Extinguisher
	Pull Station
	Defibrillator
	Fire Phone
	Sprinkler Shut Off

**EXIT**



**EXIT**

## Evacuation Procedures

- Activate the nearest fire alarm pull station located long exit path.
- Evacuate building through the nearest exit. Use stairs, do not use elevators.
- Take coat and keys only if immediately available.
- Close doors behind you along your exit route.
- Move away from the building.
- Proceed to the Assembly Point.

## Assembly Point

Primary:  
Dining Centre

**Campus Security**  
**403-220-5333**

Report emergencies from a safe location.

