



Emergency Evacuation Procedures

- A. Activate the **NEAREST FIRE ALARM PULL STATION**, located along exit path.
- B. Take coat and keys if immediately available.
- C. Evacuate building through the nearest exit. Use stairs - **DO NOT USE ELEVATORS.**
- D. Close all doors along your exit route.
- E. If directed by wardens, follow their instructions.
- F. Move away from the building and proceed to the Assembly Point.

If you have information regarding the emergency call **Campus Security** at **403-220-5333** from a safe location.

Legend

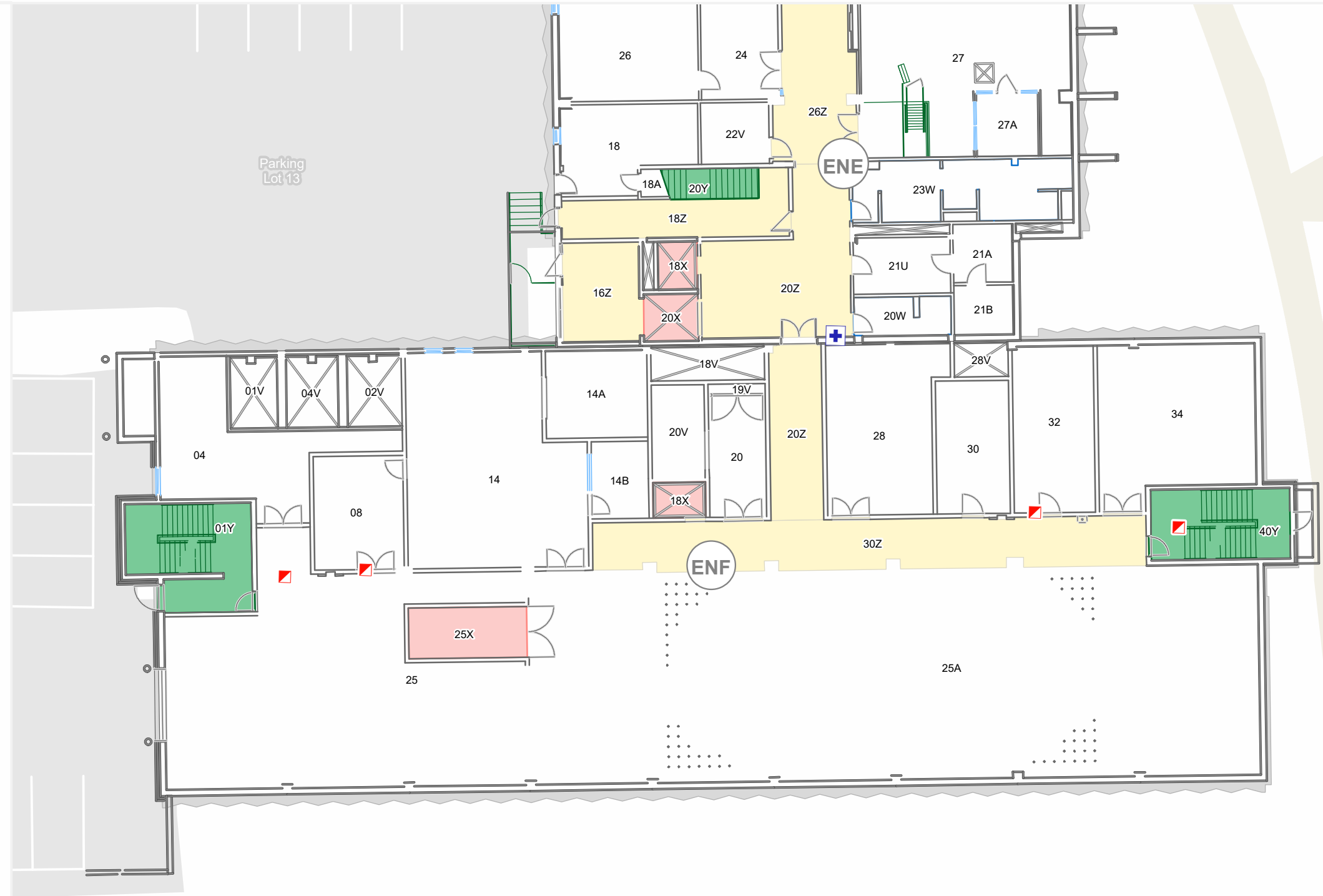
-  Pull Stations
-  AEDs

Assembly Point:

MSC - North Courtyard



 Current Building  Assembly Building



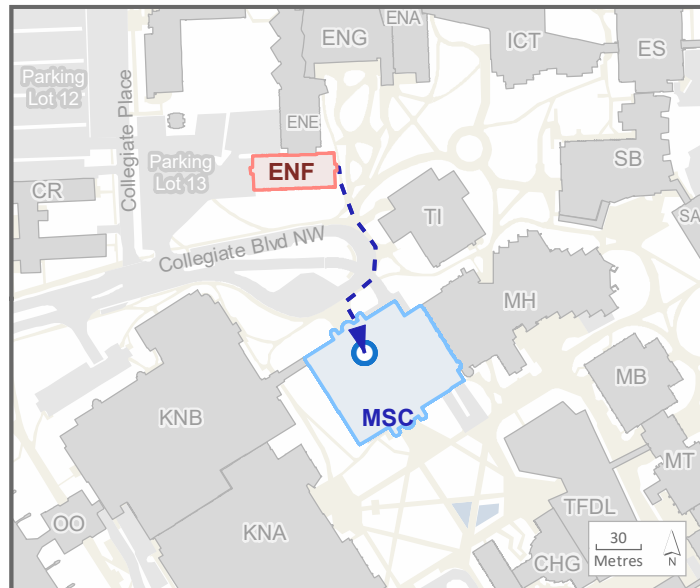
Emergency Evacuation Procedures

- A. Activate the **NEAREST FIRE ALARM PULL STATION**, located along exit path.
- B. Take coat and keys if immediately available.
- C. Evacuate building through the nearest exit. Use stairs - **DO NOT USE ELEVATORS.**
- D. Close all doors along your exit route.
- E. If directed by wardens, follow their instructions.
- F. Move away from the building and proceed to the Assembly Point.

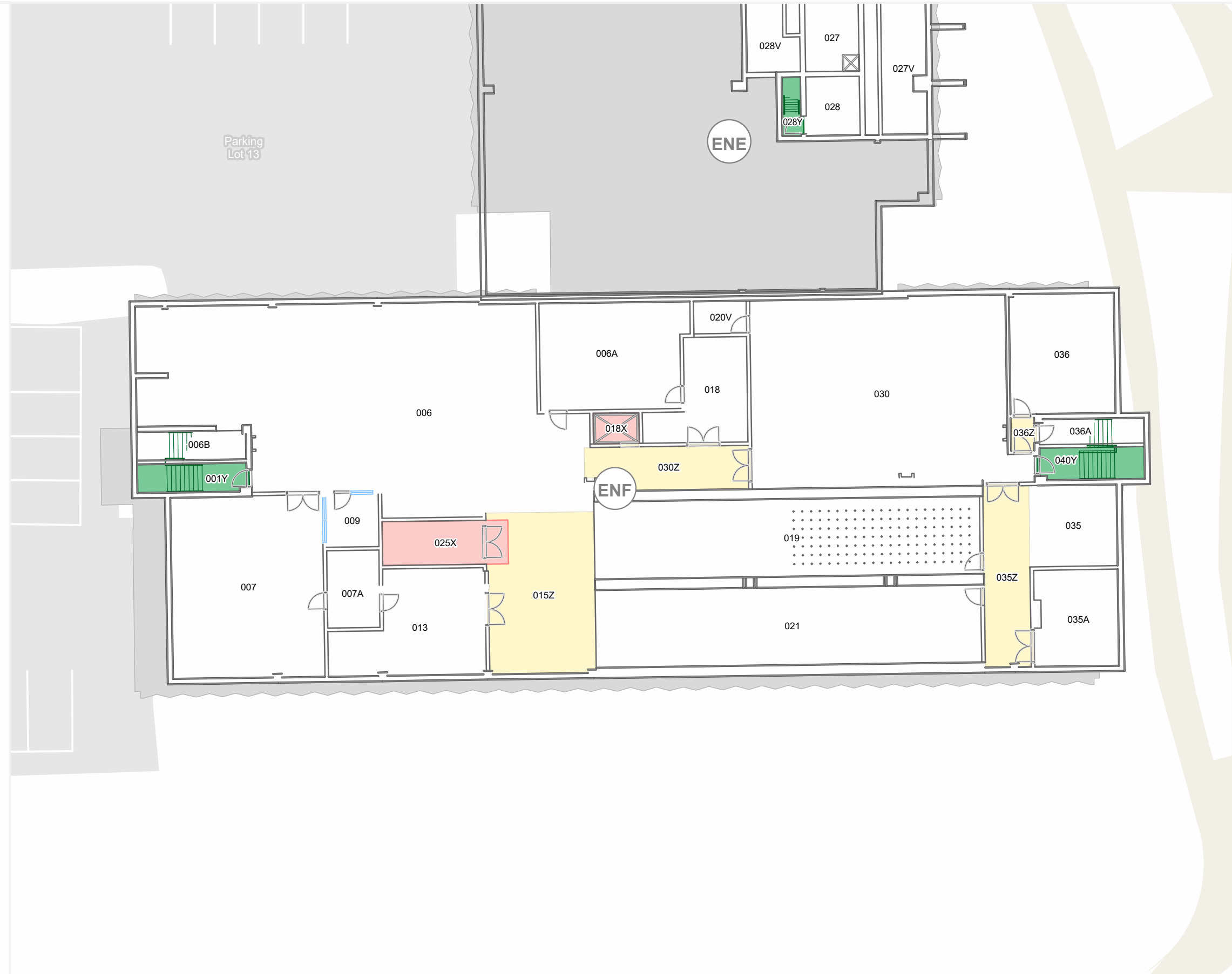
If you have information regarding the emergency call **Campus Security** at **403-220-5333** from a safe location.

Legend

Assembly Point:
MSC - North Courtyard



Current Building Assembly Building



Emergency Evacuation Procedures

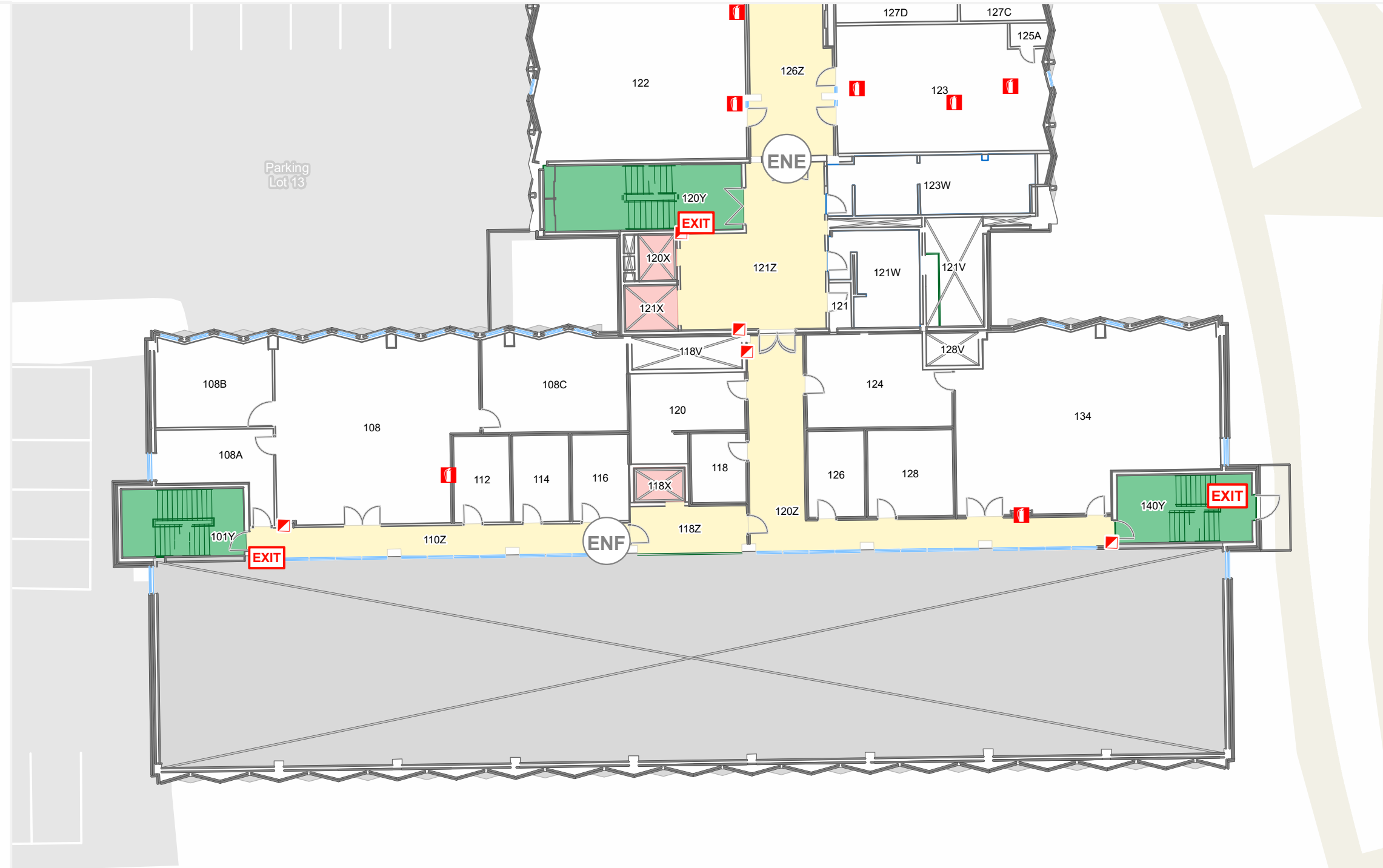
- A. Activate the **NEAREST FIRE ALARM PULL STATION**, located along exit path.
 - B. Take coat and keys if immediately available.
 - C. Evacuate building through the nearest exit. Use stairs - **DO NOT USE ELEVATORS.**
 - D. Close all doors along your exit route.
 - E. If directed by wardens, follow their instructions.
 - F. Move away from the building and proceed to the Assembly Point.
- If you have information regarding the emergency call **Campus Security** at **403-220-5333** from a safe location.



Assembly Point:
MSC - North Courtyard



Current Building Assembly Building



Emergency Evacuation Procedures

- A. Activate the **NEAREST FIRE ALARM PULL STATION**, located along exit path.
- B. Take coat and keys if immediately available.
- C. Evacuate building through the nearest exit. Use stairs - **DO NOT USE ELEVATORS.**
- D. Close all doors along your exit route.
- E. If directed by wardens, follow their instructions.
- F. Move away from the building and proceed to the Assembly Point.

If you have information regarding the emergency call **Campus Security** at **403-220-5333** from a safe location.

Legend

■ Pull Stations

Assembly Point:

MSC - North Courtyard



■ Current Building ■ Assembly Building

