




Engineering Block E - Basement

Emergency Evacuation Procedures

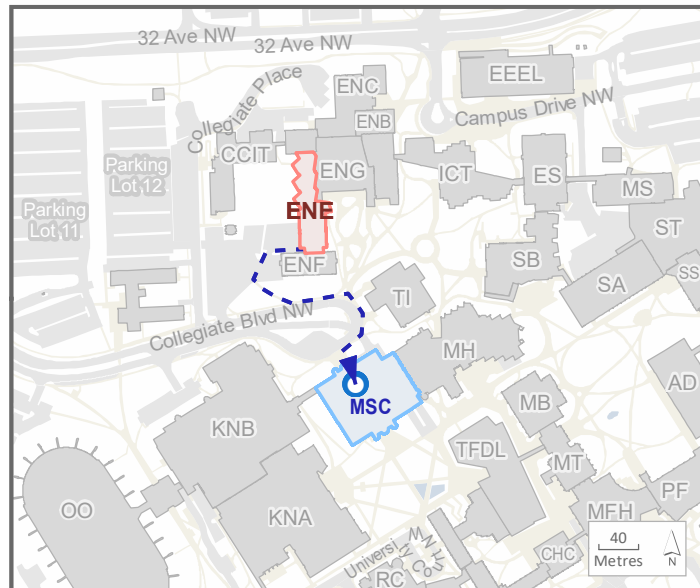
- A. Activate the **NEAREST FIRE ALARM PULL STATION**, located along exit path.
- B. Take coat and keys if immediately available.
- C. Evacuate building through the nearest exit. Use stairs - **DO NOT USE ELEVATORS**.
- D. Close all doors along your exit route.
- E. If directed by wardens, follow their instructions.
- F. Move away from the building and proceed to the Assembly Point.

If you have information regarding the emergency call **Campus Security** at **403-220-5333** from a safe location.

Legend

-  Fire Extinguishers
-  Pull Stations
-  AEDs

Assembly Point: MSC - North Courtyard



-  Current Building
-  Assembly Building



Emergency Evacuation Procedures

- A. Activate the **NEAREST FIRE ALARM PULL STATION**, located along exit path.
- B. Take coat and keys if immediately available.
- C. Evacuate building through the nearest exit. Use stairs - **DO NOT USE ELEVATORS**.
- D. Close all doors along your exit route.
- E. If directed by wardens, follow their instructions.
- F. Move away from the building and proceed to the Assembly Point.

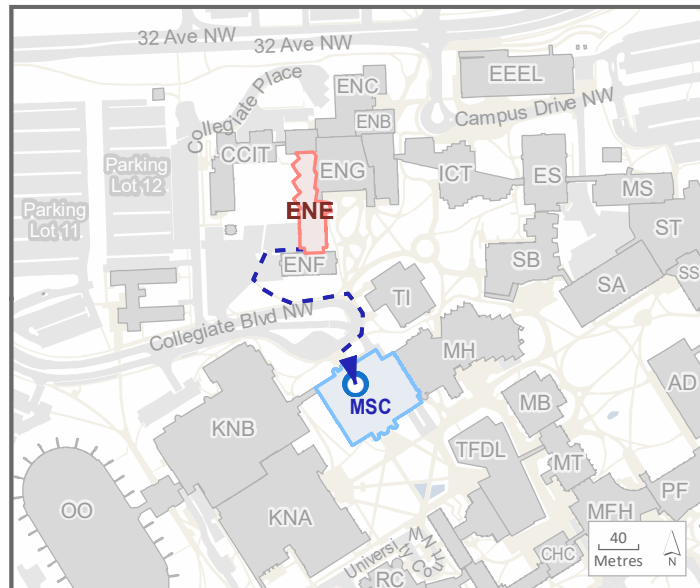
If you have information regarding the emergency call **Campus Security** at **403-220-5333** from a safe location.

Legend

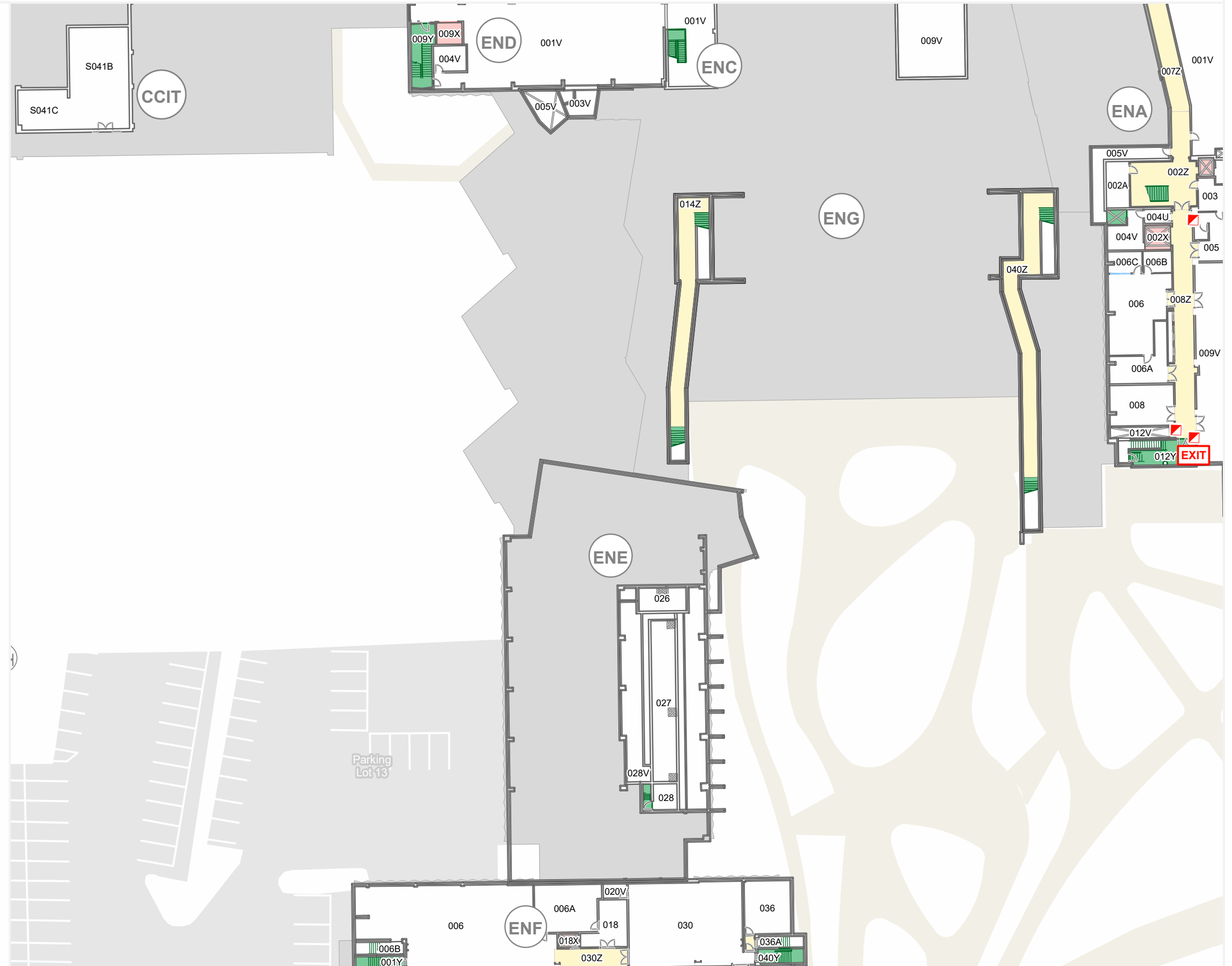
■ Pull Stations

Assembly Point:

MSC - North Courtyard



■ Current Building ■ Assembly Building



Engineering Block E - Basement

Emergency Evacuation Procedures

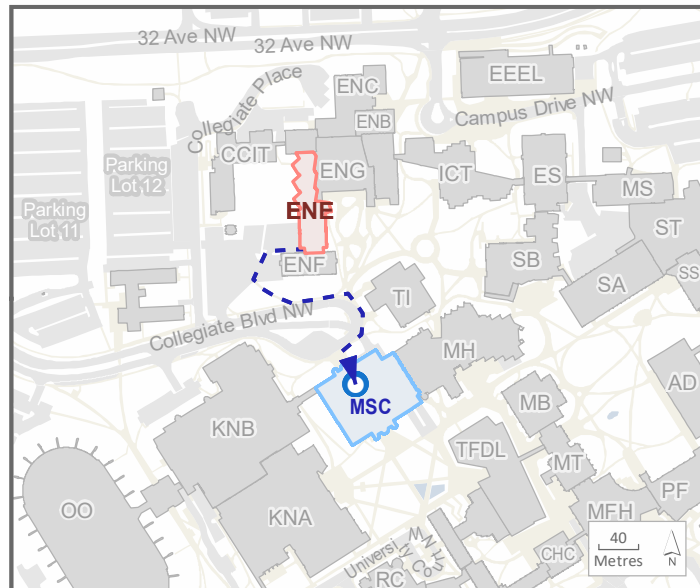
- Activate the **NEAREST FIRE ALARM PULL STATION**, located along exit path.
- Take coat and keys if immediately available.
- Evacuate building through the nearest exit. Use stairs - **DO NOT USE ELEVATORS**.
- Close all doors along your exit route.
- If directed by wardens, follow their instructions.
- Move away from the building and proceed to the Assembly Point.

If you have information regarding the emergency call **Campus Security** at **403-220-5333** from a safe location.

Legend

- You Are Here
- Pull Stations
- Fire Extinguishers
- AEDs

Assembly Point: MSC - North Courtyard



Current Building Assembly Building



Engineering Block E - Basement

Emergency Evacuation Procedures

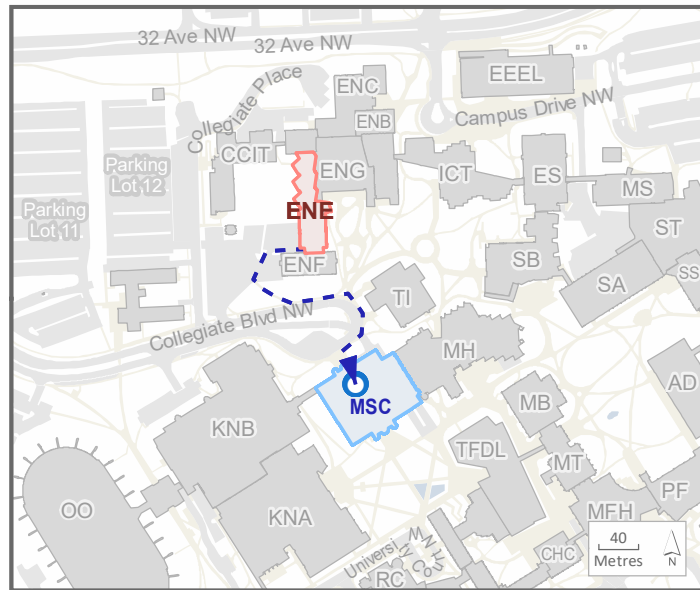
- A. Activate the **NEAREST FIRE ALARM PULL STATION**, located along exit path.
- B. Take coat and keys if immediately available.
- C. Evacuate building through the nearest exit. Use stairs - **DO NOT USE ELEVATORS**.
- D. Close all doors along your exit route.
- E. If directed by wardens, follow their instructions.
- F. Move away from the building and proceed to the Assembly Point.

If you have information regarding the emergency call **Campus Security** at **403-220-5333** from a safe location.

Legend

- You Are Here
- Pull Stations
- Fire Extinguishers
- AEDs

Assembly Point: MSC - North Courtyard



Current Building Assembly Building



Engineering Block E - First Floor

Emergency Evacuation Procedures

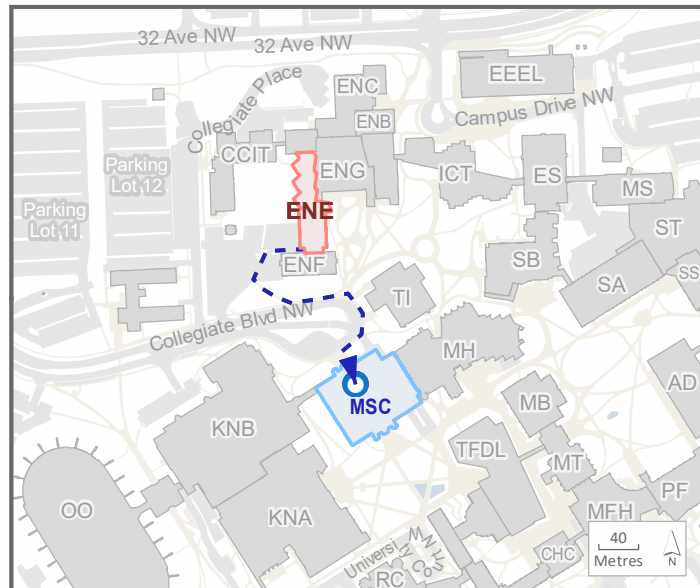
- A. Activate the **NEAREST FIRE ALARM PULL STATION**, located along exit path.
- B. Take coat and keys if immediately available.
- C. Evacuate building through the nearest exit. Use stairs - **DO NOT USE ELEVATORS**.
- D. Close all doors along your exit route.
- E. If directed by wardens, follow their instructions.
- F. Move away from the building and proceed to the Assembly Point.

If you have information regarding the emergency call **Campus Security** at **403-220-5333** from a safe location.

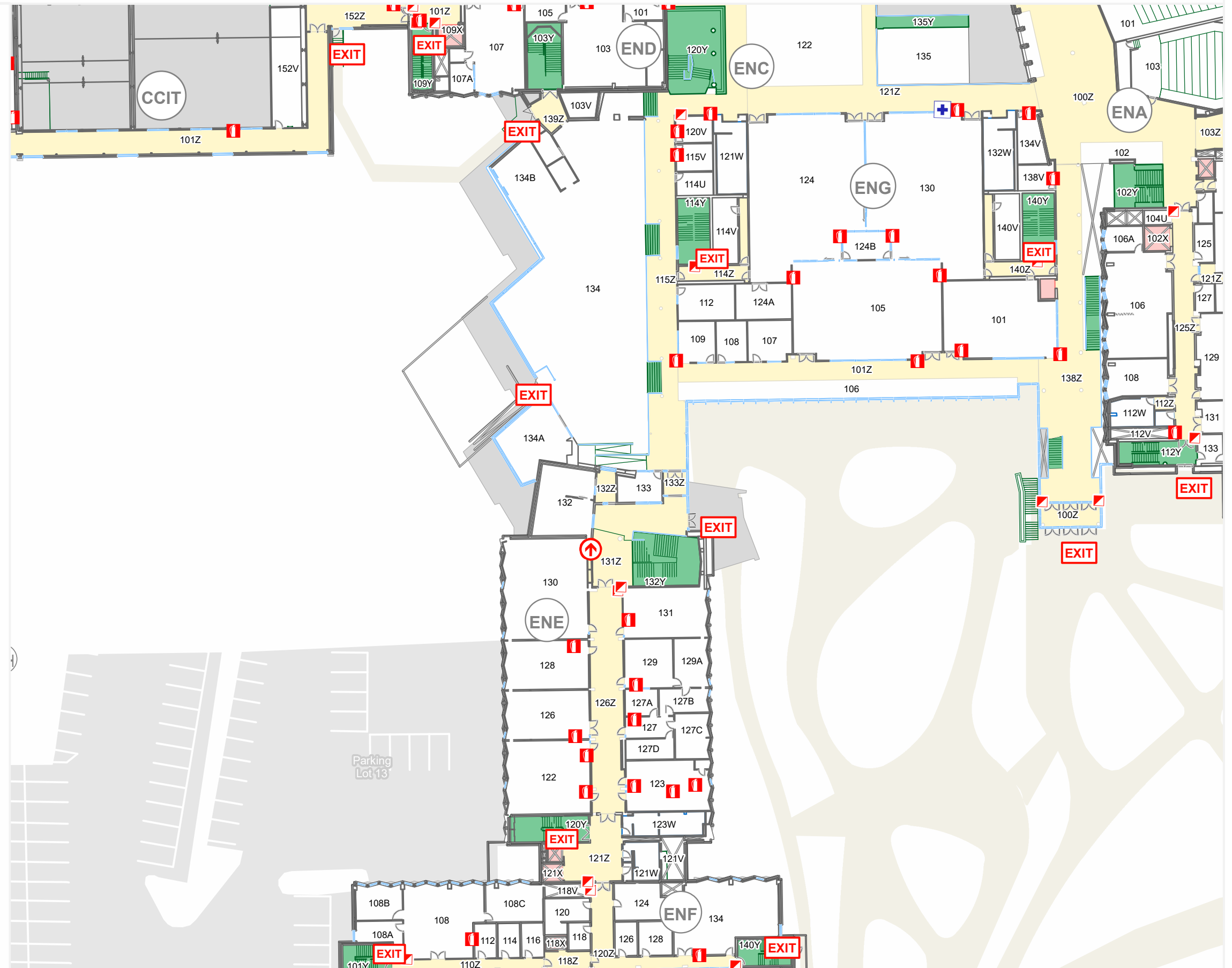
Legend

- You Are Here
- Pull Stations
- Fire Extinguishers
- AEDs

Assembly Point: MSC - North Courtyard



Current Building Assembly Building







Engineering Block E - First Floor

Emergency Evacuation Procedures

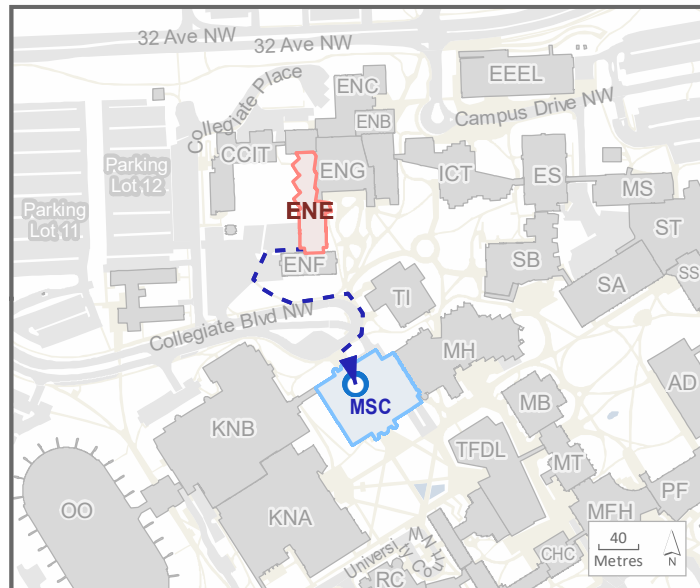
- A. Activate the **NEAREST FIRE ALARM PULL STATION**, located along exit path.
- B. Take coat and keys if immediately available.
- C. Evacuate building through the nearest exit. Use stairs - **DO NOT USE ELEVATORS**.
- D. Close all doors along your exit route.
- E. If directed by wardens, follow their instructions.
- F. Move away from the building and proceed to the Assembly Point.

If you have information regarding the emergency call **Campus Security** at **403-220-5333** from a safe location.

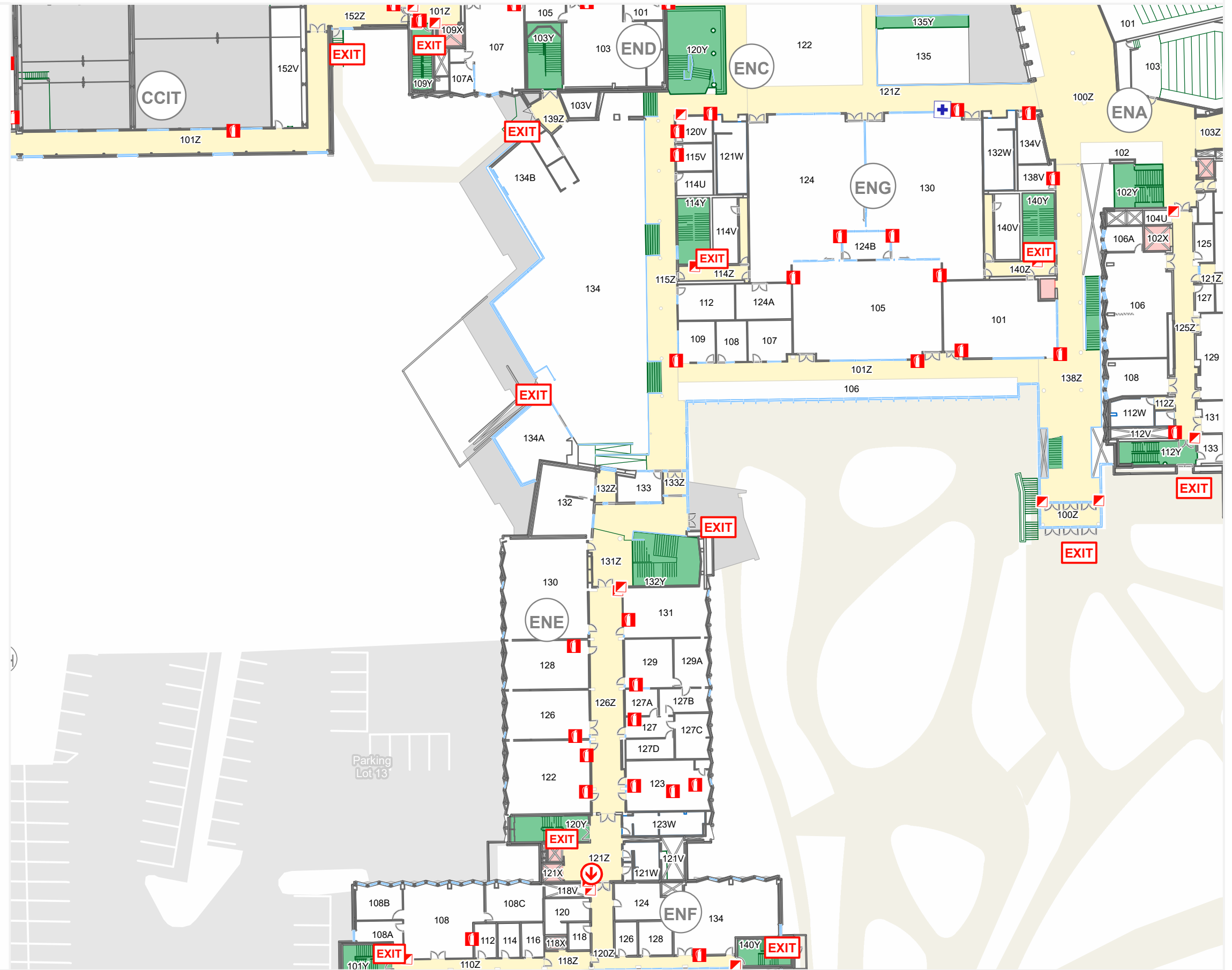
Legend

-  You Are Here
-  Pull Stations
-  Fire Extinguishers
-  AEDs

Assembly Point: MSC - North Courtyard



 Current Building  Assembly Building



Engineering Block E - First Floor

Emergency Evacuation Procedures

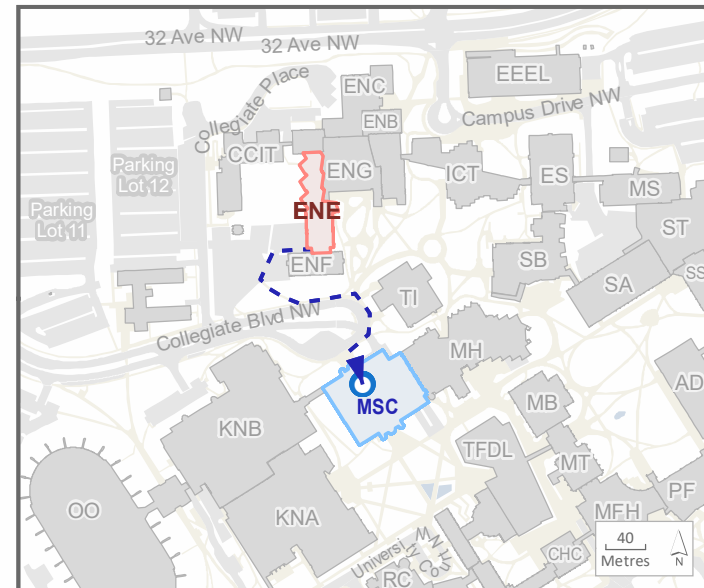
- A. Activate the **NEAREST FIRE ALARM PULL STATION**, located along exit path.
- B. Take coat and keys if immediately available.
- C. Evacuate building through the nearest exit. Use stairs - **DO NOT USE ELEVATORS**.
- D. Close all doors along your exit route.
- E. If directed by wardens, follow their instructions.
- F. Move away from the building and proceed to the Assembly Point.

If you have information regarding the emergency call **Campus Security** at **403-220-5333** from a safe location.

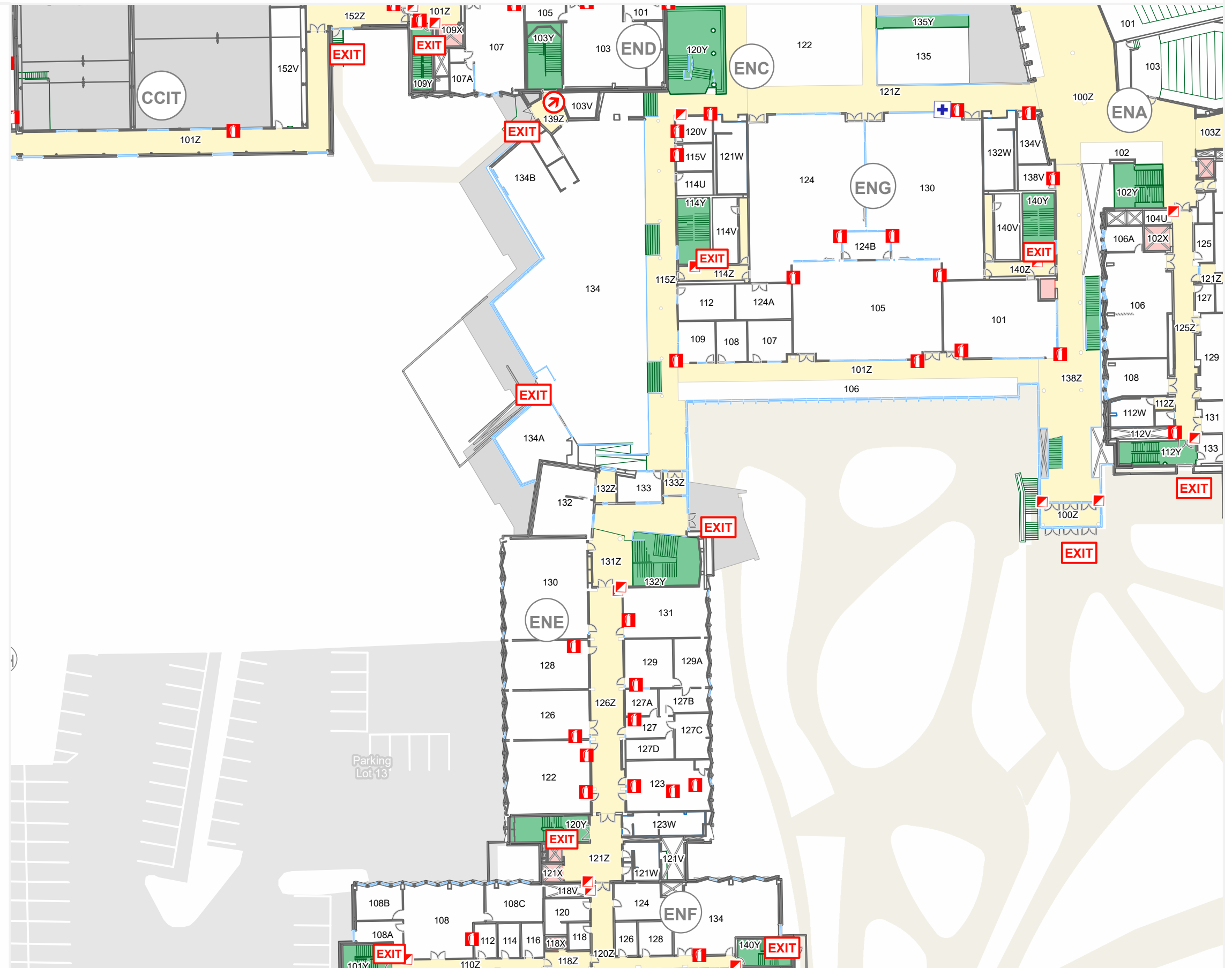
Legend

- You Are Here
- Pull Stations
- Fire Extinguishers
- AEDs

Assembly Point: MSC - North Courtyard



Current Building Assembly Building



Engineering Block E - First Floor

Emergency Evacuation Procedures

- A. Activate the **NEAREST FIRE ALARM PULL STATION**, located along exit path.
- B. Take coat and keys if immediately available.
- C. Evacuate building through the nearest exit. Use stairs - **DO NOT USE ELEVATORS**.
- D. Close all doors along your exit route.
- E. If directed by wardens, follow their instructions.
- F. Move away from the building and proceed to the Assembly Point.

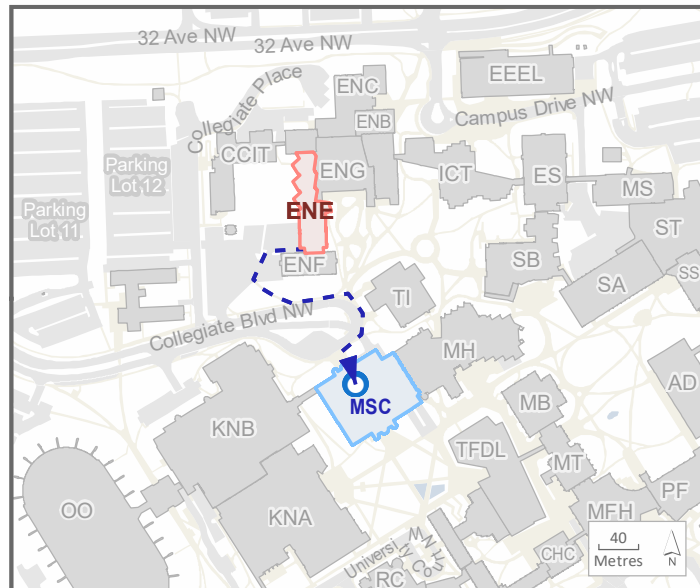
If you have information regarding the emergency call **Campus Security** at **403-220-5333** from a safe location.

Legend

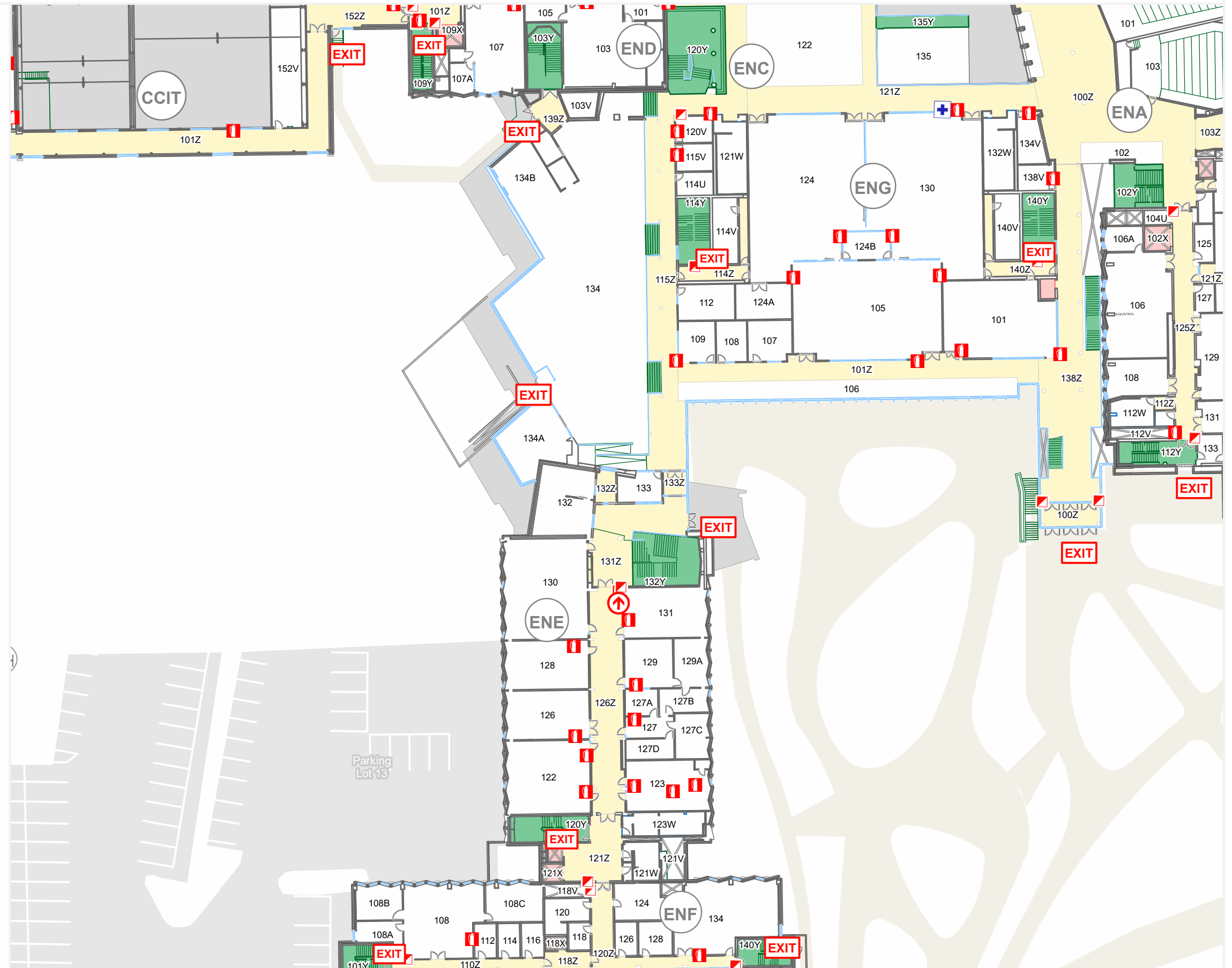
- You Are Here
- Pull Stations
- Fire Extinguishers
- AEDs

Assembly Point:

MSC - North Courtyard



Current Building Assembly Building



Engineering Block E - First Floor

Emergency Evacuation Procedures

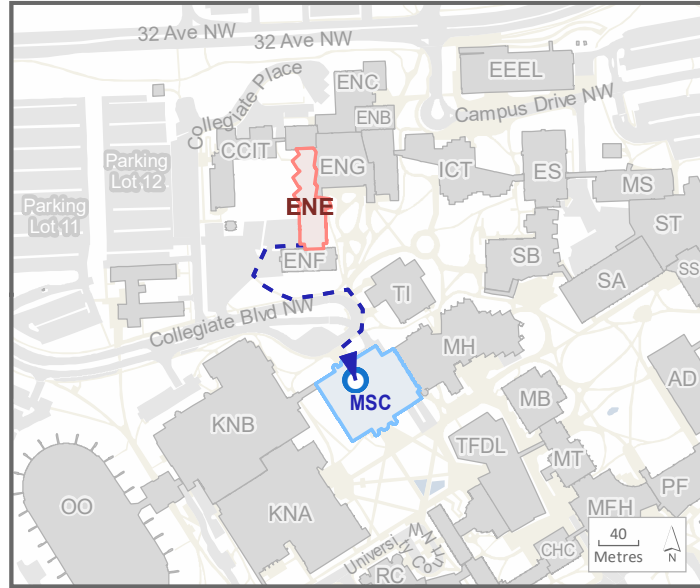
- A. Activate the **NEAREST FIRE ALARM PULL STATION**, located along exit path.
- B. Take coat and keys if immediately available.
- C. Evacuate building through the nearest exit. Use stairs - **DO NOT USE ELEVATORS**.
- D. Close all doors along your exit route.
- E. If directed by wardens, follow their instructions.
- F. Move away from the building and proceed to the Assembly Point.

If you have information regarding the emergency call **Campus Security** at **403-220-5333** from a safe location.

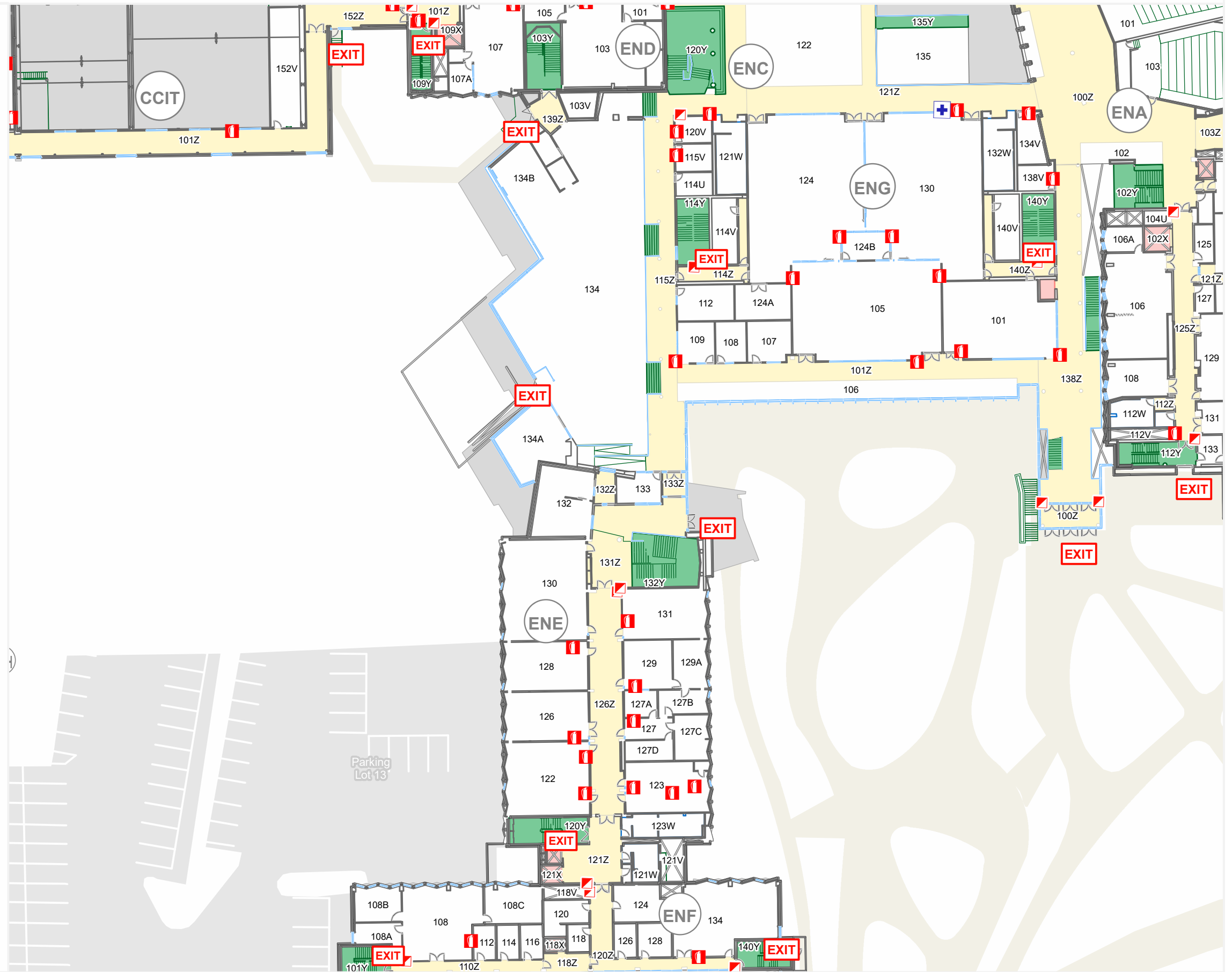
Legend

- Fire Extinguishers
- Pull Stations
- AEDs

Assembly Point: MSC - North Courtyard



Current Building Assembly Building



Engineering Block E - Second Floor

Emergency Evacuation Procedures

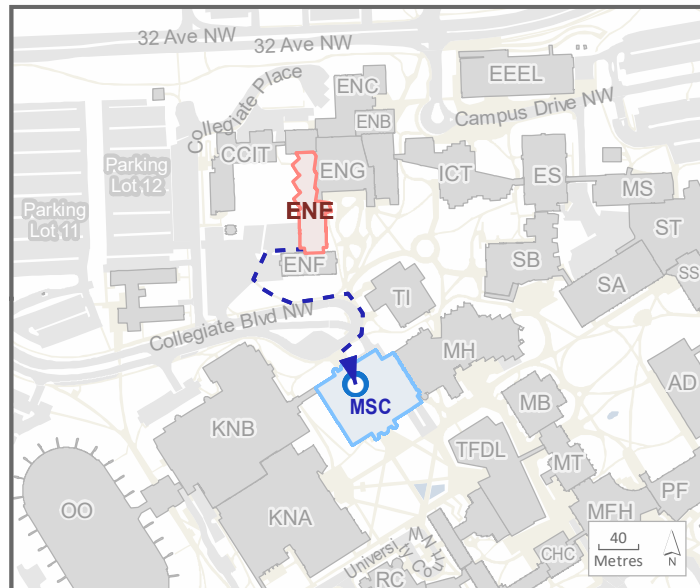
- A. Activate the **NEAREST FIRE ALARM PULL STATION**, located along exit path.
- B. Take coat and keys if immediately available.
- C. Evacuate building through the nearest exit. Use stairs - **DO NOT USE ELEVATORS**.
- D. Close all doors along your exit route.
- E. If directed by wardens, follow their instructions.
- F. Move away from the building and proceed to the Assembly Point.

If you have information regarding the emergency call **Campus Security** at **403-220-5333** from a safe location.

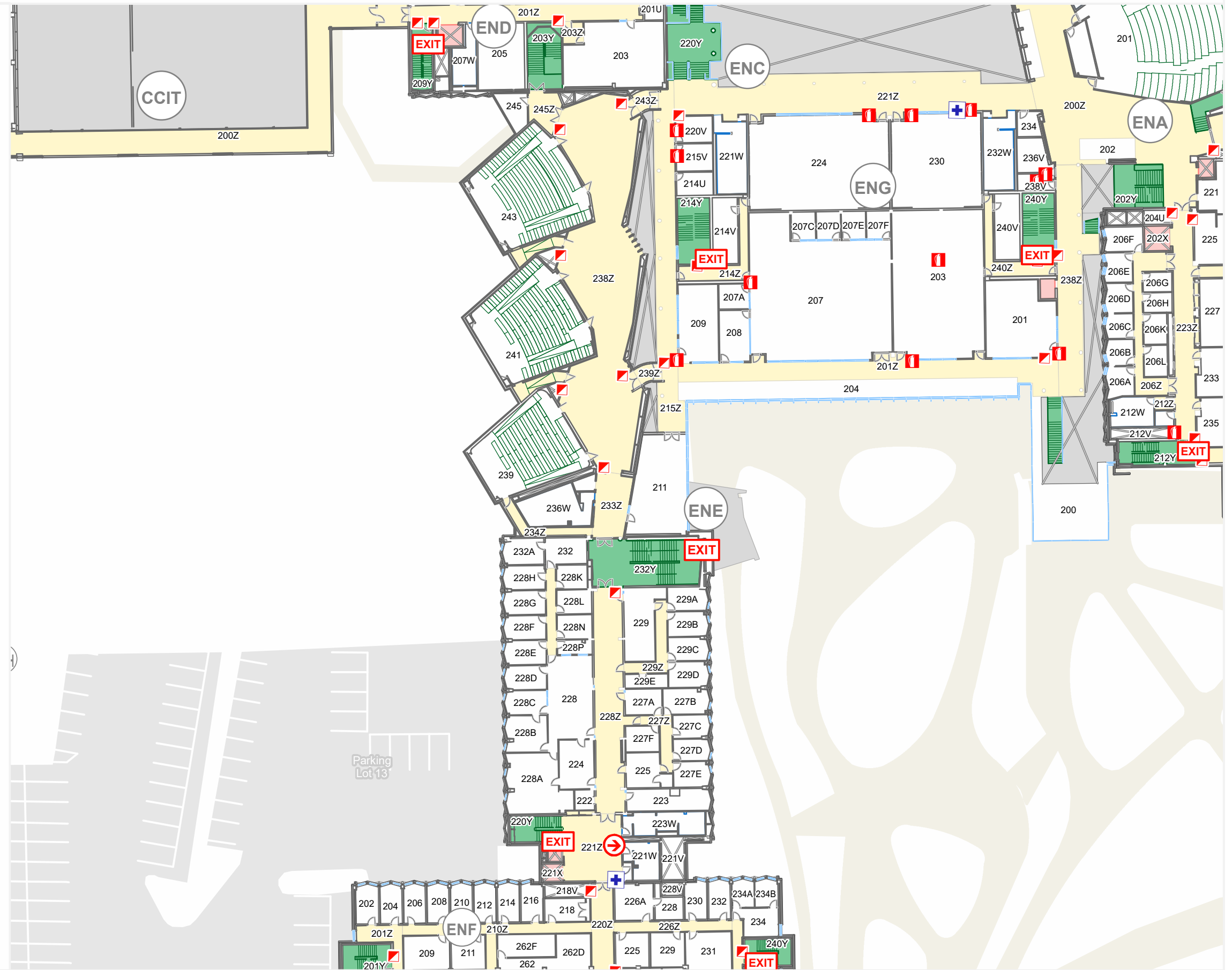
Legend

- You Are Here
- Pull Stations
- Fire Extinguishers
- AEDs

Assembly Point: MSC - North Courtyard



Current Building Assembly Building



Engineering Block E - Second Floor

Emergency Evacuation Procedures

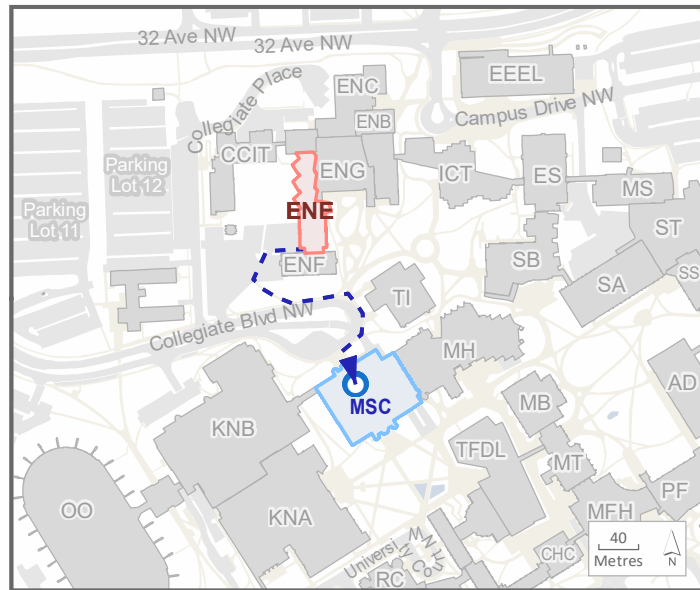
- A. Activate the **NEAREST FIRE ALARM PULL STATION**, located along exit path.
- B. Take coat and keys if immediately available.
- C. Evacuate building through the nearest exit. Use stairs - **DO NOT USE ELEVATORS**.
- D. Close all doors along your exit route.
- E. If directed by wardens, follow their instructions.
- F. Move away from the building and proceed to the Assembly Point.

If you have information regarding the emergency call **Campus Security** at **403-220-5333** from a safe location.

Legend

- You Are Here
- Pull Stations
- Fire Extinguishers
- AEDs

Assembly Point: MSC - North Courtyard



Current Building Assembly Building



Engineering Block E - Second Floor

Emergency Evacuation Procedures

- Activate the **NEAREST FIRE ALARM PULL STATION**, located along exit path.
- Take coat and keys if immediately available.
- Evacuate building through the nearest exit. Use stairs - **DO NOT USE ELEVATORS**.
- Close all doors along your exit route.
- If directed by wardens, follow their instructions.
- Move away from the building and proceed to the Assembly Point.

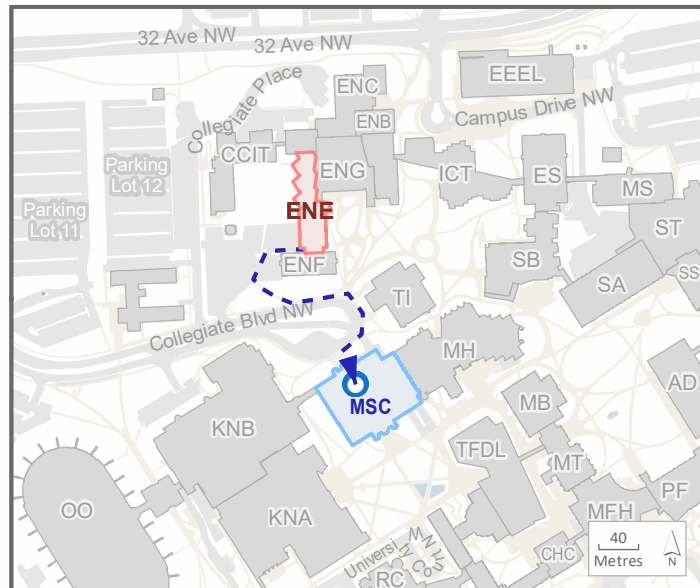
If you have information regarding the emergency call **Campus Security** at **403-220-5333** from a safe location.

Legend

- You Are Here
- Pull Stations
- Fire Extinguishers
- AEDs

Assembly Point:

MSC - North Courtyard



Current Building Assembly Building



Emergency Evacuation Procedures

- A. Activate the **NEAREST FIRE ALARM PULL STATION**, located along exit path.
- B. Take coat and keys if immediately available.
- C. Evacuate building through the nearest exit. Use stairs - **DO NOT USE ELEVATORS**.
- D. Close all doors along your exit route.
- E. If directed by wardens, follow their instructions.
- F. Move away from the building and proceed to the Assembly Point.

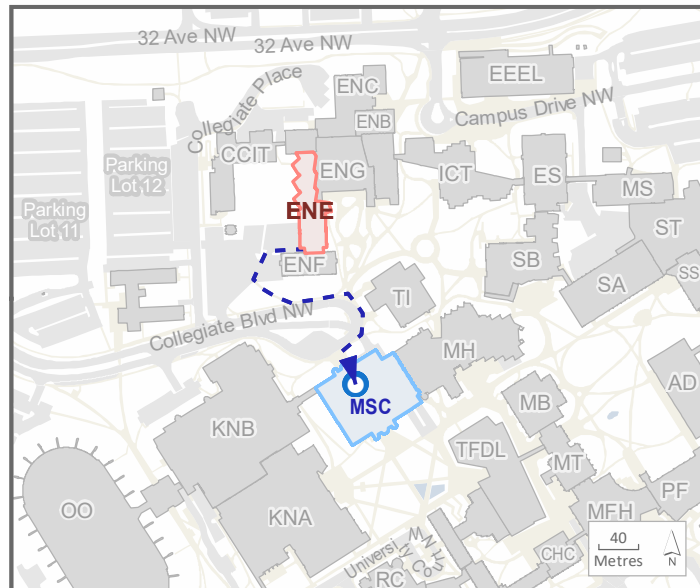
If you have information regarding the emergency call **Campus Security** at **403-220-5333** from a safe location.

Legend

- You Are Here
- Pull Stations
- Fire Extinguishers
- AEDs

Assembly Point:

MSC - North Courtyard



Current Building Assembly Building



Emergency Evacuation Procedures

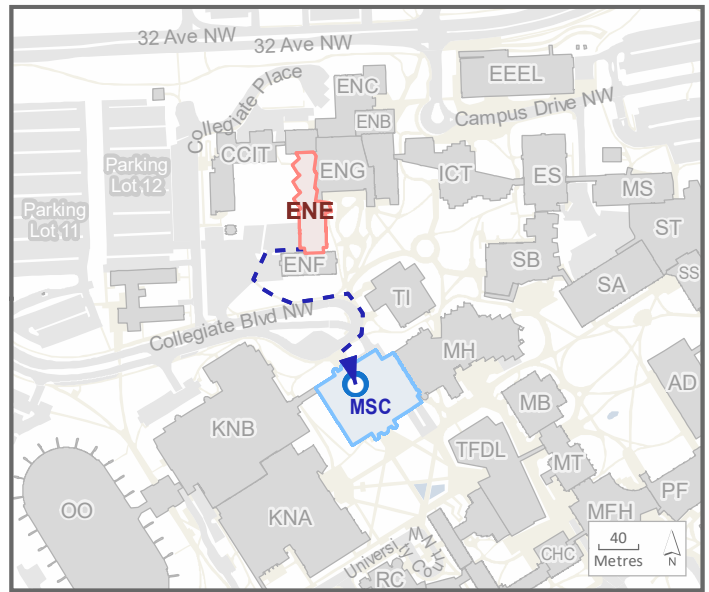
- A. Activate the **NEAREST FIRE ALARM PULL STATION**, located along exit path.
- B. Take coat and keys if immediately available.
- C. Evacuate building through the nearest exit. Use stairs - **DO NOT USE ELEVATORS**.
- D. Close all doors along your exit route.
- E. If directed by wardens, follow their instructions.
- F. Move away from the building and proceed to the Assembly Point.

If you have information regarding the emergency call **Campus Security** at **403-220-5333** from a safe location.

Legend

- Fire Extinguishers
- Pull Stations
- AEDs

Assembly Point:
MSC - North Courtyard



Current Building Assembly Building







Emergency Evacuation Procedures

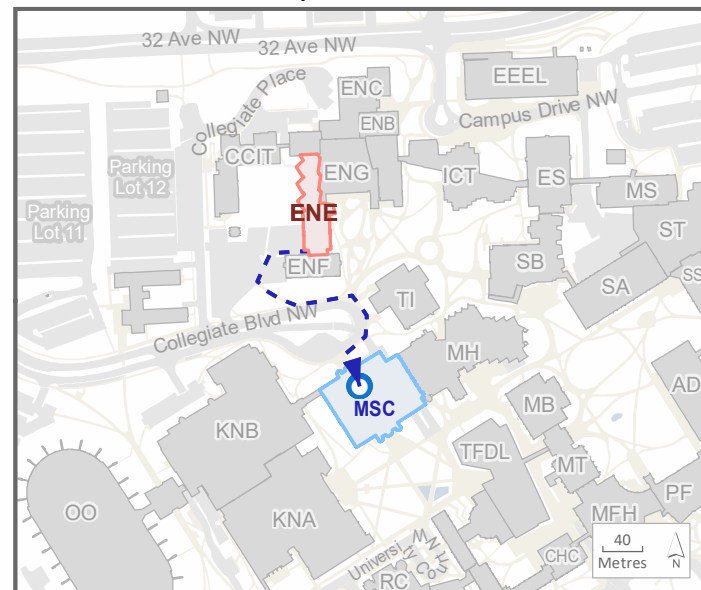
- A. Activate the **NEAREST FIRE ALARM PULL STATION**, located along exit path.
- B. Take coat and keys if immediately available.
- C. Evacuate building through the nearest exit. Use stairs - **DO NOT USE ELEVATORS**.
- D. Close all doors along your exit route.
- E. If directed by wardens, follow their instructions.
- F. Move away from the building and proceed to the Assembly Point.

If you have information regarding the emergency call **Campus Security** at **403-220-5333** from a safe location.

Legend

-  You Are Here
-  Pull Stations
-  Fire Extinguishers
-  AEDs

Assembly Point: MSC - North Courtyard



 Current Building  Assembly Building



Emergency Evacuation Procedures

- A. Activate the **NEAREST FIRE ALARM PULL STATION**, located along exit path.
- B. Take coat and keys if immediately available.
- C. Evacuate building through the nearest exit. Use stairs - **DO NOT USE ELEVATORS**.
- D. Close all doors along your exit route.
- E. If directed by wardens, follow their instructions.
- F. Move away from the building and proceed to the Assembly Point.

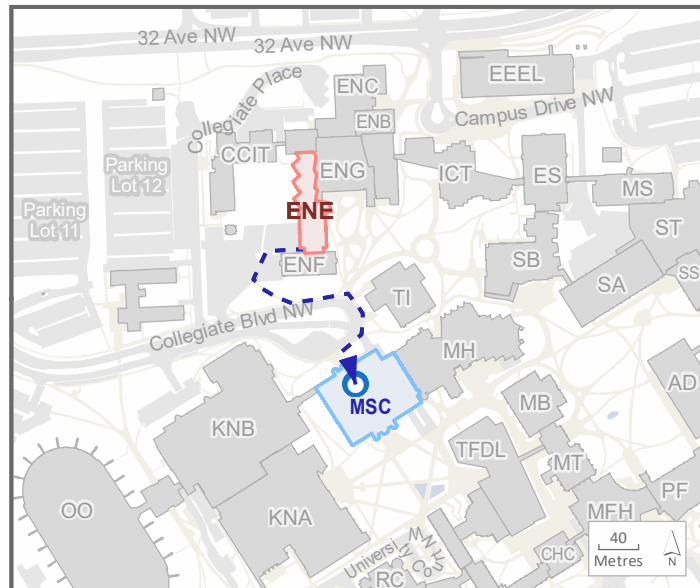
If you have information regarding the emergency call **Campus Security** at **403-220-5333** from a safe location.

Legend

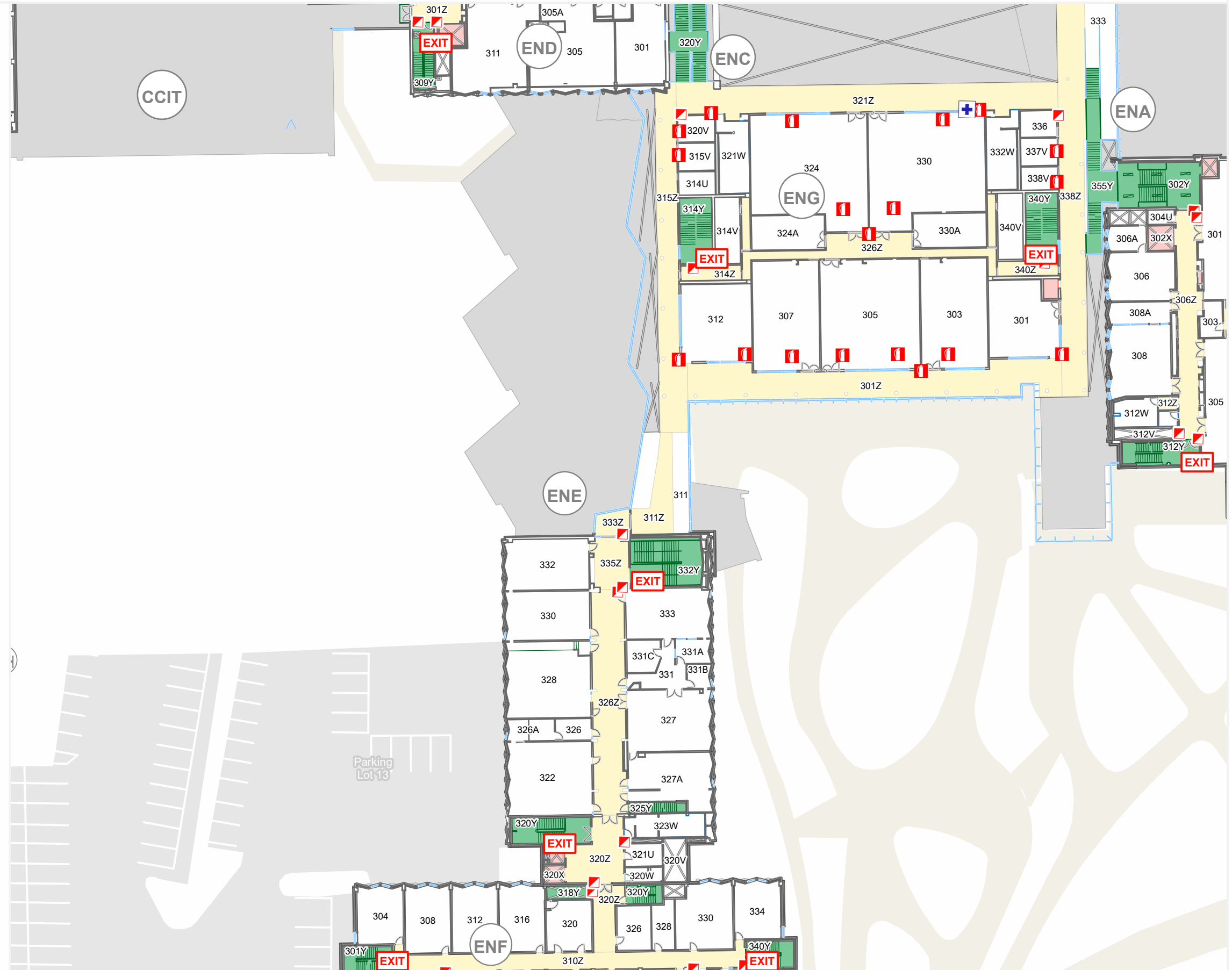
- Fire Extinguishers
- Pull Stations
- AEDs

Assembly Point:

MSC - North Courtyard



Current Building Assembly Building



Emergency Evacuation Procedures

- A. Activate the **NEAREST FIRE ALARM PULL STATION**, located along exit path.
- B. Take coat and keys if immediately available.
- C. Evacuate building through the nearest exit. Use stairs - **DO NOT USE ELEVATORS.**
- D. Close all doors along your exit route.
- E. If directed by wardens, follow their instructions.
- F. Move away from the building and proceed to the Assembly Point.

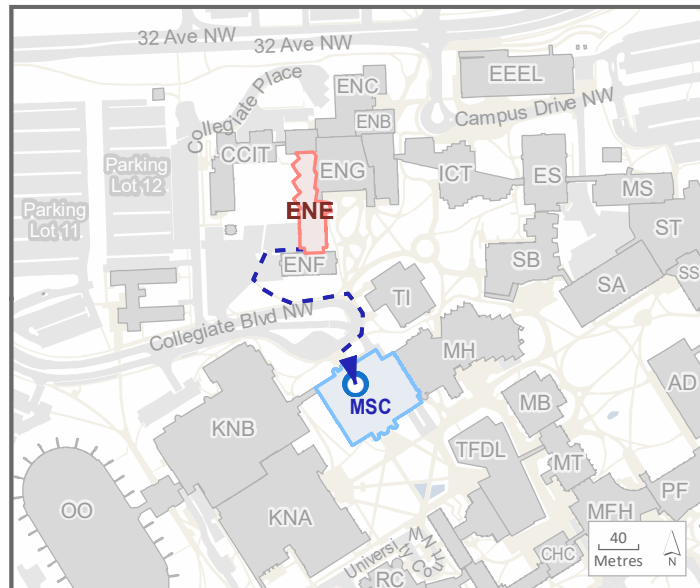
If you have information regarding the emergency call **Campus Security** at **403-220-5333** from a safe location.

Legend

- Pull Stations

Assembly Point:

MSC - North Courtyard



- Current Building
- Assembly Building

